

TRB-1 (m): 293T Lysate: sc-124268

BACKGROUND

The phosphorylation and dephosphorylation of proteins on serine and threonine residues is an essential means of regulating a broad range of cellular functions in eukaryotes, including cell division, homeostasis and apoptosis. A group of proteins that are intimately involved in this process are the serine/threonine (Ser/Thr) protein kinases. TRB-1 (tribbles homolog 1), also known as C8FW, GIG2 or TRB1, is a 372 amino acid protein that contains one protein kinase domain and belongs to the Ser/Thr protein kinase superfamily. Expressed ubiquitously with highest expression in bone marrow, thyroid gland, skeletal muscle and pancreas, TRB-1 interacts with MAPK kinases and is thought to regulate the activation of MAP kinases, possibly controlling MAP kinase cascades. The gene encoding TRB-1 maps to human chromosome 8, which consists of nearly 146 million base pairs, houses more than 800 genes and is associated with a variety of diseases and malignancies.

REFERENCES

1. Wilkin, F., et al. 1997. Characterization of a phosphoprotein whose mRNA is regulated by the mitogenic pathways in dog thyroid cells. *Eur. J. Biochem.* 248: 660-668.
2. Wu, M., et al. 2003. SINK is a p65-interacting negative regulator of NFκB-dependent transcription. *J. Biol. Chem.* 278: 27072-27079.
3. Storlazzi, C.T., et al. 2004. Identification of a commonly amplified 4.3 Mb region with overexpression of C8FW, but not MYC in MYC-containing double minutes in myeloid malignancies. *Hum. Mol. Genet.* 13: 1479-1485.
4. Kiss-Toth, E., et al. 2004. Human tribbles, a protein family controlling mitogen-activated protein kinase cascades. *J. Biol. Chem.* 279: 42703-42708.
5. Hegedus, Z., et al. 2006. Tribbles: novel regulators of cell function; evolutionary aspects. *Cell. Mol. Life Sci.* 63: 1632-1641.
6. Online Mendelian Inheritance in Man, OMIM™. 2006. Johns Hopkins University, Baltimore, MD. MIM Number: 609461. World Wide Web URL: <http://www.ncbi.nlm.nih.gov/omim/>

CHROMOSOMAL LOCATION

Genetic locus: Trib1 (mouse) mapping to 15 D1.

PRODUCT

TRB-1 (m): 293T Lysate represents a lysate of mouse TRB-1 transfected 293T cells and is provided as 100 µg protein in 200 µl SDS-PAGE buffer.

APPLICATIONS

TRB-1 (m): 293T Lysate is suitable as a Western Blotting positive control for mouse reactive TRB-1 antibodies. Recommended use: 10-20 µl per lane.

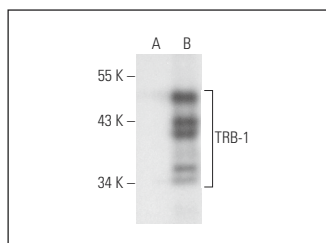
Control 293T Lysate: sc-117752 is available as a Western Blotting negative control lysate derived from non-transfected 293T cells.

TRB-1 (E-7): sc-393536 is recommended as a positive control antibody for Western Blot analysis of enhanced mouse TRB-1 expression in TRB-1 transfected 293T cells (starting dilution 1:100, dilution range 1:100-1:1,000).

RECOMMENDED SUPPORT REAGENTS

To ensure optimal results, the following support reagents are recommended:
 1) Western Blotting: use m-IgGκ BP-HRP: sc-516102 or m-IgGκ BP-HRP (Cruz Marker): sc-516102-CM (dilution range: 1:1000-1:10000), Cruz Marker™ Molecular Weight Standards: sc-2035, UltraCruz® Blocking Reagent: sc-516214 and Western Blotting Luminol Reagent: sc-2048.

DATA



TRB-1 (E-7): sc-393536. Western blot analysis of TRB-1 expression in non-transfected: sc-117752 (A) and mouse TRB-1 transfected: sc-124268 (B) 293T whole cell lysates.

STORAGE

Store at -20° C. Repeated freezing and thawing should be minimized. Sample vial should be boiled once prior to use. Non-hazardous. No MSDS required.

RESEARCH USE

For research use only, not for use in diagnostic procedures.

PROTOCOLS

See our web site at www.scbt.com for detailed protocols and support products.