

LI-cadherin (m): 293T Lysate: sc-125545

BACKGROUND

The cadherins are a family of Ca²⁺-dependent adhesion molecules that function to mediate cell-cell binding critical to the maintenance of tissue structure and morphogenesis. Cadherins each contain a large extracellular domain at the amino-terminus, which is characterized by a series of five homologous repeats, the most distal of which is thought to be responsible for binding specificity. The relatively short carboxy-terminal, intracellular domain interacts with a variety of cytoplasmic proteins, including β -catenin, to regulate cadherin function. LI-cadherin (for liver-intestine-cadherin) expression is restricted to liver and intestine tissues and is specifically localized to the basolateral domain of hepatocytes and enterocytes.

REFERENCES

1. Takeichi, M. 1988. The cadherins: cell-cell adhesion molecules controlling animal morphogenesis. *Development* 102: 639-655.
2. Hatta, M., Miyatani, S., Copeland, N.G., Gilbert, D.J., Jenkins, N.A. and Takeichi, M. 1991. Genomic organization and chromosomal mapping of the mouse P-cadherin gene. *Nucleic Acids Res.* 19: 4437-4441.
3. Koch, P.J. and Franke, W.W. 1994. Desmosomal cadherins: another growing multigene family of adhesion molecules. *Curr. Opin. Cell Biol.* 6: 682-687.
4. Ranscht, B. 1994. Cadherins and catenins: interactions and functions in embryonic development. *Curr. Opin. Cell Biol.* 6: 740-746.
5. Hinck, L., Nathke, I.S., Papkoff, J. and Nelson, W.J. 1994. Dynamics of cadherin/catenin complex formation: novel protein interactions and pathways of complex assembly. *J. Cell Biol.* 125: 1327-1340.
6. Berndorff, D., Gessner, R., Kreft, B., Schnoy, N., Lajours-Petter, A.M., Loch, N., Reutter, W., Hortsch, M. and Tauber, R. 1994. Liver-intestine cadherin: molecular cloning and characterization of a novel Ca²⁺-dependent cell adhesion molecule expressed in liver and intestine. *J. Cell Biol.* 125: 1353-1369.
7. Ayalon, O., Sabanai, H., Lampugnani, M.G., Dejana, E. and Geiger, B. 1994. Spatial and temporal relationships between cadherins and PECAM-1 in cell-cell junctions of human endothelial cells. *J. Cell Biol.* 126: 247-258.
8. Takeichi, M. 1995. Morphogenetic roles of classic cadherins. *Curr. Opin. Cell Biol.* 7: 619-627.

CHROMOSOMAL LOCATION

Genetic locus: Cdh17 (mouse) mapping to 4 A1.

PRODUCT

LI-cadherin (m): 293T Lysate represents a lysate of mouse LI-cadherin transfected 293T cells and is provided as 100 μ g protein in 200 μ l SDS-PAGE buffer.

STORAGE

Store at -20° C. Repeated freezing and thawing should be minimized. Sample vial should be boiled once prior to use. Non-hazardous. No MSDS required.

RESEARCH USE

For research use only, not for use in diagnostic procedures.

APPLICATIONS

LI-cadherin (m): 293T Lysate is suitable as a Western Blotting positive control for mouse reactive LI-cadherin antibodies. Recommended use: 10-20 μ l per lane.

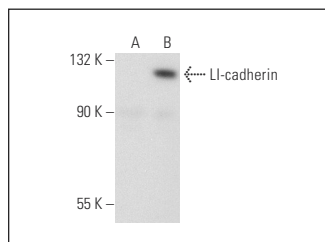
Control 293T Lysate: sc-117752 is available as a Western Blotting negative control lysate derived from non-transfected 293T cells.

LI-cadherin (CAEX3): sc-74209 is recommended as a positive control antibody for Western Blot analysis of enhanced mouse LI-cadherin expression in LI-cadherin transfected 293T cells (starting dilution 1:100, dilution range 1:100-1:1,000).

RECOMMENDED SUPPORT REAGENTS

To ensure optimal results, the following support reagents are recommended:
1) Western Blotting: use m-IgG κ BP-HRP: sc-516102 or m-IgG κ BP-HRP (Cruz Marker): sc-516102-CM (dilution range: 1:1000-1:10000), Cruz Marker™ Molecular Weight Standards: sc-2035, UltraCruz® Blocking Reagent: sc-516214 and Western Blotting Luminol Reagent: sc-2048.

DATA



LI-cadherin (CAEX3): sc-74209. Western blot analysis of LI-cadherin expression in non-transfected: sc-117752 (A) and mouse LI-cadherin transfected: sc-125545 (B) 293T whole cell lysates.

PROTOCOLS

See our web site at www.scbt.com for detailed protocols and support products.