

20S Proteasome α 8 (N-96): sc-130488

BACKGROUND

The proteasome represents a large protein complex that exists inside all eukaryotes and archaea, and in some bacteria. The main function of proteasomes is to degrade unnecessary or damaged proteins by proteolysis. The most common form of the proteasome, known as the 26S Proteasome, contains one 20S Proteasome core particle structure and two 19S regulatory caps. The 20S Proteasome core is hollow and forms an enclosed cavity, where proteins are degraded, as well as openings at the two ends to allow the target protein to enter. The 20S Proteasome core particle contains many subunits, depending on the organism. All of the subunits fall into one of two types: α subunits, which are structural, serve as docking domains for the regulatory particles and exterior gates blocking unregulated access to the interior cavity; or β subunits, which are predominantly catalytic. The outer two rings in the proteasome consist of seven α subunits each, and the inner two rings each consist of seven β subunits.

REFERENCES

- Kristensen, P., Johnsen, A.H., Uerkvitz, W., Tanaka, K. and Hendil, K.B. 1995. Human proteasome subunits from two-dimensional gels identified by partial sequencing. *Biochem. Biophys. Res. Commun.* 205: 1785-1789.
- Morimoto, Y., Mizushima, T., Yagi, A., Tanahashi, N., Tanaka, K., Ichihara, A. and Tsukihara, T. 1995. Ordered structure of the crystallized bovine 20S Proteasome. *J. Biochem.* 117: 471-474.
- Wenzel, T. and Baumeister, W. 1995. Conformational constraints in protein degradation by the 20S Proteasome. *Nat. Struct. Biol.* 2: 199-204.
- Schmidt, M., Schmidtke, G. and Kloetzel, P.M. 1997. Structure and structure formation of the 20S Proteasome. *Mol. Biol. Rep.* 24: 103-112.
- Sassa, H., Oguchi, S., Inoue, T. and Hirano, H. 2000. Primary structural features of the 20S Proteasome subunits of rice (*Oryza sativa*). *Gene* 250: 61-66.
- Ferrington, D.A. and Kappahn, R.J. 2004. Catalytic site-specific inhibition of the 20S Proteasome by 4-hydroxynonenal. *FEBS Lett.* 578: 217-223.
- Huang, L. and Burlingame, A.L. 2006. Comprehensive mass spectrometric analysis of the 20S Proteasome complex. *Meth. Enzymol.* 405: 187-236.
- Madding, L.S., Michel, J.K., Shockley, K.R., Connors, S.B., Epting, K.L., Johnson, M.R. and Kelly, R.M. 2006. Role of the β 1 subunit in the function and stability of the 20S Proteasome in the hyperthermophilic archaeon *Pyrococcus furiosus*. *J. Bacteriol.* 189: 583-590.
- Ryzewski, R.M., Burrill, L., Mendonca, R., Palmer, J.T., Rice, M., Tahilramani, R., Bass, K.E., Leung, L., Gjerstad, E., Janc, J.W. and Pan, L. 2006. Optimization of subsite binding to the β 5 subunit of the human 20S Proteasome using vinyl sulfones and 2-keto-1,3,4-oxadiazoles: syntheses and cellular properties of potent, selective proteasome inhibitors. *J. Med. Chem.* 49: 2953-2968.

STORAGE

Store at 4° C, ****DO NOT FREEZE****. Stable for one year from the date of shipment. Non-hazardous. No MSDS required.

CHROMOSOMAL LOCATION

Genetic locus: PSMA8 (human) mapping to 18q11.2.

SOURCE

20S Proteasome α 8 (N-96) is a mouse monoclonal antibody raised against recombinant 20S Proteasome α 8 of human origin.

PRODUCT

Each vial contains 50 μ g IgG₁ kappa light chain in 0.5 ml of PBS with < 0.1% sodium azide and 0.1% gelatin.

APPLICATIONS

20S Proteasome α 8 (N-96) is recommended for detection of 20S Proteasome α 8 of human origin by Western Blotting (starting dilution 1:200, dilution range 1:100-1:1000) and immunoprecipitation [1-2 μ g per 100-500 μ g of total protein (1 ml of cell lysate)].

Suitable for use as control antibody for 20S Proteasome α 8 siRNA (h): sc-62888, 20S Proteasome α 8 shRNA Plasmid (h): sc-62888-SH and 20S Proteasome α 8 shRNA (h) Lentiviral Particles: sc-62888-V.

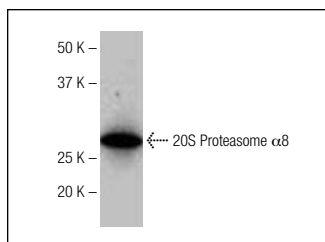
Molecular Weight of 20S Proteasome α 8: 28 kDa.

Positive Controls: K-562 whole cell lysate: sc-2203.

RECOMMENDED SUPPORT REAGENTS

To ensure optimal results, the following support reagents are recommended:
 1) Western Blotting: use m-IgG κ BP-HRP: sc-516102 or m-IgG κ BP-HRP (Cruz Marker): sc-516102-CM (dilution range: 1:1000-1:10000), Cruz Marker™ Molecular Weight Standards: sc-2035, TBS Blotto A Blocking Reagent: sc-2333 and Western Blotting Luminol Reagent: sc-2048. 2) Immunoprecipitation: use Protein A/G PLUS-Agarose: sc-2003 (0.5 ml agarose/2.0 ml).

DATA



20S Proteasome α 8 (N-96): sc-130488. Western blot analysis of 20S Proteasome α 8 expression in K-562 whole cell lysate.

RESEARCH USE

For research use only, not for use in diagnostic procedures.

PROTOCOLS

See our web site at www.scbt.com for detailed protocols and support products.