

PAT2 (O-62): sc-130490

BACKGROUND

The proton-coupled amino acid transporter family consists of four family members, namely PAT1, PAT2, PAT3 and PAT4, all of which mediate the 1:1 symport of protons and small neutral amino acids and derivatives across both intracellular and plasma membranes. Substrates for the PAT family members include L- and D-proline, glycine and L-alanine, 3-amino-1-propanesulfonic acid, L-azetidine-2-carboxylic acid and cis-4-hydroxy-D-proline. PAT1 expression is high in intestine and brain where it localizes to the brush border membrane, thereby allowing PAT1 to serve as a novel route for oral drug delivery. PAT2 shows high expression in spinal cord and brain, while PAT3 expression is found in testis. PAT4 is a multi-pass membrane protein that is expressed as two alternatively spliced isoforms. All four PAT family members contain three conserved histidine residues with His-55 found to be essential for catalytic activity of PAT1.

REFERENCES

- Boll, M., et al. 2003. A cluster of proton/amino acid transporter genes in the human and mouse genomes. *Genomics* 82: 47-56.
- Foltz, M., et al. 2004. Substrate specificity and transport mode of the proton-dependent amino acid transporter mPAT2. *Eur. J. Biochem.* 271: 3340-3347.
- Rubio-Aliaga, I., et al. 2004. The proton/amino acid cotransporter PAT2 is expressed in neurons with a different subcellular localization than its paralog PAT1. *J. Biol. Chem.* 279: 2754-2760.
- Boll, M., et al. 2004. The SLC36 family: proton-coupled transporters for the absorption of selected amino acids from extracellular and intracellular proteolysis. *Pflugers Arch.* 447: 776-779.
- Metzner, L., et al. 2006. Substrate specificity of the amino acid transporter PAT1. *Amino Acids* 31: 111-117.
- Metzner, L. and Brandsch, M. 2006. Influence of a proton gradient on the transport kinetics of the H⁺/amino acid cotransporter PAT1 in Caco-2 cells. *Eur. J. Pharm. Biopharm.* 63: 360-364.
- Thwaites, D.T. and Anderson, C.M. 2007. Deciphering the mechanisms of intestinal imino (and amino) acid transport: the redemption of SLC36A1. *Biochim. Biophys. Acta* 1768: 179-197.
- Metzner, L., et al. 2008. Mutational analysis of histidine residues in the human proton-coupled amino acid transporter PAT1. *Biochim. Biophys. Acta* 1778: 1042-1050.

CHROMOSOMAL LOCATION

Genetic locus: SLC36A2 (human) mapping to 5q33.1.

SOURCE

PAT2 (O-62) is a mouse monoclonal antibody raised against recombinant PAT2 of human origin.

PRODUCT

Each vial contains 100 µg IgG_{2b} kappa light chain in 1.0 ml of PBS with < 0.1% sodium azide and 0.1% gelatin.

APPLICATIONS

PAT2 (O-62) is recommended for detection of PAT2 of human origin by Western Blotting (starting dilution 1:200, dilution range 1:100-1:1000) and immunoprecipitation [1-2 µg per 100-500 µg of total protein (1 ml of cell lysate)].

Suitable for use as control antibody for PAT2 siRNA (h): sc-91668, PAT2 shRNA Plasmid (h): sc-91668-SH and PAT2 shRNA (h) Lentiviral Particles: sc-91668-V.

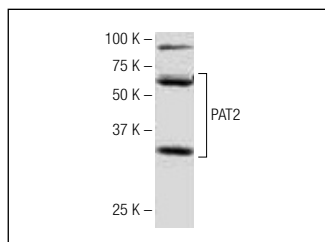
Molecular Weight of PAT2: 53 kDa.

Positive Controls: A-431 whole cell lysate: sc-2201.

RECOMMENDED SUPPORT REAGENTS

To ensure optimal results, the following support reagents are recommended:
1) Western Blotting: use m-IgGκ BP-HRP: sc-516102 or m-IgGκ BP-HRP (Cruz Marker): sc-516102-CM (dilution range: 1:1000-1:10000), Cruz Marker™ Molecular Weight Standards: sc-2035, TBS Blotto A Blocking Reagent: sc-2333 and Western Blotting Luminol Reagent: sc-2048. 2) Immunoprecipitation: use Protein A/G PLUS-Agarose: sc-2003 (0.5 ml agarose/2.0 ml).

DATA



PAT2 (O-62): sc-130490. Western blot analysis of PAT2 expression in A-431 whole cell lysate.

STORAGE

Store at 4° C, **DO NOT FREEZE**. Stable for one year from the date of shipment. Non-hazardous. No MSDS required.

RESEARCH USE

For research use only, not for use in diagnostic procedures.

PROTOCOLS

See our web site at www.scbt.com for detailed protocols and support products.