

Islet-2 (203C5a): sc-130648

BACKGROUND

Islet-2 (insulin gene enhancer protein ISL-2) is a 359 amino acid protein encoded by the human gene ISL2. Islet-2 is a nuclear protein that contains two N-terminal LIM domains, followed by a homeodomain and a serine/glutamine/threonine-rich C-terminus. Islet-2 is a transcriptional factor that defines subclasses of motor neurons that segregate into columns in the spinal cord and select distinct axon pathways. Islet-1 and Islet-2 are initially expressed by all postmitotic spinal motor neurons prior to diversification of somatic and visceral neuronal fates. Somatic, but not visceral, motor neurons maintain Islet-2 expression at later embryonic stages. An early phase of Islet-2 expression by prospective visceral motor neurons of the sympathetic preganglionic motor column is critical for the emergence of complete visceral motor neuron character. Mutations that reduce or eliminate both Islet-1 and Islet-2 activity will result in pronounced defects in visceral motor neuron generation and eroded somatic motor neuron character.

REFERENCES

1. Segawa, H., et al. 2001. Functional repression of Islet-2 by disruption of complex with Ldb impairs peripheral axonal outgrowth in embryonic zebrafish. *Neuron* 30: 423-436.
2. Koulakov, A.A. and Tsiganov, D.N. 2004. A stochastic model for retinocollicular map development. *BMC Neurosci.* 5: 30.
3. Yeo, S.Y., et al. 2004. Involvement of Islet-2 in the Slit signaling for axonal branching and defasciculation of the sensory neurons in embryonic zebrafish. *Mech. Dev.* 121: 315-324.
4. Pak, W., et al. 2004. Magnitude of binocular vision controlled by Islet-2 repression of a genetic program that specifies laterality of retinal axon pathfinding. *Cell* 119: 567-578.
5. Ravier, M.A. and Rutter, G.A. 2005. Glucose or Insulin, but not zinc ions, inhibit glucagon secretion from mouse pancreatic α -cells. *Diabetes* 54: 1789-1797.
6. Edqvist, P.H., et al. 2006. Early identification of retinal subtypes in the developing, pre-laminated chick retina using the transcription factors Prox1, Lim1, Ap2a, Pax6, Isl1, Isl2, Lim3 and Chx10. *Eur. J. Histochem.* 50: 147-154.
7. Li, Y., et al. 2007. Cloning and expression of a novel human gene, Isl-2, encoded a LIM-homeodomain protein. *Mol. Biol. Rep.* 34: 19-26.

CHROMOSOMAL LOCATION

Genetic locus: ISL2 (human) mapping to 15q24.3.

SOURCE

Islet-2 (203C5a) is a mouse monoclonal antibody raised against a recombinant protein corresponding to an internal region of Islet-2 of human origin.

PRODUCT

Each vial contains 100 μ g IgG_{2b} in 1.0 ml PBS with < 0.1% sodium azide and 1.0% gelatin.

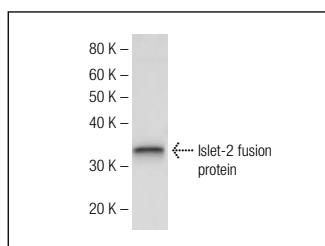
APPLICATIONS

Islet-2 (203C5a) is recommended for detection of Islet-2 of human origin by Western Blotting (starting dilution 1:200, dilution range 1:100-1:1000) and immunoprecipitation [1-2 μ g per 100-500 μ g of total protein (1 ml of cell lysate)].

Suitable for use as control antibody for Islet-2 siRNA (h): sc-62509, Islet-2 shRNA Plasmid (h): sc-62509-SH and Islet-2 shRNA (h) Lentiviral Particles: sc-62509-V.

Molecular Weight of Islet-2: 40 kDa.

DATA



Islet-2 (203C5a): sc-130648. Western blot analysis of human recombinant Islet-2 fusion protein.

STORAGE

Store at 4° C, ****DO NOT FREEZE****. Stable for one year from the date of shipment. Non-hazardous. No MSDS required.

RESEARCH USE

For research use only, not for use in diagnostic procedures.

PROTOCOLS

See our web site at www.scbt.com for detailed protocols and support products.