

# Id1 (B-1): sc-133103



The Power to Question

## BACKGROUND

Members of the Id family of basic helix-loop-helix (bHLH) proteins include Id1, Id2, Id3 and Id4. They are ubiquitously expressed and dimerize with members of the class A and B HLH proteins. Due to the absence of the basic region, the resulting heterodimers cannot bind DNA. The Id-type proteins thus appear to negatively regulate DNA binding of bHLH proteins. Since Id1 inhibits DNA binding of E12 and MyoD, it apparently functions to inhibit muscle-specific gene expression. Under conditions that facilitate muscle cell differentiation, the Id protein levels fall, allowing E12 and/or E47 to form heterodimers with MyoD and myogenin, which in turn activate myogenic differentiation. It has been shown that expression of each of the Id proteins is strongly dependent on growth factor activation and that reduction of Id mRNA levels by antisense oligonucleotides leads to a delayed reentry of arrested cells into the cell cycle following growth factor stimulation.

## CHROMOSOMAL LOCATION

Genetic locus: ID1 (human) mapping to 20q11.21; Id1 (mouse) mapping to 2 H1.

## SOURCE

Id1 (B-1) is a mouse monoclonal antibody specific for an epitope mapping between amino acids 118-159 at the C-terminus of Id1 of mouse origin.

## PRODUCT

Each vial contains 200 µg IgG<sub>2a</sub> kappa light chain in 1.0 ml of PBS with < 0.1% sodium azide and 0.1% gelatin. Also available as TransCruz reagent for Gel Supershift and ChIP applications, sc-133103 X, 200 µg/0.1 ml.

Blocking peptide available for competition studies, sc-133103 P, (100 µg peptide in 0.5 ml PBS containing < 0.1% sodium azide and 0.2% stabilizer protein).

## APPLICATIONS

Id1 (B-1) is recommended for detection of Id1 of mouse, rat and human origin by Western Blotting (starting dilution 1:100, dilution range 1:100-1:1000), immunoprecipitation [1-2 µg per 100-500 µg of total protein (1 ml of cell lysate)], immunofluorescence (starting dilution 1:50, dilution range 1:50-1:500), immunohistochemistry (including paraffin-embedded sections) (starting dilution 1:50, dilution range 1:50-1:500) and solid phase ELISA (starting dilution 1:30, dilution range 1:30-1:3000). Id1 (B-1) is also recommended for detection of Id1 in additional species, including canine.

Suitable for use as control antibody for Id1 siRNA (h): sc-29356, Id1 siRNA (m): sc-35632, Id1 shRNA Plasmid (h): sc-29356-SH, Id1 shRNA Plasmid (m): sc-35632-SH, Id1 shRNA (h) Lentiviral Particles: sc-29356-V and Id1 shRNA (m) Lentiviral Particles: sc-35632-V.

Id1 (B-1) X TransCruz antibody is recommended for Gel Supershift and ChIP applications.

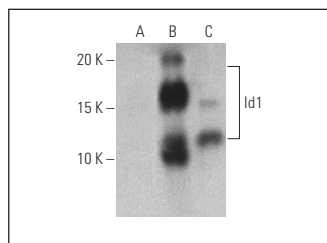
Molecular Weight of Id1: 15 kDa.

Positive Controls: Id1 (h2): 293T Lysate: sc-171632, PC-3 cell lysate: sc-2220 or HeLa whole cell lysate: sc-2200.

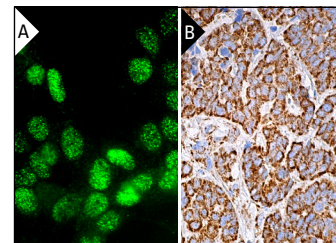
## RECOMMENDED SUPPORT REAGENTS

To ensure optimal results, the following support reagents are recommended: 1) Western Blotting: use m-IgGκ BP-HRP: sc-516102 or m-IgGκ BP-HRP (Cruz Marker): sc-516102-CM (dilution range: 1:1000-1:10000), Cruz Marker™ Molecular Weight Standards: sc-2035, UltraCruz® Blocking Reagent: sc-516214 and Western Blotting Luminol Reagent: sc-2048. 2) Immunoprecipitation: use Protein A/G PLUS-Agarose: sc-2003 (0.5 ml agarose/2.0 ml). 3) Immunofluorescence: use m-IgGκ BP-FITC: sc-516140 or m-IgGκ BP-PE: sc-516141 (dilution range: 1:50-1:200) with UltraCruz® Mounting Medium: sc-24941 or UltraCruz® Hard-set Mounting Medium: sc-359850. 4) Immunohistochemistry: use m-IgGκ BP-HRP: sc-516102 with DAB, 50X: sc-24982 and Immunohistomount: sc-45086, or Organo/Limonene Mount: sc-45087.

## DATA



Id1 (B-1): sc-133103. Western blot analysis of Id1 expression in non-transfected 293T: sc-117752 (A), human Id1 transfected 293T: sc-171632 (B) and PC-3 (C) whole cell lysates. Detection reagent used: m-IgG<sub>2a</sub> BP-HRP: sc-542731.



Id1 (B-1): sc-133103. Immunofluorescence staining of formalin-fixed Hep G2 cells showing nuclear localization (A). Immunoperoxidase staining of formalin fixed, paraffin-embedded human pancreas tissue showing cytoplasmic staining of glandular cells (B).

## SELECT PRODUCT CITATIONS

- Levet, S., et al. 2015. BMP9 and BMP10 are necessary for proper closure of the ductus arteriosus. *Proc. Natl. Acad. Sci. USA* 112: E3207-E3215.
- Ren, T., et al. 2021. Id1 inhibits foot-and-mouth disease virus replication via targeting of interferon pathways. *FEBS J.* 288: 4364-4381.

## STORAGE

Store at 4° C, **\*\*DO NOT FREEZE\*\***. Stable for one year from the date of shipment. Non-hazardous. No MSDS required.

## RESEARCH USE

For research use only, not for use in diagnostic procedures.

## PROTOCOLS

See our web site at [www.scbt.com](http://www.scbt.com) for detailed protocols and support products.



See **Id1 (B-8): sc-133104** for Id1 antibody conjugates, including AC, HRP, FITC, PE, and Alexa Fluor® 488, 546, 594, 647, 680 and 790.