

caspase-7 p20 (C-12): sc-133248

BACKGROUND

A unique family of Cysteine proteases has been described that differs in sequence, structure and substrate specificity from any previously described protease family. This family, Ced-3/caspase-1, is comprised of caspase-1, caspase-2, caspase-3, caspase-4, caspase-6, caspase-7 (also designated Mch3, ICE-LAP3 or CMH-1), caspase-9 and caspase-10. Ced-3/caspase-1 family members function as key components of the apoptotic machinery and act to destroy specific target proteins which are critical to cellular longevity. Poly(ADP-ribose) polymerase plays an integral role in surveying for DNA mutations and double strand breaks. Caspase-3, caspase-7 and caspase-9, but not caspase-1, have been shown to cleave the nuclear protein PARP into an apoptotic fragment. Caspase-6, but not caspase-3, has been shown to cleave the nuclear lamins which are critical to maintaining the integrity of the nuclear envelope and cellular morphology. Caspase-10 has been shown to activate caspase-3 and caspase-7 in response to apoptotic stimuli.

CHROMOSOMAL LOCATION

Genetic locus: CASP7 (human) mapping to 10q25.3; Casp7 (mouse) mapping to 19 D2.

SOURCE

caspase-7 p20 (C-12) is a mouse monoclonal antibody raised against amino acids 76-140 mapping within an internal region of caspase-7 p20 of human origin.

PRODUCT

Each vial contains 200 µg IgG_{2a} kappa light chain in 1.0 ml of PBS with < 0.1% sodium azide and 0.1% gelatin.

RESEARCH USE

For research use only, not for use in diagnostic procedures.

APPLICATIONS

caspase-7 p20 (C-12) is recommended for detection of p20 subunit and precursor of caspase-7 of mouse, rat and human origin by Western Blotting (starting dilution 1:100, dilution range 1:100-1:1000), immunoprecipitation [1-2 µg per 100-500 µg of total protein (1 ml of cell lysate)], immunofluorescence (starting dilution 1:50, dilution range 1:50-1:500), immunohistochemistry (including paraffin-embedded sections) (starting dilution 1:50, dilution range 1:50-1:500) and solid phase ELISA (starting dilution 1:30, dilution range 1:30-1:3000).

Suitable for use as control antibody for caspase-7 siRNA (h): sc-29929, caspase-7 siRNA (m): sc-29928, caspase-7 shRNA Plasmid (h): sc-29929-SH, caspase-7 shRNA Plasmid (m): sc-29928-SH, caspase-7 shRNA (h) Lentiviral Particles: sc-29929-V and caspase-7 shRNA (m) Lentiviral Particles: sc-29928-V.

Molecular Weight of procaspase-7 splice variants: 28-38 kDa.

Molecular Weight of caspase-7 p20/p10 subunits: 20/10 kDa.

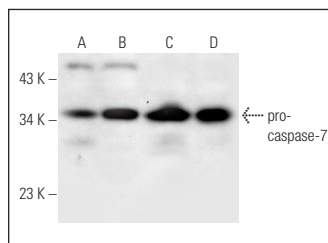
Positive Controls: HeLa + UV cell lysate: sc-2221, MOLT-4 cell lysate: sc-2233 or Jurkat whole cell lysate: sc-2204.

RECOMMENDED SUPPORT REAGENTS

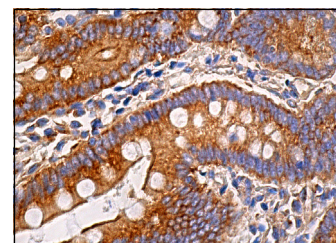
To ensure optimal results, the following support reagents are recommended:

- 1) Western Blotting: use m-IgGκ BP-HRP: sc-516102 or m-IgGκ BP-HRP (Cruz Marker): sc-516102-CM (dilution range: 1:1000-1:10000), Cruz Marker™ Molecular Weight Standards: sc-2035, UltraCruz® Blocking Reagent: sc-516214 and Western Blotting Luminol Reagent: sc-2048.
- 2) Immunoprecipitation: use Protein A/G PLUS-Agarose: sc-2003 (0.5 ml agarose/2.0 ml).
- 3) Immunofluorescence: use m-IgGκ BP-FITC: sc-516140 or m-IgGκ BP-PE: sc-516141 (dilution range: 1:50-1:200) with UltraCruz® Mounting Medium: sc-24941 or UltraCruz® Hard-set Mounting Medium: sc-359850.
- 4) Immunohistochemistry: use m-IgGκ BP-HRP: sc-516102 with DAB, 50X: sc-24982 and Immunohistomount: sc-45086, or Organo/Limonene Mount: sc-45087.

DATA



caspase-7 p20 (C-12): sc-133248. Western blot analysis of caspase-7 p20 expression in HeLa (A), UV-treated HeLa (B), MOLT-4 (C) and Jurkat (D) whole cell lysates.



caspase-7 p20 (C-12): sc-133248. Immunoperoxidase staining of formalin fixed, paraffin-embedded human duodenum tissue showing cytoplasmic staining of glandular cells.

SELECT PRODUCT CITATIONS

1. Sari, A.N., et al. 2021. Identification and characterization of mortapari^{Plus}—a novel triazole derivative that targets mortalin-p53 interaction and inhibits cancer-cell proliferation by wild-type p53-dependent and -independent mechanisms. *Cancers* 13: 835.

STORAGE

Store at 4° C, ****DO NOT FREEZE****. Stable for one year from the date of shipment. Non-hazardous. No MSDS required.

PROTOCOLS

See our web site at www.scbt.com for detailed protocols and support products.