

Angptl5 (7-RE8): sc-134258

BACKGROUND

Angptl5 (angiopoietin-like 5) is a 388 amino acid secreted protein that contains one fibrinogen C-terminal domain and is primarily expressed in adult heart tissue. The gene encoding Angptl5 maps to human chromosome 11. With approximately 135 million base pairs and 1,400 genes, chromosome 11 comprises approximately 4% of human genomic DNA and is considered a gene and disease association dense chromosome. The chromosome 11 encoded ATM gene is important for regulation of cell cycle arrest and apoptosis following double strand DNA breaks. ATM mutation leads to the disorder known as ataxia-telangiectasia. The blood disorders Sickle cell anemia and thalassemia are caused by HBB gene mutations, while Wilms' tumors, WAGR syndrome and Denys-Drash syndrome are associated with mutations of the WT1 gene. Jervell and Lange-Nielsen syndrome, Jacobsen syndrome, Niemann-Pick disease, hereditary angioedema and Smith-Lemli-Opitz syndrome are also associated with defects in chromosome 11-encoded genes.

REFERENCES

- Zeng, L., Dai, J., Ying, K., Zhao, E., Jin, W., Ye, Y., Dai, J., Xu, J., Xie, Y. and Mao, Y. 2003. Identification of a novel human angiopoietin-like gene expressed mainly in heart. *J. Hum. Genet.* 48: 159-162.
- Online Mendelian Inheritance in Man, OMIM[™]. 2003. Johns Hopkins University, Baltimore, MD. MIM Number: 607666. World Wide Web URL: <http://www.ncbi.nlm.nih.gov/omim/>
- Grossfeld, P.D., Mattina, T., Lai, Z., Favier, R., Jones, K.L., Cotter, F. and Jones, C. 2004. The 11q terminal deletion disorder: a prospective study of 110 cases. *Am. J. Med. Genet. A* 129A: 51-61.
- Loussouarn, G., Baró, I. and Escande, D. 2006. KCNQ1 K⁺ channel-mediated cardiac channelopathies. *Methods Mol. Biol.* 337: 167-183.
- Taylor, T.D., Noguchi, H., Totoki, Y., Toyoda, A., Kuroki, Y., Dewar, K., Lloyd, C., Itoh, T., Takeda, T., Kim, D.W., She, X., Barlow, K.F., Bloom, T., Bruford, E., Chang, J.L., Cuomo, C.A., Eichler, E., Fitzgerald, M.G., Jaffe, D.B., et al. 2006. Human chromosome 11 DNA sequence and analysis including novel gene identification. *Nature* 440: 497-500.
- Zehelein, J., Kathoefer, S., Khalil, M., Alter, M., Thomas, D., Brockmeier, K., Ulmer, H.E., Katus, H.A. and Koenen, M. 2006. Skipping of Exon 1 in the KCNQ1 gene causes Jervell and Lange-Nielsen syndrome. *J. Biol. Chem.* 281: 35397-35403.
- Ataga, K.I., Cappellini, M.D. and Rachmilewitz, E.A. 2007. β -thalassaemia and sickle cell anaemia as paradigms of hypercoagulability. *Br. J. Haematol.* 139: 3-13.
- Berger, A.C., Salazar, G., Styers, M.L., Newell-Litwa, K.A., Werner, E., Maue, R.A., Corbett, A.H. and Faundez, V. 2007. The subcellular localization of the Niemann-Pick type C proteins depends on the adaptor complex AP-3. *J. Cell Sci.* 120: 3640-3652.

STORAGE

Store at 4° C, ****DO NOT FREEZE****. Stable for one year from the date of shipment. Non-hazardous. No MSDS required.

CHROMOSOMAL LOCATION

Genetic locus: ANGPTL5 (human) mapping to 11q22.1.

SOURCE

Angptl5 (7-RE8) is a mouse monoclonal antibody raised against recombinant Angptl5 protein of human origin.

PRODUCT

Each vial contains 50 μ g IgG_{2a} kappa light chain in 0.5 ml of PBS with < 0.1% sodium azide and 0.1% gelatin.

APPLICATIONS

Angptl5 (7-RE8) is recommended for detection of Angptl5 of human origin by Western Blotting (starting dilution 1:200, dilution range 1:100-1:1000), immunoprecipitation [1-2 μ g per 100-500 μ g of total protein (1 ml of cell lysate)] and solid phase ELISA (starting dilution 1:30, dilution range 1:30-1:3000).

Suitable for use as control antibody for Angptl5 siRNA (h): sc-96924, Angptl5 shRNA Plasmid (h): sc-96924-SH and Angptl5 shRNA (h) Lentiviral Particles: sc-96924-V.

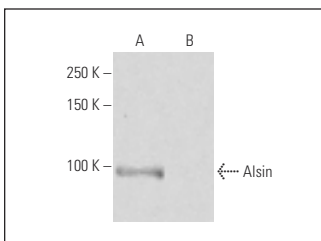
Molecular Weight of Angptl5: 44 kDa.

Positive Controls: human Angptl5 transfected 293T whole cell lysate.

RECOMMENDED SUPPORT REAGENTS

To ensure optimal results, the following support reagents are recommended: 1) Western Blotting: use m-IgG κ BP-HRP: sc-516102 or m-IgG κ BP-HRP (Cruz Marker): sc-516102-CM (dilution range: 1:1000-1:10000), Cruz Marker[™] Molecular Weight Standards: sc-2035, UltraCruz[®] Blocking Reagent: sc-516214 and Western Blotting Luminol Reagent: sc-2048. 2) Immunoprecipitation: use Protein A/G PLUS-Agarose: sc-2003 (0.5 ml agarose/2.0 ml).

DATA



Alsin (2J10): sc-134256. Western blot analysis of Alsin expression in human Alsin transfected (A) and non-transfected (B) 293T whole cell lysates.

RESEARCH USE

For research use only, not for use in diagnostic procedures.

PROTOCOLS

See our web site at www.scbt.com for detailed protocols and support products.