

Bcl-B (3B4): sc-134279

BACKGROUND

Members of the Bcl-2 family of proteins regulate cell survival by either inhibiting apoptosis or by facilitating the complicated process of cell death. Bcl-B, also known as BCL2L10, Diva, Boo or BCLB, is a widely expressed 194 amino acid member of the Bcl-2 protein family. Localized to the nuclear membrane, Bcl-B promotes cell survival by suppressing Bax-induced apoptosis. Bcl-2 contains a BH4 domain as well as a transmembrane domain, both of which are necessary for its antiapoptotic effects. Overexpression of Bcl-B is thought to prevent the release of cytochrome C from the mitochondria, thereby triggering caspase-3 activation and suppressing cell apoptosis. Bcl-B is implicated in the pathogenesis of cervical cancer.

REFERENCES

1. Ke, N., Godzik, A. and Reed, J.C. 2001. Bcl-B, a novel Bcl-2 family member that differentially binds and regulates Bax and Bak. *J. Biol. Chem.* 276: 12481-12484.
2. Lee, R., Chen, J., Matthews, C.P., McDougall, J.K. and Neiman, P.E. 2001. Characterization of NR13-related human cell death regulator, Boo/Divia, in normal and cancer tissues. *Biochim. Biophys. Acta* 1520: 187-194.
3. Itoh, T., Itoh, A. and Pleasure, D. 2003. Bcl-2-related protein family gene expression during oligodendroglial differentiation. *J. Neurochem.* 85: 1500-1512.
4. Yasui, K., Mihara, S., Zhao, C., Okamoto, H., Saito-Ohara, F., Tomida, A., Funato, T., Yokomizo, A., Naito, S., Imoto, I., Tsuruo, T. and Inazawa, J. 2004. Alteration in copy numbers of genes as a mechanism for acquired drug resistance. *Cancer Res.* 64: 1403-1410.
5. Mikata, R., Yokosuka, O., Fukai, K., Imazeki, F., Arai, M., Tada, M., Kurihara, T., Zhang, K., Kanda, T. and Saisho, H. 2006. Analysis of genes upregulated by the demethylating agent 5-aza-2'-deoxycytidine in gastric cancer cell lines. *Int. J. Cancer* 119: 1616-1622.
6. Kang, Y., Lee, D.C., Han, J., Yoon, S., Won, M., Yeom, J.H., Seong, M.J., Ko, J.J., Lee, K.A., Lee, K. and Bae, J. 2007. NM23-H2 involves in negative regulation of Diva and BCL2L10 in apoptosis signaling. *Biochem. Biophys. Res. Commun.* 359: 76-82.
7. Vandaele, L., Goossens, K., Peelman, L. and Van Soom, A. 2008. mRNA expression of Bcl-2, Bax, caspase-3 and -7 cannot be used as a marker for apoptosis in bovine blastocysts. *Anim. Reprod. Sci.* 106: 168-173.

CHROMOSOMAL LOCATION

Genetic locus: BCL2L10 (human) mapping to 15q21.2.

SOURCE

Bcl-B (3B4) is a mouse monoclonal antibody raised against recombinant Bcl-B protein of human origin.

PRODUCT

Each vial contains 100 µg IgG_{2b} kappa light chain in 1.0 ml of PBS with < 0.1% sodium azide and 0.1% gelatin.

APPLICATIONS

Bcl-B (3B4) is recommended for detection of Bcl-B of human origin by Western Blotting (starting dilution 1:200, dilution range 1:100-1:1000), immunoprecipitation [1-2 µg per 100-500 µg of total protein (1 ml of cell lysate)] and solid phase ELISA (starting dilution 1:30, dilution range 1:30-1:3000).

Suitable for use as control antibody for Bcl-B siRNA (h): sc-90043, Bcl-B shRNA Plasmid (h): sc-90043-SH and Bcl-B shRNA (h) Lentiviral Particles: sc-90043-V.

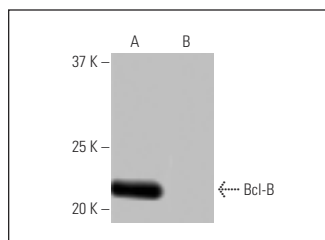
Molecular Weight of Bcl-B: 22 kDa.

Positive Controls: human Bcl-B transfected 293T whole cell lysate.

RECOMMENDED SUPPORT REAGENTS

To ensure optimal results, the following support reagents are recommended: 1) Western Blotting: use m-IgGκ BP-HRP: sc-516102 or m-IgGκ BP-HRP (Cruz Marker): sc-516102-CM (dilution range: 1:1000-1:10000), Cruz Marker™ Molecular Weight Standards: sc-2035, UltraCruz® Blocking Reagent: sc-516214 and Western Blotting Luminol Reagent: sc-2048. 2) Immunoprecipitation: use Protein A/G PLUS-Agarose: sc-2003 (0.5 ml agarose/2.0 ml).

DATA



Bcl-B (3B4): sc-134279. Western blot analysis of Bcl-B expression in human Bcl-B transfected (A) and non-transfected (B) 293T whole cell lysates.

STORAGE

Store at 4° C, **DO NOT FREEZE**. Stable for one year from the date of shipment. Non-hazardous. No MSDS required.

RESEARCH USE

For research use only, not for use in diagnostic procedures.

PROTOCOLS

See our web site at www.scbt.com for detailed protocols and support products.