

CTRP2 (10B8): sc-134307

BACKGROUND

CTRP2, also known as C1QTNF2 (C1q and tumor necrosis factor related protein 2) or *zacr2*, is a 285 amino acid secreted protein that contains one C1q domain and one collagen-like domain and is encoded by a gene that maps to human chromosome 5. Chromosome 5 contains 181 million base pairs and comprises nearly 6% of the human genome. Chromosome 5 is associated with Cockayne syndrome through the *ERCC8* gene and familial adenomatous polyposis through the adenomatous polyposis coli (*APC*) tumor suppressor gene. Treacher Collins syndrome is also chromosome 5-associated and is caused by insertions or deletions within the *TCOF1* gene. Deletion of the p arm of chromosome 5 leads to Cri du chat syndrome, while deletion of the q arm or of chromosome 5 altogether is common in therapy-related acute myelogenous leukemias and myelodysplastic syndrome.

REFERENCES

- Dixon, M.J., Read, A.P., Donnai, D., Colley, A., Dixon, J. and Williamson, R. 1991. The gene for Treacher Collins syndrome maps to the long arm of chromosome 5. *Am. J. Hum. Genet.* 49: 17-22.
- Saltman, D.L., Dolganov, G.M., Warrington, J.A., Wasmuth, J.J. and Lovett, M. 1993. A physical map of 15 loci on human chromosome 5q23-q33 by two-color fluorescence *in situ* hybridization. *Genomics* 16: 726-732.
- Law, S.F., Zhang, Y.Z., Klein-Szanto, A.J. and Golemis, E.A. 1998. Cell cycle-regulated processing of HEF1 to multiple protein forms differentially targeted to multiple subcellular compartments. *Mol. Cell. Biol.* 18: 3540-3551.
- South, S.T., Swensen, J.J., Maxwell, T., Rope, A., Brothman, A.R. and Chen, Z. 2006. A new genomic mechanism leading to Cri du Chat syndrome. *Am. J. Med. Genet. A* 140: 2714-2720.
- Du, H.Y., Idol, R., Robledo, S., Ivanovich, J., An, P., Londono-Vallejo, A., Wilson, D.B., Mason, P.J. and Bessler, M. 2007. Telomerase reverse transcriptase haploinsufficiency and telomere length in individuals with 5p-syndrome. *Aging Cell* 6: 689-697.

CHROMOSOMAL LOCATION

Genetic locus: C1QTNF2 (human) mapping to 5q33.3.

SOURCE

CTRP2 (10B8) is a mouse monoclonal antibody raised against recombinant CTRP2 protein of human origin.

PRODUCT

Each vial contains 100 µg IgG_{2a} kappa light chain in 1.0 ml of PBS with < 0.1% sodium azide and 0.1% gelatin.

STORAGE

Store at 4° C, ****DO NOT FREEZE****. Stable for one year from the date of shipment. Non-hazardous. No MSDS required.

RESEARCH USE

For research use only, not for use in diagnostic procedures.

APPLICATIONS

CTRP2 (10B8) is recommended for detection of CTRP2 of human origin by Western Blotting (starting dilution 1:200, dilution range 1:100-1:1000), immunoprecipitation [1-2 µg per 100-500 µg of total protein (1 ml of cell lysate)] and solid phase ELISA (starting dilution 1:30, dilution range 1:30-1:3000).

Suitable for use as control antibody for CTRP2 siRNA (h): sc-77049, CTRP2 shRNA Plasmid (h): sc-77049-SH and CTRP2 shRNA (h) Lentiviral Particles: sc-77049-V.

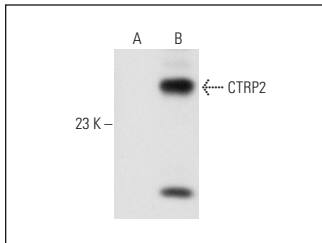
Molecular Weight of CTRP2: 30 kDa.

Positive Controls: CTRP2 (h): 293T Lysate: sc-116312.

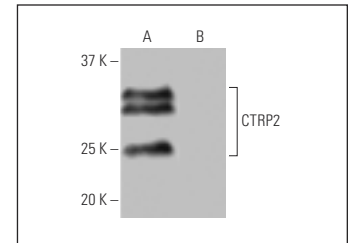
RECOMMENDED SUPPORT REAGENTS

To ensure optimal results, the following support reagents are recommended: 1) Western Blotting: use m-IgGκ BP-HRP: sc-516102 or m-IgGκ BP-HRP (Cruz Marker): sc-516102-CM (dilution range: 1:1000-1:10000), Cruz Marker™ Molecular Weight Standards: sc-2035, UltraCruz® Blocking Reagent: sc-516214 and Western Blotting Luminol Reagent: sc-2048. 2) Immunoprecipitation: use Protein A/G PLUS-Agarose: sc-2003 (0.5 ml agarose/2.0 ml).

DATA



CTRP2 (10B8): sc-134307. Western blot analysis of CTRP2 expression in non-transfected: sc-117752 (A) and human CTRP2 transfected: sc-116312 (B) 293T whole cell lysates.



CTRP2 (10B8): sc-134307. Western blot analysis of CTRP2 expression in human CTRP2 transfected (A) and non-transfected (B) 293T whole cell lysates.

PROTOCOLS

See our web site at www.scbt.com for detailed protocols and support products.