

Dlx-3 (3-RE45): sc-134317

BACKGROUND

Dlx genes are a highly conserved family of six different (Dlx1-6) homeo box-containing genes that share homology with distal-less (Dll), a gene expressed in the head and limbs of the developing fruit fly. Dlx genes are expressed in spatially and temporally restricted patterns in craniofacial primordia, basal telencephalon and diencephalon, and in distal regions of extending appendages, including the limb and the genital bud. The differential expression of Dlx influences patterning, morphogenesis and histogenesis in these tissues. The Dlx gene products can activate transcription and are localized primarily to the nucleus, although Dlx-5 can be found in the cytoplasm. Dlx proteins influence different stages of proper tissue development, including patterning of the orofacial skeleton (craniofacial ectomesenchyme) and differentiation of structures within and between teeth.

REFERENCES

- Weiss, K.M., Ruddle, F.H. and Bollekens, J. 1995. Dlx and other homeobox genes in the morphological development of the dentition. *Connect. Tissue Res.* 32: 35-40.
- Davideau, J.L., Demri, P., Gu, T.T., Simmons, D., Nessman, C., Forest, N., MacDougall, M. and Berdal, A. 1999. Expression of Dlx-5 during human embryonic craniofacial development. *Mech. Dev.* 81: 183-186.
- Depew, M.J., Liu, J.K., Long, J.E., Presley, R., Meneses, J.J., Pedersen, R.A. and Rubenstein, J.L. 1999. Dlx-5 regulates regional development of the branchial arches and sensory capsules. *Development* 126: 3831-3846.
- Eisenstat, D.D., Liu, J.K., Mione, M., Zhong, W., Yu, G., Anderson, S.A., Ghattas, I., Puelles, L. and Rubenstein, J.L. 1999. Dlx-1, Dlx-2, and Dlx-5 expression define distinct stages of basal forebrain differentiation. *J. Comp. Neurol.* 414: 217-237.
- Bendall, A.J. and Abate-Shen, C. 2000. Roles for Msx and Dlx homeoproteins in vertebrate development. *Gene* 247: 17-31.
- Merlo, G.R., Zerega, B., Paleari, L., Trombino, S., Mantero, S. and Levi, G. 2000. Multiple functions of Dlx genes. *Int. J. Dev. Biol.* 44: 619-626.
- LocusLink Report (LocusID: 1746). <http://www.ncbi.nlm.nih.gov/LocusLink/>

CHROMOSOMAL LOCATION

Genetic locus: DLX3 (human) mapping to 17q21.33; Dlx3 (mouse) mapping to 11 D.

SOURCE

Dlx-3 (3-RE45) is a mouse monoclonal antibody raised against recombinant Dlx-3 protein of human origin.

PRODUCT

Each vial contains 100 µg IgG_{2a} kappa light chain in 1.0 ml PBS with < 0.1% sodium azide and 0.1% gelatin.

STORAGE

Store at 4° C, ****DO NOT FREEZE****. Stable for one year from the date of shipment. Non-hazardous. No MSDS required.

APPLICATIONS

Dlx-3 (3-RE45) is recommended for detection of Dlx-3 of mouse, rat and human origin by Western Blotting (starting dilution 1:200, dilution range 1:100-1:1000), immunoprecipitation [1-2 µg per 100-500 µg of total protein (1 ml of cell lysate)] and solid phase ELISA (starting dilution 1:30, dilution range 1:30-1:3000).

Suitable for use as control antibody for Dlx-3 siRNA (h): sc-38653, Dlx-3 siRNA (m): sc-38654, Dlx-3 siRNA (r): sc-156087, Dlx-3 shRNA Plasmid (h): sc-38653-SH, Dlx-3 shRNA Plasmid (m): sc-38654-SH, Dlx-3 shRNA Plasmid (r): sc-156087-SH, Dlx-3 shRNA (h) Lentiviral Particles: sc-38653-V, Dlx-3 shRNA (m) Lentiviral Particles: sc-38654-V and Dlx-3 shRNA (r) Lentiviral Particles: sc-156087-V.

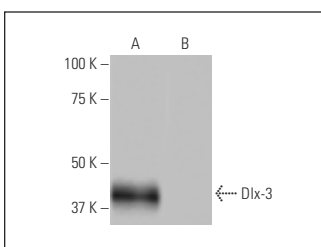
Molecular Weight of Dlx-3: 38-39 kDa.

Positive Controls: JEG-3 whole cell lysate: sc-364255 or human Dlx-3 transfected 293T whole cell lysate.

RECOMMENDED SUPPORT REAGENTS

To ensure optimal results, the following support reagents are recommended: 1) Western Blotting: use m-IgGκ BP-HRP: sc-516102 or m-IgGκ BP-HRP (Cruz Marker): sc-516102-CM (dilution range: 1:1000-1:10000), Cruz Marker™ Molecular Weight Standards: sc-2035, UltraCruz® Blocking Reagent: sc-516214 and Western Blotting Luminol Reagent: sc-2048. 2) Immunoprecipitation: use Protein A/G PLUS-Agarose: sc-2003 (0.5 ml agarose/2.0 ml).

DATA



Dlx-3 (3-RE45): sc-134317. Western blot analysis of Dlx-3 expression in human Dlx-3 transfected (A) and non-transfected (B) 293T whole cell lysates.

RESEARCH USE

For research use only, not for use in diagnostic procedures.

PROTOCOLS

See our web site at www.scbt.com for detailed protocols and support products.