

DNASE1L1 (KK-M3): sc-134320

BACKGROUND

DNASE1L1 (deoxyribonuclease I-like 1), also known as XIB, DNL1L or DNASEX, is a 302 amino acid protein that localizes to the endoplasmic reticulum and belongs to the deoxyribonuclease family. Expressed at high levels in cardiac and skeletal muscle and at lower levels in a variety of tissues throughout the body, DNASE1L1 exists as multiple alternatively spliced isoforms and is thought to function in a similar manner to DNase I, possibly mediating internucleosomal DNA degradation via catalytic cleavage events. The gene encoding DNASE1L1 maps to human chromosome X, which contains nearly 153 million base pairs and houses over 1,000 genes. In conjunction with chromosome Y, chromosome X is responsible for sex determination. There are a number of conditions related to an abnormal number and combination of sex chromosomes, some of which include Turner's syndrome, color blindness, hemophilia and Duchenne muscular dystrophy.

REFERENCES

- Parrish, J.E., Ciccociola, A., Wehert, M., Cox, G.F., Chen, E. and Nelson, D.L. 1995. A muscle-specific DNase I-like gene in human Xq28. *Hum. Mol. Genet.* 4: 1557-1564.
- Coy, J.F., Velhagen, I., Himmele, R., Delius, H., Poustka, A. and Zentgraf, H. 1996. Isolation, differential splicing and protein expression of a DNase on the human X chromosome. *Cell Death Differ.* 3: 199-206.
- Pergolizzi, R., Appierto, V., Bosetti, A., DeBellis, G.L., Rovida, E. and Biunno, I. 1996. Cloning of a gene encoding a DNase I-like endonuclease in the human Xq28 region. *Gene* 168: 267-270.
- Rodriguez, A.M., Rodin, D., Nomura, H., Morton, C.C., Weremowicz, S. and Schneider, M.C. 1997. Identification, localization, and expression of two novel human genes similar to deoxyribonuclease I. *Genomics* 42: 507-513.
- Online Mendelian Inheritance in Man, OMIM™. 1997. Johns Hopkins University, Baltimore, MD. MIM Number: 300081. World Wide Web URL: <http://www.ncbi.nlm.nih.gov/omim/>
- Malferrari, G., Mazza, U., Tresoldi, C., Rovida, E., Nissim, M., Mirabella, M., Servidei, S. and Biunno, I. 1999. Molecular characterization of a novel endonuclease (Xib) and possible involvement in lysosomal glycogen storage disorders. *Exp. Mol. Pathol.* 66: 123-130.
- Malferrari, G., Mirabella, M., D'Alessandra, Y., Servidei, S. and Biunno, I. 2001. Deletion polymorphism of DNASE1L1, an X-linked DNase I-like gene, in acid maltase deficiency disorders. *Exp. Mol. Pathol.* 70: 173-174.
- Shiokawa, D., Shika, Y., Saito, K., Yamazaki, K. and Tanuma, S. 2005. Physical and biochemical properties of mammalian DNase X proteins: non-AUG translation initiation of porcine and bovine mRNAs for DNase X. *Biochem. J.* 392: 511-517.

CHROMOSOMAL LOCATION

Genetic locus: DNASE1L1 (human) mapping to Xq28.

SOURCE

DNASE1L1 (KK-M3) is a mouse monoclonal antibody raised against recombinant DNASE1L1 protein of human origin.

PRODUCT

Each vial contains 100 µg IgG₁ kappa light chain in 1.0 ml of PBS with < 0.1% sodium azide and 0.1% gelatin.

APPLICATIONS

DNASE1L1 (KK-M3) is recommended for detection of DNASE1L1 of human origin by Western Blotting (starting dilution 1:200, dilution range 1:100-1:1000), immunoprecipitation [1-2 µg per 100-500 µg of total protein (1 ml of cell lysate)] and solid phase ELISA (starting dilution 1:30, dilution range 1:30-1:3000).

Suitable for use as control antibody for DNASE1L1 siRNA (h): sc-77165, DNASE1L1 shRNA Plasmid (h): sc-77165-SH and DNASE1L1 shRNA (h) Lentiviral Particles: sc-77165-V.

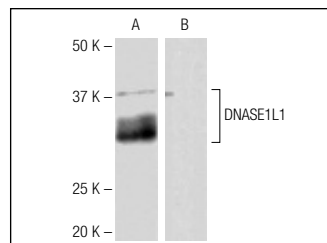
Molecular Weight of DNASE1L1: 34 kDa.

Positive Controls: A-673 cell lysate: sc-2414.

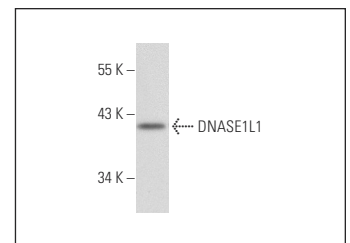
RECOMMENDED SUPPORT REAGENTS

To ensure optimal results, the following support reagents are recommended:
 1) Western Blotting: use m-IgGκ BP-HRP: sc-516102 or m-IgGκ BP-HRP (Cruz Marker): sc-516102-CM (dilution range: 1:1000-1:10000), Cruz Marker™ Molecular Weight Standards: sc-2035, TBS Blotto A Blocking Reagent: sc-2333 and Western Blotting Luminol Reagent: sc-2048.
 2) Immunoprecipitation: use Protein A/G PLUS-Agarose: sc-2003 (0.5 ml agarose/2.0 ml).

DATA



DNASE1L1 (KK-M3): sc-134320. Western blot analysis of DNASE1L1 expression in human DNASE1L1 transfected (A) and non-transfected (B) 293T whole cell lysates.



DNASE1L1 (KK-M3): sc-134320. Western blot analysis of DNASE1L1 expression in A-673 whole cell lysate.

STORAGE

Store at 4° C, **DO NOT FREEZE**. Stable for one year from the date of shipment. Non-hazardous. No MSDS required.

RESEARCH USE

For research use only, not for use in diagnostic procedures.

PROTOCOLS

See our web site at www.scbt.com for detailed protocols and support products.