

VPS26 (10L3): sc-135606

BACKGROUND

Vacuolar sorting proteins (VPSs) are required for proper trafficking of endocytic and biosynthetic proteins to the vacuole and play an important role in the budding process of cells. VPS26 (vacuolar protein sorting 26), also known as VPS26A, HB58 or PEP8A, is a 327 amino acid protein that localizes to both the cytoplasm and to the endosomal membrane and exists as a component of the multi-subunit retromer complex. Specifically, the retromer complex relies on a variety of proteins, including VPS26, VPS26B and VPS35, all of which are responsible for the retrograde transport of proteins from endosomes to the *trans*-Golgi network. VPS26 is expressed at high levels in heart, liver, kidney, placenta and skeletal muscle, where it plays an important role in protein trafficking. Multiple isoforms of VPS26 exist due to alternative splicing events.

REFERENCES

1. Mao, M., et al. 1998. Identification of genes expressed in human CD34⁺ hematopoietic stem/progenitor cells by expressed sequence tags and efficient full-length cDNA cloning. *Proc. Natl. Acad. Sci. USA* 95: 8175-8180.
2. Haft, C.R., et al. 2000. Human orthologs of yeast vacuolar protein sorting proteins VPS26, 29, and 35: assembly into multimeric complexes. *Mol. Biol. Cell* 11: 4105-4116.
3. Reddy, J.V. and Seaman, M.N. 2001. VPS26p, a component of retromer, directs the interactions of Vps35p in endosome-to-Golgi retrieval. *Mol. Biol. Cell* 12: 3242-3256.
4. Verges, M., et al. 2004. The mammalian retromer regulates transcytosis of the polymeric immunoglobulin receptor. *Nat. Cell Biol.* 6: 763-769.
5. Kerr, M.C., et al. 2005. A novel mammalian retromer component, VPS26B. *Traffic* 6: 991-1001.
6. Shi, H., et al. 2006. The retromer subunit VPS26 has an arrestin fold and binds VPS35 through its C-terminal domain. *Nat. Struct. Mol. Biol.* 13: 540-548.
7. Online Mendelian Inheritance in Man, OMIM™. 2006. Johns Hopkins University, Baltimore, MD. MIM Number: 605506. World Wide Web URL: <http://www.ncbi.nlm.nih.gov/omim/>
8. Rojas, R., et al. 2007. Interchangeable but essential functions of SNX1 and SNX2 in the association of retromer with endosomes and the trafficking of mannose 6-phosphate receptors. *Mol. Cell. Biol.* 27: 1112-1124.

CHROMOSOMAL LOCATION

Genetic locus: VPS26A (human) mapping to 10q22.1; Vps26a (mouse) mapping to 10 B4.

SOURCE

VPS26 (10L3) is a mouse monoclonal antibody raised against recombinant VPS26 protein of human origin.

PRODUCT

Each vial contains 100 µg IgG_{2a} kappa light chain in 1.0 ml of PBS with < 0.1% sodium azide and 0.1% gelatin.

APPLICATIONS

VPS26 (10L3) is recommended for detection of VPS26 of mouse, rat and human origin by Western Blotting (starting dilution 1:200, dilution range 1:100-1:1000), immunoprecipitation [1-2 µg per 100-500 µg of total protein (1 ml of cell lysate)] and solid phase ELISA (starting dilution 1:30, dilution range 1:30-1:3000).

Suitable for use as control antibody for VPS26 siRNA (h): sc-63220, VPS26 siRNA (m): sc-63221, VPS26 shRNA Plasmid (h): sc-63220-SH, VPS26 shRNA Plasmid (m): sc-63221-SH, VPS26 shRNA (h) Lentiviral Particles: sc-63220-V and VPS26 shRNA (m) Lentiviral Particles: sc-63221-V.

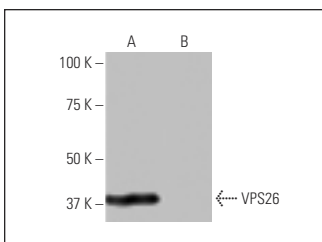
Molecular Weight of VPS26: 38 kDa.

Positive Controls: human platelet extract: sc-363773 or human VPS26 transfected 293T whole cell lysate.

RECOMMENDED SUPPORT REAGENTS

To ensure optimal results, the following support reagents are recommended: 1) Western Blotting: use m-IgGκ BP-HRP: sc-516102 or m-IgGκ BP-HRP (Cruz Marker): sc-516102-CM (dilution range: 1:1000-1:10000), Cruz Marker™ Molecular Weight Standards: sc-2035, UltraCruz® Blocking Reagent: sc-516214 and Western Blotting Luminol Reagent: sc-2048. 2) Immunoprecipitation: use Protein A/G PLUS-Agarose: sc-2003 (0.5 ml agarose/2.0 ml).

DATA



VPS26 (10L3): sc-135606. Western blot analysis of VPS26 expression in human VPS26 transfected (A) and non-transfected (B) 293T whole cell lysates.

STORAGE

Store at 4° C, **DO NOT FREEZE**. Stable for one year from the date of shipment. Non-hazardous. No MSDS required.

RESEARCH USE

For research use only, not for use in diagnostic procedures.

PROTOCOLS

See our web site at www.scbt.com for detailed protocols and support products.