

Neuregulin-1 (k1G13): sc-135811

BACKGROUND

The neuregulins are a family of ErbB/HER ligands encoded by four genes. Neuregulin-1 gene, NRG1, encodes numerous splice variants with differing transcription initiation sites. Neuregulin-1 includes a range of isoforms with varying glycosylation, regulation of expression and function. Neuregulin-1 splice variants each bear an EGF-like domain, though otherwise have unique domain structures, differing functions and discrete tissue distribution. Six types of Neuregulin-1 isoform groups have been defined based on their structural features. Three types are most often described, type I (ARIA, NDF or HRG), type II (GGF) and type III (SMDF). Neuregulin-1 has been linked to schizophrenia and has diverse neural functions. Neuregulin-1 affects cell migration, the differentiation of neural crest and Schwann cells, and acts to upregulate the expression of acetylcholine receptors at muscle fibers during the formation of neuromuscular junctions.

REFERENCES

1. Coussens, L., et al. 1985. Tyrosine kinase receptor with extensive homology to EGF receptor shares chromosomal location with Neu oncogene. *Science* 230: 1132-1139.
2. Holmes, W.E., et al. 1992. Identification of heregulin, a specific activator of p185 ErbB-4. *Science* 256: 1205-1210.
3. Marchionni, M.A., et al. 1993. Glial growth factors are alternatively spliced ErbB-2 ligands expressed in the nervous system. *Nature* 362: 312-318.
4. Meyer, D., et al. 1997. Isoform-specific expression and function of neuregulin. *Development* 124: 3575-3586.
5. Britsch, S., et al. 1998. The ErbB-2 and ErbB-3 receptors and their ligand, Neuregulin-1, are essential for development of the sympathetic nervous system. *Genes Dev.* 12: 1825-1836.
6. Osheroff, P.L., et al. 1999. Receptor binding and biological activity of mammalian expressed sensory and motor neuron-derived factor (SMDF). *Growth Factors* 16: 241-253.
7. Steinthorsdottir, V., et al. 2004. Multiple novel transcription initiation sites for NRG1. *Gene* 342: 97-105.
8. Petryshen, T.L., et al. 2005. Support for involvement of Neuregulin-1 in schizophrenia pathophysiology. *Mol. Psychiatry* 10: 366-374.
9. Li, D., et al. 2006. Meta-analysis shows strong positive association of the neuregulin 1 (NRG1) gene with schizophrenia. *Hum. Mol. Genet.* 15: 1995-2002.

CHROMOSOMAL LOCATION

Genetic locus: NRG1 (human) mapping to 8p12.

SOURCE

Neuregulin-1 (k1G13) is a mouse monoclonal antibody raised against a recombinant protein corresponding to amino acids 20-241 of Neuregulin-1 isoform HRG-β3 of human origin.

PRODUCT

Each vial contains 50 µg IgG₁ in 0.5 ml of PBS with < 0.1% sodium azide and 0.1% gelatin.

APPLICATIONS

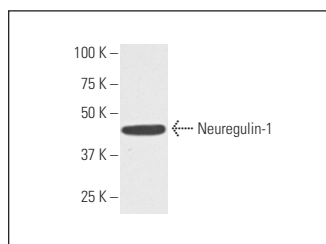
Neuregulin-1 (k1G13) is recommended for detection of Neuregulin-1 of human origin by Western Blotting (starting dilution 1:200, dilution range 1:100-1:1000), immunoprecipitation [1-2 µg per 100-500 µg of total protein (1 ml of cell lysate)] and solid phase ELISA (starting dilution 1:30, dilution range 1:30-1:3000).

Suitable for use as control antibody for Neuregulin-1 siRNA (h): sc-37210, Neuregulin-1 shRNA Plasmid (h): sc-37210-SH and Neuregulin-1 shRNA (h) Lentiviral Particles: sc-37210-V.

Molecular Weight of Neuregulin-1 isoforms: 26-71 kDa.

Positive Controls: A-431 whole cell lysate: sc-2201, A-673 cell lysate: sc-2414 or SK-N-MC cell lysate: sc-2237.

DATA



Neuregulin-1 (k1G13): sc-135811. Western blot analysis of Neuregulin-1 expression in 293T whole cell lysate.

STORAGE

Store at 4° C, ****DO NOT FREEZE****. Stable for one year from the date of shipment. Non-hazardous. No MSDS required.

RESEARCH USE

For research use only, not for use in diagnostic procedures.

PROTOCOLS

See our web site at www.scbt.com for detailed protocols and support products.



See **Neuregulin-1 (E-12): sc-393006** for Neuregulin-1 antibody conjugates, including AC, HRP, FITC, PE, and Alexa Fluor® 488, 546, 594, 647, 680 and 790.