

Cdc5L (21): sc-135863

BACKGROUND

Cdc5L (cell division cycle 5-like protein, *Pombe* Cdc5-related protein) is a DNA-binding protein encoded by the human gene CDC5L. Cdc5L contains two HTH Myb-type DNA-binding domains and may shuttle between cytoplasm and nucleus. It is involved in cell cycle control and may act as a transcription activator. Cdc5L is a spliceosomal protein that is highly conserved across species. It belongs to the group of proteins that comprise the core of spliceosomal complexes and are essential for pre-mRNA splicing. Cdc5L is involved in the second catalytic step of pre-mRNA splicing, which involves cleavage at the 3' splice site and the ligation of the exons. This process releases the intact intron lariat. A chromosomal aberration involving Cdc5L is found in multicystic renal dysplasia. This aberration is caused by a translocation (t 6;19,p21;q13.1) with USF-2.

REFERENCES

- Hirayama, T. and Shinozaki, K. 1996. A Cdc5⁺ homolog of a higher plant, *Arabidopsis thaliana*. Proc. Natl. Acad. Sci. USA 93: 13371-13376.
- Bernstein, H.S. and Coughlin, S.R. 1997. *Pombe* Cdc5-related protein. A putative human transcription factor implicated in mitogen-activated signaling. J. Biol. Chem. 272: 5833-5837.
- Groenen, P.M., Vanderlinden, G., Devriendt, K., Fryns, J.P. and Van de Ven, W.J. 1998. Rearrangement of the human CDC5L gene by a t(6;19)(p21;q13.1) in a patient with multicystic renal dysplasia. Genomics 49: 218-229.
- Ajuh, P., Kuster, B., Panov, K., Zomerdijk, J.C., Mann, M. and Lamond, A.I. 2000. Functional analysis of the human Cdc5L complex and identification of its components by mass spectrometry. EMBO J. 19: 6569-6581.
- Ajuh, P., Sleeman, J., Chusainow, J. and Lamond, A.I. 2001. A direct interaction between the carboxyl-terminal region of Cdc5L and the WD40 domain of PLRG1 is essential for pre-mRNA splicing. J. Biol. Chem. 276: 42370-42381.
- Jurica, M.S., Licklider, L.J., Gygi, S.R., Grigorieff, N. and Moore, M.J. 2002. Purification and characterization of native spliceosomes suitable for three-dimensional structural analysis. RNA 8: 426-439.
- Leonard, D., Ajuh, P., Lamond, A.I. and Legerski, R.J. 2003. hLodestar/HuF2 interacts with Cdc5L and is involved in pre-mRNA splicing. Biochem. Biophys. Res. Commun. 308: 793-801.

CHROMOSOMAL LOCATION

Genetic locus: CDC5L (human) mapping to 6p21.1; Cdc5l (mouse) mapping to 17 B3.

SOURCE

Cdc5L (21) is a mouse monoclonal antibody raised against amino acids 109-303 of Cdc5L of rat origin.

PRODUCT

Each vial contains 50 µg IgG₁ in 0.5 ml of PBS with < 0.1% sodium azide, 0.1% gelatin, 20% glycerol and 0.04% stabilizer protein.

APPLICATIONS

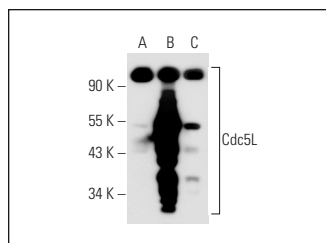
Cdc5L (21) is recommended for detection of Cdc5L of mouse, rat and human origin by Western Blotting (starting dilution 1:200, dilution range 1:100-1:1000), immunoprecipitation [1-2 µg per 100-500 µg of total protein (1 ml of cell lysate)] and immunofluorescence (starting dilution 1:50, dilution range 1:50-1:500).

Suitable for use as control antibody for Cdc5L siRNA (h): sc-62088, Cdc5L siRNA (m): sc-62089, Cdc5L shRNA Plasmid (h): sc-62088-SH, Cdc5L shRNA Plasmid (m): sc-62089-SH, Cdc5L shRNA (h) Lentiviral Particles: sc-62088-V and Cdc5L shRNA (m) Lentiviral Particles: sc-62089-V.

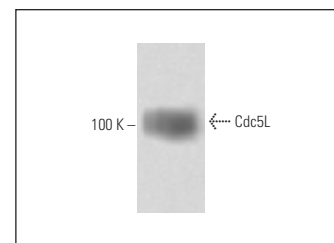
Molecular Weight of Cdc5L: 100 kDa.

Positive Controls: Cdc5L (m2): 293T Lysate: sc-119136, NIH/3T3 whole cell lysate: sc-2210 or HeLa whole cell lysate: sc-2200.

DATA



Cdc5L (21): sc-135863. Western blot analysis of Cdc5L expression in non-transfected 293T: sc-117752 (A), mouse Cdc5L transfected 293T: sc-119136 (B) and HeLa (C) whole cell lysates.



Cdc5L (21): sc-135863. Western blot analysis of Cdc5L expression in rat cerebrum tissue extract.

STORAGE

Store at 4° C, ****DO NOT FREEZE****. Stable for one year from the date of shipment. Non-hazardous. No MSDS required.

RESEARCH USE

For research use only, not for use in diagnostic procedures. Not for resale.

PROTOCOLS

See our web site at www.scbt.com for detailed protocols and support products.