

GIT2 (27): sc-135926

BACKGROUND

Heterotrimeric G protein-mediated signal transduction is a dynamically regulated process with the intensity of signal decreasing over time despite the continued presence of the agonist. G protein-coupled receptor kinases (GRKs) are activated by activated G protein-coupled receptors, and they function to phosphorylate and inactivate cell surface receptors in the heterotrimeric G protein signaling cascade. GIT1 (for GRK-interactor 1) and GIT2 are GTPase-activating proteins (GAP) for members of the ADP ribosylation factor (ARF) family of small GTP-binding proteins, which are involved in vesicular trafficking. GIT1 overexpression results in reduced internalization and resensitization of β_2 -adrenergic receptor, thus reducing β_2 -adrenergic receptor signaling.

REFERENCES

- Hausdorff, W.P., Caron, M.G. and Lefkowitz, R.J. 1990. Turning off the signal: desensitization of β -adrenergic receptor function. *FASEB J.* 4: 2881-2889.
- Pei, G., Tiberi, M., Caron, M.G. and Lefkowitz, R.J. 1994. An approach to the study of G protein-coupled receptor kinases: an *in vitro*-purified membrane assay reveals differential receptor specificity and regulation by $G_{\beta\gamma}$ subunits. *Proc. Natl. Acad. Sci. USA* 91: 3633-3636.
- Lefkowitz, R.J. 1998. G protein-coupled receptors. III. New roles for receptor kinases and β -arrestins in receptor signaling and desensitization. *J. Biol. Chem.* 273: 18677-18680.
- Pitcher, J.A., Freedman, N.J. and Lefkowitz, R.J. 1998. G protein-coupled receptor kinases. *Annu. Rev. Biochem.* 67: 653-692.
- Premont, R.T., Claing, A., Vitale, N., Freeman, J.L., Pitcher, J.A., Patton, W.A., Moss, J., Vaughan, M. and Lefkowitz, R.J. 1998. β_2 -adrenergic receptor regulation by GIT1, a G protein-coupled receptor kinase-associated ADP ribosylation factor GTPase-activating protein. *Proc. Natl. Acad. Sci. USA* 95: 14082-14087.
- Premont, R.T. and Lefkowitz, R.J. 2000. A second ARF GTPase-activating protein that interacts with GRKs. Functional diversity of GIT2 through alternative splicing. *J. Biol. Chem.* 275: 22373-22380.

CHROMOSOMAL LOCATION

Genetic locus: GIT2 (human) mapping to 12q24.11; Git2 (mouse) mapping to 5 F.

SOURCE

GIT2 (27) is a mouse monoclonal antibody raised against amino acids 1-471 corresponding to the short isoform of GIT2 of human origin.

PRODUCT

Each vial contains 50 μ g IgG₁ in 0.5 ml PBS with < 0.1% sodium azide and 0.1% gelatin.

STORAGE

Store at 4° C, ****DO NOT FREEZE****. Stable for one year from the date of shipment. Non-hazardous. No MSDS required.

APPLICATIONS

GIT2 (27) is recommended for detection of the short isoform of GIT2 of mouse, rat, human and canine origin by Western Blotting (starting dilution 1:200, dilution range 1:100-1:1000), immunoprecipitation [1-2 μ g per 100-500 μ g of total protein (1 ml of cell lysate)] and immunofluorescence (starting dilution 1:50, dilution range 1:50-1:500).

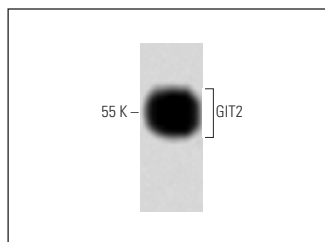
Suitable for use as control antibody for GIT2 siRNA (h): sc-40637, GIT2 siRNA (m): sc-40636, GIT2 shRNA Plasmid (h): sc-40637-SH, GIT2 shRNA Plasmid (m): sc-40636-SH, GIT2 shRNA (h) Lentiviral Particles: sc-40637-V and GIT2 shRNA (m) Lentiviral Particles: sc-40636-V.

Molecular Weight of GIT2 short isoform: 55 kDa.

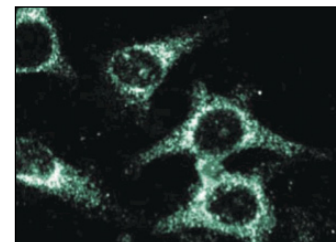
Molecular Weight of GIT2 long isoform: 85 kDa.

Positive Controls: Jurkat whole cell lysate: sc-2204.

DATA



GIT2 (27): sc-135926. Western blot analysis of GIT2 expression in Jurkat whole cell lysate.



GIT2 (27): sc-135926. Immunofluorescence staining of HeLa cells showing cytoplasmic localization.

SELECT PRODUCT CITATIONS

- Bao, M., Liu, G., Song, J. and Gao, Y. 2020. Long non-coding RNA MALAT1 promotes odontogenic differentiation of human dental pulp stem cells by impairing microRNA-140-5p-dependent downregulation of GIT2. *Cell Tissue Res.* 8: e58342.

RESEARCH USE

For research use only, not for use in diagnostic procedures. Not for resale.

PROTOCOLS

See our web site at www.scbt.com for detailed protocols and support products.