

# 52 kDa Ro/SSA (h): 293T Lysate: sc-158201

## ACKGROUND

Ro autoantigens are of clinical significance because antibodies directed against them are found in most patients with primary Sjogren syndrome, subacute cutaneous lupus erythematosus (SLE), neonatal lupus erythematosus, ANA-negative lupus erythematosus and systemic lupus erythematosus-like disease secondary to homozygous C2 or C4 complement deficiency. Ro/SSA is a ribonucleoprotein that binds to autoantibodies in 35 to 50% of patients with SLE and in up to 97% of patients with Sjogren syndrome. The Ro/SSA particle consists of a single immunoreactive protein noncovalently bound with one of four small RNA molecules. Most anti-Ro/SSA-positive sera have antibodies not only against the immunoreactive protein, but also against an Ro/SSA protein. La/SSB is an autoimmune RNA-binding protein that plays a role in the transcription of RNA polymerase III was originally defined by its reactivity with autoantibodies from patients with Sjogren syndrome and SLE.

## REFERENCES

1. Chambers, J.C., et al. 1988. Genomic structure and amino acid sequence domains of the human La autoantigen. *J. Biol. Chem.* 263: 18043-18051.
2. Itoh, K., et al. 1991. Protein heterogeneity in the human Ro/SSA ribonucleoproteins. The 52 and 60 kDa Ro/SSA autoantigens are encoded by separate genes. *J. Clin. Invest.* 87: 177-186.
3. Frank, M.B., et al. 1993. The mapping of the human 52 kDa Ro/SSA autoantigen gene to human chromosome 11, and its polymorphisms. *Am. J. Hum. Genet.* 52: 183-191.
4. Chan, E.K., et al. 1994. Human 60 kDa SSA/Ro ribonucleoprotein autoantigen gene (SSA2) localized to 1q31 by fluorescence *in situ* hybridization. *Genomics* 23: 298-300.

## CHROMOSOMAL LOCATION

Genetic locus: TRIM21 (human) mapping to 11p15.4.

## PRODUCT

52 kDa Ro/SSA (h): 293T Lysate represents a lysate of human 52 kDa Ro/SSA transfected 293T cells and is provided as 100 µg protein in 200 µl SDS-PAGE buffer.

## RESEARCH USE

For research use only, not for use in diagnostic procedures.

## APPLICATIONS

52 kDa Ro/SSA (h): 293T Lysate is suitable as a Western Blotting positive control for human reactive 52 kDa Ro/SSA antibodies. Recommended use: 10-20 µl per lane.

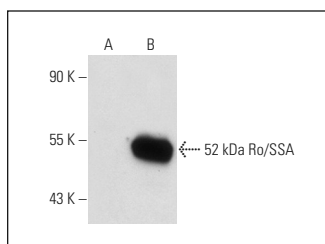
Control 293T Lysate: sc-117752 is available as a Western Blotting negative control lysate derived from non-transfected 293T cells.

52 kDa Ro/SSA (E-11): sc-48430 is recommended as a positive control antibody for Western Blot analysis of enhanced human 52 kDa Ro/SSA expression in 52 kDa Ro/SSA transfected 293T cells (starting dilution 1:100, dilution range 1:100-1:1,000).

## RECOMMENDED SUPPORT REAGENTS

To ensure optimal results, the following support reagents are recommended:  
1) Western Blotting: use m-IgGκ BP-HRP: sc-516102 or m-IgGκ BP-HRP (Cruz Marker): sc-516102-CM (dilution range: 1:1000-1:10000), Cruz Marker™ Molecular Weight Standards: sc-2035, UltraCruz® Blocking Reagent: sc-516214 and Western Blotting Luminol Reagent: sc-2048.

## DATA



52 kDa Ro/SSA (E-11): sc-48430. Western blot analysis of 52 kDa Ro/SSA expression in non-transfected: sc-117752 (A) and human 52 kDa Ro/SSA transfected: sc-158201 (B) 293T whole cell lysates.

## STORAGE

Store at -20° C. Repeated freezing and thawing should be minimized. Sample vial should be boiled once prior to use. Non-hazardous. No MSDS required.

## PROTOCOLS

See our web site at [www.scbt.com](http://www.scbt.com) for detailed protocols and support products.