

Cdc2 p34 (F-10): sc-166135

BACKGROUND

In vertebrates, as in yeast, multiple cyclins have been identified, including a total of eight such regulatory proteins in mammals. In contrast to the situation in yeast, the Cdc2 p34 kinase is not the only catalytic subunit identified in vertebrates that can interact with cyclins. While Cdc2 p34 is essential for the G₂/M transition in vertebrate cells, a second Cdc2-related kinase has also been implicated in cell cycle control. This protein, designated cyclin-dependent kinase 2 (Cdk2) p33, also binds to cyclins and its kinase activity is temporally regulated during the cell cycle. Several additional Cdc2 p34-related cyclin dependent kinases have been identified. These include Cdk3, Cdk4, Cdk5, PCTAIRE-1, PCTAIRE-2, PCTAIRE-3, Cdk6, Cdk7, Cdk8 and KIALRE.

REFERENCES

1. Riabowol, K., et al. 1989. The Cdc2 kinase is a nuclear protein that is essential for mitosis in mammalian cells. *Cell* 57: 393-401.
2. Morla, A.O., et al. 1989. Reversible tyrosine phosphorylation of Cdc2: dephosphorylation accompanies activation during entry into mitosis. *Cell* 58: 193-203.

CHROMOSOMAL LOCATION

Genetic locus: CDK1 (human) mapping to 10q21.2; Cdk1 (mouse) mapping to 10 B5.3.

SOURCE

Cdc2 p34 (F-10) is a mouse monoclonal antibody raised against amino acids 1-297 representing full length Cdc2 p34 of human origin.

PRODUCT

Each vial contains 200 µg IgG₁ kappa light chain in 1.0 ml of PBS with < 0.1% sodium azide and 0.1% gelatin.

APPLICATIONS

Cdc2 p34 (F-10) is recommended for detection of Cdc2 p34 of mouse, rat and human origin by Western Blotting (starting dilution 1:100, dilution range 1:100-1:1000), immunoprecipitation [1-2 µg per 100-500 µg of total protein (1 ml of cell lysate)], immunofluorescence (starting dilution 1:50, dilution range 1:50-1:500), immunohistochemistry (including paraffin-embedded sections) (starting dilution 1:50, dilution range 1:50-1:500) and solid phase ELISA (starting dilution 1:30, dilution range 1:30-1:3000).

Suitable for use as control antibody for Cdc2 p34 siRNA (h): sc-29252, Cdc2 p34 siRNA (m): sc-29253, Cdc2 p34 shRNA Plasmid (h): sc-29252-SH, Cdc2 p34 shRNA Plasmid (m): sc-29253-SH, Cdc2 p34 shRNA (h) Lentiviral Particles: sc-29252-V and Cdc2 p34 shRNA (m) Lentiviral Particles: sc-29253-V.

Molecular Weight of Cdc2 p34: 34 kDa.

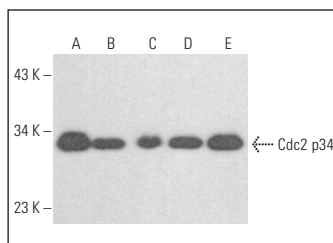
Positive Controls: K-562 whole cell lysate: sc-2203, BJAB whole cell lysate: sc-2207 or MCF7 whole cell lysate: sc-2206.

RECOMMENDED SUPPORT REAGENTS

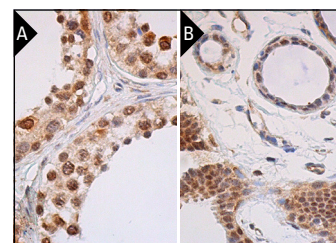
To ensure optimal results, the following support reagents are recommended:

- 1) Western Blotting: use m-IgGκ BP-HRP: sc-516102 or m-IgGκ BP-HRP (Cruz Marker): sc-516102-CM (dilution range: 1:1000-1:10000), Cruz Marker™ Molecular Weight Standards: sc-2035, UltraCruz® Blocking Reagent: sc-516214 and Western Blotting Luminol Reagent: sc-2048.
- 2) Immunoprecipitation: use Protein A/G PLUS-Agarose: sc-2003 (0.5 ml agarose/2.0 ml).
- 3) Immunofluorescence: use m-IgGκ BP-FITC: sc-516140 or m-IgGκ BP-PE: sc-516141 (dilution range: 1:50-1:200) with UltraCruz® Mounting Medium: sc-24941 or UltraCruz® Hard-set Mounting Medium: sc-359850.
- 4) Immunohistochemistry: use m-IgGκ BP-HRP: sc-516102 with DAB, 50X: sc-24982 and Immunohistomount: sc-45086, or Organo/Limonene Mount: sc-45087.

DATA



Cdc2 p34 (F-10): sc-166135. Western blot analysis of Cdc2 p34 expression in K-562 (A), NAMALWA (B), PC-3 (C), MCF7 (D) and BJAB (E) whole cell lysates.



Cdc2 p34 (F-10): sc-166135. Immunoperoxidase staining of formalin fixed, paraffin-embedded human testis tissue showing nuclear and cytoplasmic staining of cells in seminiferous ducts (A) and human breast tissue showing nuclear and cytoplasmic staining of glandular cells and myoepithelial cells (B).

SELECT PRODUCT CITATIONS

1. Sung, W.W., et al. 2014. High nuclear/cytoplasmic ratio of Cdk1 expression predicts poor prognosis in colorectal cancer patients. *BMC Cancer* 14: 951.
2. Helland, O., et al. 2016. The HDACi panobinostat shows growth inhibition both *in vitro* and in a bioluminescent orthotopic surgical xenograft model of ovarian cancer. *PLoS ONE* 11: e0158208.

STORAGE

Store at 4° C, **DO NOT FREEZE**. Stable for one year from the date of shipment. Non-hazardous. No MSDS required.

RESEARCH USE

For research use only, not for use in diagnostic procedures.

PROTOCOLS

See our web site at www.scbt.com for detailed protocols and support products.



See **Cdc2 p34 (17): sc-54** for Cdc2 p34 antibody conjugates, including AC, HRP, FITC, PE, and Alexa Fluor® 488, 546, 594, 647, 680 and 790.