

MAD1 (D-5): sc-166313

BACKGROUND

Cell cycle progression is subject to arrest at the mitotic spindle assembly checkpoint in response to incorrect spindle fiber assembly. MAD1 and MAD2 (for mitotic arrest-deficient 1 and 2) are components of the mitotic spindle checkpoint. Incorrect spindle assembly in normal cells leads to mitotic arrest. MAD1 prevents the onset of anaphase until all chromosomes are aligned correctly at the metaphase plate and is crucial for anchoring MAD2L1 to the nuclear periphery. It also plays an important role in septum positioning. MAD1 can form a homo-dimer, but may also form a heterodimer with MAD2 to form the tetrameric MAD1L1-MAD2L1 core complex. MAD1 localizes primarily to the nucleus, but during mitosis, it moves from a nuclear distribution to the centrosome, to the spindle midzone and then on to the midbody. MAD1 activity is induced by BUB1 and the protein is hyperphosphorylated after mitotic spindle damage and/or in late S through M phase. Defects in the gene encoding for MAD1, MAD1L1, play a major role in the development and progression of various cancer types.

REFERENCES

1. Jones, N. 1990. Transcriptional regulation by dimerization: two sides to an incestuous relationship. *Cell* 61: 9-11.
2. Dang, C.V., et al. 1991. Intracellular leucine zipper interactions suggest c-Myc hetero-oligomerization. *Mol. Cell. Biol.* 11: 954-962.
3. Blackwood, E.M. and Eisenman, R.N. 1991. Max: a helix-loop-helix zipper protein that forms a sequence-specific DNA-binding complex with Myc. *Science* 251: 1211-1217.
4. Prendergast, G.C., et al. 1991. Association of Myn, the murine homolog of Max, with c-Myc stimulates methylation-sensitive DNA binding and Ras cotransformation. *Cell* 65: 395-407.
5. Amati, B., et al. 1992. Oncogenic activity of the c-Myc protein requires dimerization with Max. *Cell* 72: 233-245.
6. Mukherjee, B., et al. 1992. Myc family oncoproteins function through a common pathway to transform normal cells in culture: cross-interference by Max and transacting dominant mutants. *Genes Dev.* 6: 1480-1492.

CHROMOSOMAL LOCATION

Genetic locus: MAD1L1 (human) mapping to 7p22.3; Mad1l1 (mouse) mapping to 5 G2.

SOURCE

MAD1 (D-5) is a mouse monoclonal antibody raised against amino acids 491-718 mapping at the C-terminus of MAD1 of human origin.

PRODUCT

Each vial contains 200 µg IgG_{2a} kappa light chain in 1.0 ml of PBS with < 0.1% sodium azide and 0.1% gelatin.

STORAGE

Store at 4° C, **DO NOT FREEZE**. Stable for one year from the date of shipment. Non-hazardous. No MSDS required.

APPLICATIONS

MAD1 (D-5) is recommended for detection of MAD1 of mouse, rat and human origin by Western Blotting (starting dilution 1:100, dilution range 1:100-1:1000), immunoprecipitation [1-2 µg per 100-500 µg of total protein (1 ml of cell lysate)], immunofluorescence (starting dilution 1:50, dilution range 1:50-1:500) and solid phase ELISA (starting dilution 1:30, dilution range 1:30-1:3000).

Suitable for use as control antibody for MAD1 siRNA (h): sc-62577, MAD1 siRNA (m): sc-62578, MAD1 shRNA Plasmid (h): sc-62577-SH, MAD1 shRNA Plasmid (m): sc-62578-SH, MAD1 shRNA (h) Lentiviral Particles: sc-62577-V and MAD1 shRNA (m) Lentiviral Particles: sc-62578-V.

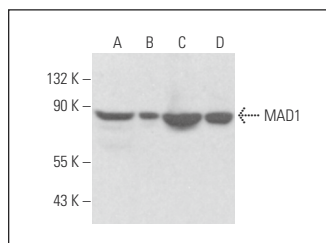
Molecular Weight of MAD1: 90 kDa.

Positive Controls: HeLa whole cell lysate: sc-2200, A-431 nuclear extract: sc-2122 or MAD1 (h): 293T Lysate: sc-177504.

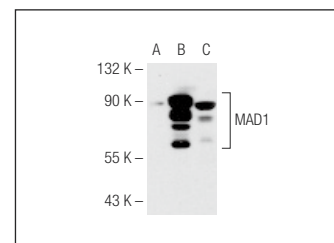
RECOMMENDED SUPPORT REAGENTS

To ensure optimal results, the following support reagents are recommended: 1) Western Blotting: use m-IgGκ BP-HRP: sc-516102 or m-IgGκ BP-HRP (Cruz Marker): sc-516102-CM (dilution range: 1:1000-1:10000), Cruz Marker™ Molecular Weight Standards: sc-2035, UltraCruz® Blocking Reagent: sc-516214 and Western Blotting Luminol Reagent: sc-2048. 2) Immunoprecipitation: use Protein A/G PLUS-Agarose: sc-2003 (0.5 ml agarose/2.0 ml). 3) Immunofluorescence: use m-IgGκ BP-FITC: sc-516140 or m-IgGκ BP-PE: sc-516141 (dilution range: 1:50-1:200) with UltraCruz® Mounting Medium: sc-24941 or UltraCruz® Hard-set Mounting Medium: sc-359850.

DATA



MAD1 (D-5): sc-166313. Western blot analysis of MAD1 expression in HeLa (A) and MEG-01 (B) whole cell lysates and A-431 (C) and BJAB (D) nuclear extracts.



MAD1 (D-5): sc-166313. Western blot analysis of MAD1 expression in non-transfected 293T: sc-117752 (A), human MAD1 transfected 293T: sc-177504 (B) and HeLa (C) whole cell lysates.

RESEARCH USE

For research use only, not for use in diagnostic procedures.



See **MAD1 (D-1): sc-166312** for MAD1 antibody conjugates, including AC, HRP, FITC, PE, and Alexa Fluor® 488, 546, 594, 647, 680 and 790.