

# CA II (D-11): sc-166569

## BACKGROUND

Carbonic anhydrases (CAs) are members of a large family of zinc metallo-enzymes that catalyze the reversible hydration of carbon dioxide. CAs are involved in a variety of biological processes, including respiration, calcification, acid-base balance, bone resorption, and the formation of aqueous humor, cerebrospinal fluid, saliva and gastric juice. They show extensive diversity in distribution and in their subcellular localization. The human CA2 gene, which maps to chromosome 8q21.2, encodes CA II, a cytoplasmic protein that has the highest turnover rate and widest tissue distribution of any known human CA isozyme. The human CA4 gene, which maps to chromosome 17q23, encodes CA IV, a membrane-anchored isozyme that is expressed on the luminal surfaces of pulmonary capillaries and proximal renal tubules. The human CA9, CA12 and CA14 genes, which map to chromosomes 9p13.3, 15q22 and 1q21, respectively, encode transmembrane proteins that have unique patterns of tissue-specific expression. CA IX is specifically expressed in clear-cell renal carcinomas, whereas CA XII is highly expressed in normal tissues, such as kidney, colon and pancreas. Human CA XIV is also expressed in normal tissues, such as brain, but differs from CA XII in its expression pattern.

## CHROMOSOMAL LOCATION

Genetic locus: Car2 (mouse) mapping to 3 A1.

## SOURCE

CA II (D-11) is a mouse monoclonal antibody specific for an epitope mapping between amino acids 20-50 near the N-terminus of CA II of mouse origin.

## PRODUCT

Each vial contains 200 µg IgG<sub>2b</sub> kappa light chain in 1.0 ml of PBS with < 0.1% sodium azide and 0.1% gelatin.

Blocking peptide available for competition studies, sc-166569 P, (100 µg peptide in 0.5 ml PBS containing < 0.1% sodium azide and 0.2% stabilizer protein).

## RESEARCH USE

For research use only, not for use in diagnostic procedures.

## APPLICATIONS

CA II (D-11) is recommended for detection of CA II of mouse and rat origin by Western Blotting (starting dilution 1:100, dilution range 1:100-1:1000), immunoprecipitation [1-2 µg per 100-500 µg of total protein (1 ml of cell lysate)], immunofluorescence (starting dilution 1:50, dilution range 1:50-1:500), immunohistochemistry (including paraffin-embedded sections) (starting dilution 1:50, dilution range 1:50-1:500) and solid phase ELISA (starting dilution 1:30, dilution range 1:30-1:3000).

Suitable for use as control antibody for CA II siRNA (m): sc-29866, CA II shRNA Plasmid (m): sc-29866-SH and CA II shRNA (m) Lentiviral Particles: sc-29866-V.

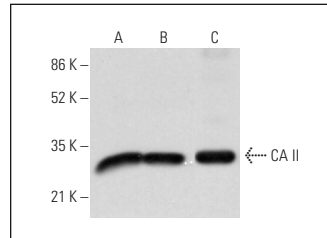
Molecular Weight of CA II: 29 kDa.

Positive Controls: mouse kidney extract: sc-2255, mouse placenta extract: sc-364247 or mouse spleen extract: sc-2391.

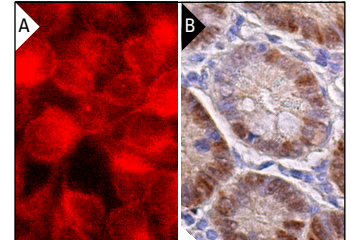
## RECOMMENDED SUPPORT REAGENTS

To ensure optimal results, the following support reagents are recommended: 1) Western Blotting: use m-IgGκ BP-HRP: sc-516102 or m-IgGκ BP-HRP (Cruz Marker): sc-516102-CM (dilution range: 1:1000-1:10000), Cruz Marker™ Molecular Weight Standards: sc-2035, UltraCruz® Blocking Reagent: sc-516214 and Western Blotting Luminol Reagent: sc-2048. 2) Immunoprecipitation: use Protein A/G PLUS-Agarose: sc-2003 (0.5 ml agarose/2.0 ml). 3) Immunofluorescence: use m-IgGκ BP-FITC: sc-516140 or m-IgGκ BP-PE: sc-516141 (dilution range: 1:50-1:200) with UltraCruz® Mounting Medium: sc-24941 or UltraCruz® Hard-set Mounting Medium: sc-359850. 4) Immunohistochemistry: use m-IgGκ BP-HRP: sc-516102 with DAB, 50X: sc-24982 and Immunohistomount: sc-45086, or Organo/Limonene Mount: sc-45087.

## DATA



CA II (D-11): sc-166569. Western blot analysis of CA II expression in mouse kidney (A), mouse spleen (B) and mouse placenta (C) tissue extracts.



CA II (D-11): sc-166569. Immunofluorescence staining of methanol-fixed HeLa cells showing cytoplasmic localization (A). Immunoperoxidase staining of formalin fixed, paraffin-embedded human duodenum tissue showing cytoplasmic and nuclear staining of glandular cells (B).

## SELECT PRODUCT CITATIONS

1. Witwicka, H., et al. 2015. TRAFD1 (FLN29) interacts with Plekhm1 and regulates osteoclast acidification and resorption. PLoS ONE 10: e0127537.

## STORAGE

Store at 4° C, \*\*DO NOT FREEZE\*\*. Stable for one year from the date of shipment. Non-hazardous. No MSDS required.

## PROTOCOLS

See our web site at [www.scbt.com](http://www.scbt.com) for detailed protocols and support products.



See **CA II (G-2): sc-48351** for CA II antibody conjugates, including AC, HRP, FITC, PE, and Alexa Fluor® 488, 546, 594, 647, 680 and 790.