

# Syntaxin 1 (C-5): sc-17836

## BACKGROUND

Correct vesicular transport is essential to the survival of eukaryotic cells. This process is determined by specific pairing of vesicle-associated SNAREs (v-SNAREs) with those on the target membrane (t-SNAREs). This complex then recruits soluble NSF attachment proteins (SNAPs) and N-ethylmaleimide-sensitive factor (NSF) to form the highly stable SNAP receptor (SNARE) complex. The formation of a SNARE complex pulls the vesicle and target membrane together and may provide the energy to drive fusion of the lipid bilayers. SNAPs, including  $\alpha$ - and  $\gamma$ -SNAP, are cytoplasmic proteins that bind to a membrane receptor complex composed of VAMP, SNAP 25 and Syntaxin 1. Syntaxins, including Syntaxin 1, comprise a family of proteins involved in the fusion of synaptic vesicles with the plasma membrane. The Syntaxin family displays broad tissue distribution and contains C-terminal hydrophobic domains that direct them to their respective intracellular compartments.

## REFERENCES

1. Elferink, L.A., Peterson, M.R. and Scheller, R.H. 1993. A role for Synaptotagmin (p65) in regulated exocytosis. *Cell* 72: 153-159.
2. Bennett, M.K., Garcia-Ararras, J.E., Elferink, L.A., Peterson, K., Fleming, A.M., Hazuka, C.D. and Scheller, R.H. 1993. The Syntaxin family of vesicular transport receptors. *Cell* 74: 863-873.
3. Yamaguchi, K. and Akagawa, K. 1994. Exocytosis relating proteins in the nervous system. *Neurosci. Res.* 20: 289-292.
4. Hayashi, T., McMahon, H., Yamasaki, S., Binz, T., Hata, Y., Sudhof, T.C. and Niemann, H. 1994. Synaptic vesicle membrane fusion complex: action of clostridial neurotoxins on assembly. *EMBO J.* 13: 5051-5061.
5. Edelman, L., Hanson, P.I., Chapman, E.R. and Jahn, R. 1995. Synaptobrevin binding to synaptophysin: a potential mechanism for controlling the exocytosis fusion machine. *EMBO J.* 14: 224-231.
6. McMahon, H.T. and Sudhof, T.C. 1995. Synaptic core complex of synaptobrevin, Syntaxin and SNAP25 forms high affinity  $\alpha$ -SNAP binding site. *J. Biol. Chem.* 270: 2213-2217.
7. Lin, R.C. and Scheller, R.H. 1997. Structural organization of the synaptic exocytosis core complex. *Neuron* 19: 1087-1094.

## CHROMOSOMAL LOCATION

Genetic locus: STX1A (human) mapping to 7q11.23, STX1B (human) mapping to 16p11.2; Stx1a (mouse) mapping to 5 G2, Stx1b (mouse) mapping to 7 F2.

## SOURCE

Syntaxin 1 (C-5) is a mouse monoclonal antibody raised against amino acids 3-225 of Syntaxin 1A of human origin.

## PRODUCT

Each vial contains 200  $\mu$ g IgG<sub>1</sub> kappa light chain in 1.0 ml of PBS with < 0.1% sodium azide and 0.1% gelatin.

## RESEARCH USE

For research use only, not for use in diagnostic procedures.

## APPLICATIONS

Syntaxin 1 (C-5) is recommended for detection of Syntaxin 1A and Syntaxin 1B of mouse, rat and human origin by Western Blotting (starting dilution 1:100, dilution range 1:100-1:1,000), immunoprecipitation [1-2  $\mu$ g per 100-500  $\mu$ g of total protein (1 ml of cell lysate)], immunofluorescence (starting dilution 1:50, dilution range 1:50-1:500) and solid phase ELISA (starting dilution 1:30, dilution range 1:30-1:3000); may cross-react with other Syntaxin family members.

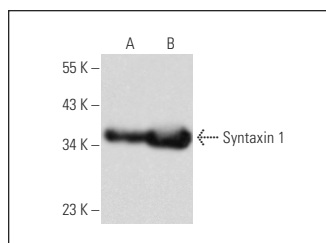
Molecular Weight of Syntaxin 1: 35 kDa.

Positive Controls: mouse brain extract: sc-2253, human brain extract: sc-364375 or human cerebral cortex extract: sc-516707.

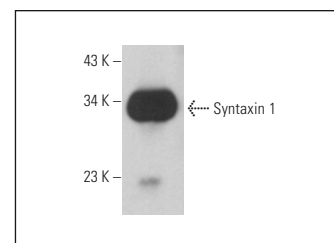
## RECOMMENDED SUPPORT REAGENTS

To ensure optimal results, the following support reagents are recommended: 1) Western Blotting: use m-IgG $\kappa$  BP-HRP: sc-516102 or m-IgG $\kappa$  BP-HRP (Cruz Marker): sc-516102-CM (dilution range: 1:1000-1:10000), Cruz Marker<sup>™</sup> Molecular Weight Standards: sc-2035, UltraCruz<sup>®</sup> Blocking Reagent: sc-516214 and Western Blotting Luminol Reagent: sc-2048. 2) Immunoprecipitation: use Protein A/G PLUS-Agarose: sc-2003 (0.5 ml agarose/2.0 ml). 3) Immunofluorescence: use m-IgG $\kappa$  BP-FITC: sc-516140 or m-IgG $\kappa$  BP-PE: sc-516141 (dilution range: 1:50-1:200) with UltraCruz<sup>®</sup> Mounting Medium: sc-24941 or UltraCruz<sup>®</sup> Hard-set Mounting Medium: sc-359850.

## DATA



Syntaxin 1 (C-5): sc-17836. Western blot analysis of Syntaxin 1 expression in human brain (A) and human cerebral cortex (B) tissue extracts.



Syntaxin 1 (C-5): sc-17836. Western blot analysis of Syntaxin 1 expression in mouse brain tissue extract.

## STORAGE

Store at 4° C, **\*\*DO NOT FREEZE\*\***. Stable for one year from the date of shipment. Non-hazardous. No MSDS required.

## PROTOCOLS

See our web site at [www.scbt.com](http://www.scbt.com) for detailed protocols and support products.



See **Syntaxin 1 (HPC-1): sc-12736** for Syntaxin 1 antibody conjugates, including AC, HRP, FITC, PE, and Alexa Fluor<sup>®</sup> 488, 546, 594, 647, 680 and 790.