

LAMP-2 (H4B4): sc-18822

BACKGROUND

Lysosome-associated membrane proteins (LAMP) are glycosylated type I membrane proteins that play a role in the biogenesis of the pigment melanin. LAMP-1 (also designated CD107A) and LAMP-2 (also designated CD107B) are involved in a variety of functions, including cellular adhesion, and are thought to participate in the process of tumor invasion and metastasis. Newly synthesized LAMP-1 and LAMP-2 proteins are sorted at the *trans*-Golgi network and are transported intracellularly via a pathway that is distinct from the clathrin-coated vesicles used for the mannose-6 phosphate receptor. LAMP-1 is expressed on the surface of Thrombin-activated but not resting platelets, and it is thought to be involved in the adhesive, prothrombic properties of these cells. Both LAMP-1 and LAMP-2 are involved in maintaining lysosome acidity and protecting the lysosomal membranes from autodigestion, and their expression is increased in patients with lysosomal storage disorders.

CHROMOSOMAL LOCATION

Genetic locus: LAMP2 (human) mapping to Xq24.

SOURCE

LAMP-2 (H4B4) is a mouse monoclonal antibody raised against adherent spleen cells of human origin.

PRODUCT

Each vial contains 200 µg IgG₁ kappa light chain in 1.0 ml of PBS with < 0.1% sodium azide and 0.1% gelatin.

LAMP-2 (H4B4) is available conjugated to agarose (sc-18822 AC), 500 µg/0.25 ml agarose in 1 ml, for IP; to HRP (sc-18822 HRP), 200 µg/ml, for WB, IHC(P) and ELISA; to either phycoerythrin (sc-18822 PE), fluorescein (sc-18822 FITC), Alexa Fluor® 488 (sc-18822 AF488), Alexa Fluor® 546 (sc-18822 AF546), Alexa Fluor® 594 (sc-18822 AF594) or Alexa Fluor® 647 (sc-18822 AF647), 200 µg/ml, for WB (RGB), IF, IHC(P) and FCM; and to either Alexa Fluor® 680 (sc-18822 AF680) or Alexa Fluor® 790 (sc-18822 AF790), 200 µg/ml, for Near-Infrared (NIR) WB, IF and FCM.

In addition, LAMP-2 (H4B4) is available conjugated to Alexa Fluor® 405 (sc-18822 AF405, 200 µg/ml), for IF, IHC(P) and FCM.

APPLICATIONS

LAMP-2 (H4B4) is recommended for detection of LAMP-2 of human origin by Western Blotting (starting dilution 1:200, dilution range 1:100-1:1000), immunoprecipitation [1-2 µg per 100-500 µg of total protein (1 ml of cell lysate)], immunofluorescence (starting dilution 1:50, dilution range 1:50-1:500), immunohistochemistry (including paraffin-embedded sections) (starting dilution 1:50, dilution range 1:50-1:500) and flow cytometry (1 µg per 1 x 10⁶ cells).

Suitable for use as control antibody for LAMP-2 siRNA (h): sc-29390, LAMP-2 shRNA Plasmid (h): sc-29390-SH and LAMP-2 shRNA (h) Lentiviral Particles: sc-29390-V.

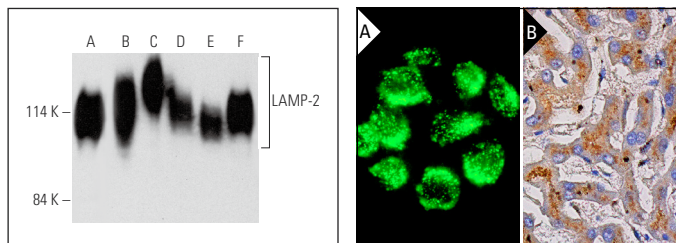
Molecular Weight of LAMP-2: 120 kDa.

Positive Controls: HeLa whole cell lysate: sc-2200, Jurkat whole cell lysate: sc-2204 or Ramos cell lysate: sc-2216.

STORAGE

Store at 4° C, ****DO NOT FREEZE****. Stable for one year from the date of shipment. Non-hazardous. No MSDS required.

DATA



LAMP-2 (H4B4) HRP: sc-18822 HRP. Direct western blot analysis of LAMP-2 expression in HeLa (A), ECV304 (B), U-937 (C), Jurkat (D), Ramos (E) and HUV-EC-C (F) whole cell lysates.

LAMP-2 (H4B4): sc-18822. Immunofluorescence staining of methanol-fixed HeLa cells showing membrane staining (A). LAMP-2 (H4B4) HRP: sc-18822 HRP. Direct immunoperoxidase staining of formalin fixed, paraffin-embedded human liver tissue showing cytoplasmic staining of hepatocytes (B).

SELECT PRODUCT CITATIONS

- Clayton, A., et al. 2005. Induction of heat shock proteins in B cell exosomes. *J. Cell Sci.* 118: 3631-3638.
- Nezich, C.L., et al. 2015. MiT/TFE transcription factors are activated during mitophagy downstream of Parkin and Atg5. *J. Cell Biol.* 210: 435-450.
- Kerviel, A., et al. 2016. Involvement of an arginine triplet in M1 matrix protein interaction with membranes and in M1 recruitment into virus-like particles of the influenza A(H1N1)pdm09 virus. *PLoS ONE* 11: e0165421.
- Wolfson, R.L., et al. 2017. KICSTOR recruits GATOR1 to the lysosome and is necessary for nutrients to regulate mTORC1. *Nature* 543: 438-442.
- Ouchida, A.T., et al. 2018. Synergistic effect of a novel autophagy inhibitor and quizartinib enhances cancer cell death. *Cell Death Dis.* 9: 138.
- Kim, H., et al. 2019. Calcium chloride enhances the delivery of exosomes. *PLoS ONE* 14: e0220036.
- Yamaguchi, I., et al. 2020. High cell density increases glioblastoma cell viability under glucose deprivation via degradation of the cystine/glutamate transporter xCT (SLC7A11). *J. Biol. Chem.* 295: 6936-6945.
- Abokyi, S., et al. 2021. Targeting lysosomes to reverse hydroquinone-Induced autophagy defects and oxidative damage in human retinal pigment epithelial cells. *Int. J. Mol. Sci.* 22: 9042.
- Rong, Y., et al. 2022. STING controls energy stress-induced autophagy and energy metabolism via STX17. *J. Cell Biol.* 221: e202202060.
- Liu, X., et al. 2023. ARIH1 activates STING-mediated T-cell activation and sensitizes tumors to immune checkpoint blockade. *Nat. Commun.* 14: 4066.

RESEARCH USE

For research use only, not for use in diagnostic procedures.

Alexa Fluor® is a trademark of Molecular Probes, Inc., Oregon, USA