

E-Selectin (P2H3): sc-18840

BACKGROUND

Selectins, also designated CD62 antigens, comprise a family of carbohydrate-binding proteins involved in mediating cellular interactions with leukocytes. L-Selectin (also designated LECAM-1 or CD62L) is expressed on the majority of B and naive T cells and on most monocytes, neutrophils and eosinophils. L-Selectin interacts with specific carbohydrates expressed by activated endothelial cells. P-Selectin (also designated GMP-140 or CD62P), expressed on activated platelets and endothelial cells, and E-Selectin (also designated ELMA-1 or CD62E), expressed on endothelial cells, exhibit overlapping ligand specificities. E-Selectin is expressed by cytokine-stimulated endothelial cells and is thought to be responsible for the accumulation of blood leukocytes at sites of inflammation by mediating the adhesion of cells to the vascular lining.

REFERENCES

1. Varki, A. 1994. Selectin ligands. *Proc. Natl. Acad. Sci. USA* 91: 7390-7397.
2. Tedder, T.F., et al. 1995. The selectins: vascular adhesion molecules. *FASEB J.* 10: 866-873.

CHROMOSOMAL LOCATION

Genetic locus: SELE (human) mapping to 1q24.2; Sele (mouse) mapping to 1 H2.2.

SOURCE

E-Selectin (P2H3) is a mouse monoclonal antibody raised against IL-1 β activated human vascular endothelial cells expressing E-Selectin.

PRODUCT

Each vial contains 200 μ g IgG₁ kappa light chain in 1.0 ml of PBS with < 0.1% sodium azide and 0.1% gelatin. Also available azide-free for blocking, sc-18840 L, 200 μ g/0.1 ml.

E-Selectin (P2H3) is available conjugated to either phycoerythrin (sc-18840 PE) or fluorescein (sc-18840 FITC), 200 μ g/ml, for WB (RGB), IF, IHC(P) and FCM.

APPLICATIONS

E-Selectin (P2H3) is recommended for detection of E-Selectin of mouse, rat and human origin by Western Blotting (starting dilution 1:200, dilution range 1:100-1:1000), immunoprecipitation [1-2 μ g per 100-500 μ g of total protein (1 ml of cell lysate)], immunofluorescence (starting dilution 1:50, dilution range 1:50-1:500), flow cytometry (1 μ g per 1 x 10⁶ cells) and solid phase ELISA (starting dilution 1:30, dilution range 1:30-1:3000).

Suitable for use as control antibody for E-Selectin siRNA (h): sc-29296, E-Selectin siRNA (m): sc-35244, E-Selectin shRNA Plasmid (h): sc-29296-SH, E-Selectin shRNA Plasmid (m): sc-35244-SH, E-Selectin shRNA (h) Lentiviral Particles: sc-29296-V and E-Selectin shRNA (m) Lentiviral Particles: sc-35244-V.

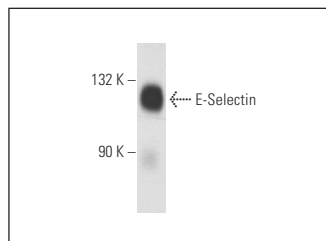
Molecular Weight of E-Selectin: 115 kDa.

Positive Controls: HeLa whole cell lysate: sc-2200, U-698-M whole cell lysate: sc-364799 or Jurkat whole cell lysate: sc-2204.

STORAGE

Store at 4° C, ****DO NOT FREEZE****. Stable for one year from the date of shipment. Non-hazardous. No MSDS required.

DATA



E-Selectin (P2H3): sc-18840. Western blot analysis of human recombinant E-Selectin.

SELECT PRODUCT CITATIONS

1. Couvelard, A., et al. 2006. Identification of potential therapeutic targets by gene-expression profiling in pancreatic endocrine tumors. *Gastroenterology* 131: 1597-1610.
2. Kitaya, K. and Yasuo, T. 2010. Aberrant expression of selectin E, CXCL1, and CXCL13 in chronic endometritis. *Mod. Pathol.* 23: 1136-1146.
3. Funakoshi, Y., et al. 2010. Possible involvement of G-CSF in IgA nephropathy developing in an allogeneic peripheral blood SCT donor. *Bone Marrow Transplant.* 45: 1477-1478.
4. Schmerwitz, U.K., et al. 2011. Flavopiridol protects against inflammation by attenuating leukocyte-endothelial interaction via inhibition of cyclin-dependent kinase 9. *Arterioscler. Thromb. Vasc. Biol.* 31: 280-288.
5. Wang, Z., et al. 2014. Cimetidine attenuates vinorelbine-induced phlebitis in mice by mitigating E-Selectin expression. *Cancer Chemother. Pharmacol.* 74: 239-247.
6. Sahin, H., et al. 2014. Expression of P-cadherin (cadherin-3) and E-Selectin in the villous trophoblast of first trimester human placenta. *J. Turk. Ger. Gynecol. Assoc.* 15: 13-17.
7. Xu, J., et al. 2018. Quinic acid-conjugated nanoparticles enhance drug delivery to solid tumors via interactions with endothelial selectins. *Small* 14: e1803601.
8. Jung, T.W., et al. 2021. Meteorin-like protein (METRNL)/IL-41 improves LPS-induced inflammatory responses via AMPK or PPAR δ -mediated signaling pathways. *Adv. Med. Sci.* 66: 155-161.

RESEARCH USE

For research use only, not for use in diagnostic procedures.



See **E-Selectin (D-7): sc-137054** for E-Selectin antibody conjugates, including AC, HRP, FITC, PE, and Alexa Fluor[®] 488, 546, 594, 647, 680 and 790.