

Bikunin (M-17): sc-21600

BACKGROUND

Inter- α -inhibitor (α 1) is a serine proteinase inhibitor found in high concentrations in human plasma. α 1 is composed of a light inhibitory chain called bikunin and two heavy chains. Bikunin (inter- α -trypsin inhibitor light chain, ITI-LC or urinary trypsin inhibitor) is covalently linked to two heavy chains that, after tissular diffusion, stabilize the extracellular matrix. Bikunin exerts antiprotease activity and other antiinflammatory functions. Bikunin is expressed in various human tissues such as kidney, heart, liver, lung and pancreas and is stored in the granules of human connective tissue mast cells. Bikunin is expressed on the surface of pancreatic acinar cells and may play an important role in preventing autodigestion by exocrine enzymes such as trypsinogen and chymotrypsinogen. It is a potent inhibitor of calcium oxalate crystallization and has been implicated in various renal diseases, including urolithiasis.

REFERENCES

1. Itoh, H., Tomita, M., Kobayashi, T., Uchino, H., Maruyama, H. and Nawa, Y. 1996. Expression of inter- α -trypsin inhibitor light chain (Bikunin) in human pancreas. *J. Biochem.* 120: 271-275.
2. Olsen, E.H., Rahbek-Nielsen, H., Thogersen, I.B., Roepstorff, P. and Engild, J.J. 1998. Posttranslational modifications of human inter- α -inhibitor: identification of glycans and disulfide bridges in heavy chains 1 and 2. *Biochemistry* 37: 408-416.
3. Dawson, C.J., Grover, P.K., Kanellos, J., Pham, H., Kupczyk, G., Oates, A. and Ryall, R.L. 1998. Inter- α -inhibitor in calcium stones. *Clin. Sci.* 95: 187-193.
4. Ide, H., Itoh, H., Yoshida, E., Kobayashi, T., Tomita, M., Maruyama, H., Osada, Y., Nakahata, T. and Nawa, Y. 1999. Immunohistochemical demonstration of inter- α -trypsin inhibitor light chain (Bikunin) in human mast cells. *Cell Tissue Res.* 297: 149-154.
5. Atmani, F., Glenton, P.A. and Khan, S.R. 1999. Role of inter- α -inhibitor and its related proteins in experimentally induced calcium oxalate urolithiasis. Localization of proteins and expression of Bikunin gene in the rat kidney. *Urol. Res.* 27: 63-67.
6. Balduyck, M., Albani, D., Jourdain, M., Mizon, C., Tournoy, A., Drobecq, H., Fourrier, F. and Mizon, J. 2000. Inflammation-induced systemic proteolysis of inter- α -inhibitor in plasma from patients with sepsis. *J. Lab. Clin. Med.* 135: 188-198.

CHROMOSOMAL LOCATION

Genetic locus: AMBP (human) mapping to 9q32-q33; Ambp (mouse) mapping to 4 C1-C3.

SOURCE

Bikunin (M-17) is an affinity purified goat polyclonal antibody raised against a peptide mapping at the C-terminus of Bikunin of mouse origin.

RESEARCH USE

For research use only, not for use in diagnostic procedures.

PRODUCT

Each vial contains 200 μ g IgG in 1.0 ml of PBS with < 0.1% sodium azide and 0.1% gelatin.

Blocking peptide available for competition studies, sc-21600 P, (100 μ g peptide in 0.5 ml PBS containing < 0.1% sodium azide and 0.2% BSA).

APPLICATIONS

Bikunin (M-17) is recommended for detection of AMBP and Bikunin of mouse and rat origin by Western Blotting (starting dilution 1:200, dilution range 1:100-1:1000), immunoprecipitation [1-2 μ g per 100-500 μ g of total protein (1 ml of cell lysate)], immunofluorescence (starting dilution 1:50, dilution range 1:50-1:500) and solid phase ELISA (starting dilution 1:30, dilution range 1:30-1:3000).

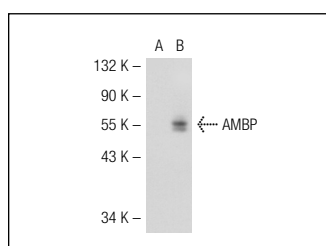
Suitable for use as control antibody for AMBP siRNA (m): sc-39553, AMBP shRNA Plasmid (m): sc-39553-SH and AMBP shRNA (m) Lentiviral Particles: sc-39553-V.

Molecular Weight of Bikunin: 30 kDa.

RECOMMENDED SECONDARY REAGENTS

To ensure optimal results, the following support (secondary) reagents are recommended: 1) Western Blotting: use donkey anti-goat IgG-HRP: sc-2020 (dilution range: 1:2000-1:100,000) or Cruz Marker™ compatible donkey anti-goat IgG-HRP: sc-2033 (dilution range: 1:2000-1:5000), Cruz Marker™ Molecular Weight Standards: sc-2035, TBS Blotto A Blocking Reagent: sc-2333 and Western Blotting Luminol Reagent: sc-2048. 2) Immunoprecipitation: use Protein A/G PLUS-Agarose: sc-2003 (0.5 ml agarose/2.0 ml). 3) Immunofluorescence: use donkey anti-goat IgG-FITC: sc-2024 (dilution range: 1:100-1:400) or donkey anti-goat IgG-TR: sc-2783 (dilution range: 1:100-1:400) with UltraCruz™ Mounting Medium: sc-24941.

DATA



Bikunin (M-17): sc-21600. Western blot analysis of AMBP expression in non-transfected: sc-117752 (A) and mouse AMBP transfected: sc-124965 (B) 293T whole cell lysates.

STORAGE

Store at 4° C, **DO NOT FREEZE**. Stable for one year from the date of shipment. Non-hazardous. No MSDS required.

PROTOCOLS

See our web site at www.scbt.com or our catalog for detailed protocols and support products.