

KNRK Whole Cell Lysate: sc-2214

BACKGROUND

Santa Cruz Biotechnology offers a variety of whole cell lysates for use in combination with our antibodies as Western Blotting controls. KNRK Whole Cell Lysate is derived from the KNRK cell line using a procedure that ensures protein integrity and lot-to-lot reproducibility. All lysates are tested by Western Blotting to assure that each one contains the expected concentration and assortment of proteins. Numerous antibodies directed against a wide array of mammalian proteins are used to test each lysate. KNRK cells do not produce Ki-MSV particles. Tested and found negative for ectromelia virus (mousepox).

REFERENCES

1. Aaronson, S.A. and Weaver, C.A. 1971. Characterization of murine sarcoma virus (Kirsten) transformation of mouse and human cells. *J. Gen. Virol.* 13: 245-252.
2. Böhm, S.K., Khitin, L.M., Grady, E.F., Aponte, G., Payan, D.G. and Bunnett, N.W. 1996. Mechanisms of desensitization and resensitization of proteinase-activated receptor-2. *J. Biol. Chem.* 271: 22003-22016.
3. Gimona, M., Kazzaz, J.A. and Helfman, D.M. 1996. Forced expression of tropomyosin 2 or 3 in v-Ki-ras-transformed fibroblasts results in distinct phenotypic effects. *Proc. Natl. Acad. Sci. USA* 93: 9618-9623.

SOURCE

KNRK Whole Cell Lysate is derived from the KNRK cell line.

Organism: *Rattus norvegicus* (rat)
Organ: Kidney
Disease: Normal
Cell Type: Kirsten murine sarcoma virus (Ki-MSV) transformed
Growth Properties: Adherent and suspension (mixed)

PRODUCT

Each vial contains 500 µg protein in 200 µl of an SDS-PAGE Western Blotting buffer, which consists of 100 µl RIPA Lysis Buffer and 100 µl Electrophoresis Buffer, 2X.

APPLICATIONS

KNRK Whole Cell Lysate is provided as a Western Blotting positive control. Recommended use is 50 µg (20 µl) per lane. Sample vial should be boiled once prior to use.

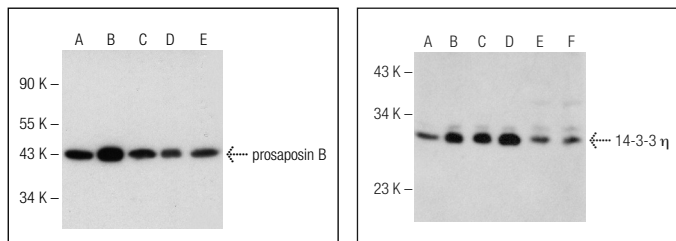
PREPARATION METHOD

Cells are cultured with appropriate media conditions and allowed to reach a confluency of 75%. Cells are lysed using the RIPA Lysis Buffer System (sc-24948). The BCA Protein Assay Kit (sc-202389) is used to determine the total protein concentration. The lysate is adjusted to contain 500 µg of total cellular protein in 100 µl before adding an equal volume of Electrophoresis Sample Buffer, 2X (sc-24945). Final concentration of product is 500 µg total protein in a final volume of 200 µl.

STORAGE

Store at -20° C; stable for one year from the date of shipment. Non-hazardous. No MSDS required. Minimize repeated freezing and thawing.

DATA



saposin B (K-12): sc-27012. Western blot analysis of saposin B expression in IMR-32 (A), KNRK (B), Hep G2 (C), Jurkat (D) and U-2 OS (E) whole cell lysates.

14-3-3 η (E-12) sc-17287. Western blot analysis of 14-3-3 η expression in NIH/3T3 (A), EOC 20 (B), KNRK (C), WEHI-231 (D), SW480 (E) and T98G (F) whole cell lysates.

RESEARCH USE

For research use only, not for use in diagnostic procedures.

PROTOCOLS

See our web site at www.scbt.com or our catalog for detailed protocols and support products.