

3611-RF Whole Cell Lysate: sc-2215

BACKGROUND

Santa Cruz Biotechnology offers a variety of whole cell lysates for use in combination with our antibodies as Western Blotting controls. 3611-RF Whole Cell Lysate is derived from the 3611-RF cell line using a procedure that ensures protein integrity and lot-to-lot reproducibility. All lysates are tested by Western Blotting to assure that each one contains the expected concentration and assortment of proteins. Numerous antibodies directed against a wide array of mammalian proteins are used to test each lysate.

SOURCE

3611-RF Whole Cell Lysate is derived from the 3611-RF cell line.

Organism: *Rattus norvegicus* (rat)
Comments: Raf-1 transformed fibroblast cells

PRODUCT

Each vial contains 500 µg protein in 200 µl of an SDS-PAGE Western Blotting buffer, which consists of 100 µl RIPA Lysis Buffer and 100 µl Electrophoresis Buffer, 2X.

APPLICATIONS

3611-RF Whole Cell Lysate is provided as a Western Blotting positive control. Recommended use is 50 µg (20 µl) per lane. Sample vial should be boiled once prior to use.

PREPARATION METHOD

Cells are cultured with appropriate media conditions and allowed to reach a confluency of 75%. Cells are lysed using the RIPA Lysis Buffer System (sc-24948). The BCA Protein Assay Kit (sc-202389) is used to determine the total protein concentration. The lysate is adjusted to contain 500 µg of total cellular protein in 100 µl before adding an equal volume of Electrophoresis Sample Buffer, 2X (sc-24945). Final concentration of product is 500 µg total protein in a final volume of 200 µl.

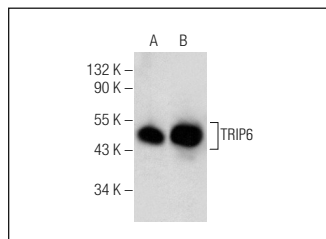
PROTOCOLS

See our web site at www.scbt.com or our catalog for detailed protocols and support products.

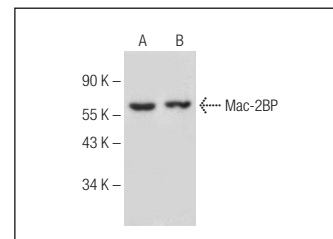
STORAGE

Store at -20° C; stable for one year from the date of shipment. Non-hazardous. No MSDS required. Minimize repeated freezing and thawing.

DATA



TRIP6 (G-11): sc-376303. Western blot analysis of TRIP6 expression in NIH/3T3 nuclear extract (A) and 3611-RF whole cell lysate (B).



Mac-2BP (C-2): sc-374331. Western blot analysis of Mac-2BP expression in 3611-RF (A) and NIH/3T3 (B) whole cell lysates.

RESEARCH USE

For research use only, not for use in diagnostic procedures.