

mouse brain extract: sc-2253

BACKGROUND

Santa Cruz Biotechnology offers a variety of tissue extracts for use in combination with our antibodies as Western Blotting controls. Mouse brain extract is derived from normal, healthy mouse brain tissue using a procedure that ensures protein integrity and lot-to-lot reproducibility. All tissue extracts are tested by Western Blotting to assure that each one contains the expected concentration and assortment of proteins. Numerous antibodies directed against a wide array of mammalian proteins are used to test each tissue extract.

REFERENCES

- Ruest, L.B., Khalyfa, A. and Wang, E. 2002. Development-dependent disappearance of caspase-3 in skeletal muscle is post-transcriptionally regulated. *J. Cell. Biochem.* 86: 21-28.

SOURCE

mouse brain tissue extract is derived from normal, healthy mouse brain tissue. The mouse brain tissue was collected from adult Swiss Webster strain mice (mixed sex, 8-10 weeks of age, US origin).

PRODUCT

Each vial contains 500 µg protein in 200 µl of an SDS-PAGE Western Blotting buffer, which consists of 100 µl RIPA Lysis Buffer and 100 µl Electrophoresis Buffer, 2X.

APPLICATIONS

mouse brain extract is provided as a Western Blotting positive control. Recommended use is 50 µg (20 µl) per lane. Sample vial should be boiled once prior to use.

PREPARATION METHOD

Frozen tissues are reduced to a granular powder using a tissue crusher. Crushed tissues are suspended in solution and lysed using the RIPA Lysis Buffer System (sc-24948). The BCA Protein Assay Kit (sc-202389) is used to determine the total protein concentration. The lysate is adjusted to contain 500 µg of total cellular protein in 100 µl before adding an equal volume of Electrophoresis Sample Buffer, 2X (sc-24945). Final concentration of product is 500 µg total protein in a final volume of 200 µl.

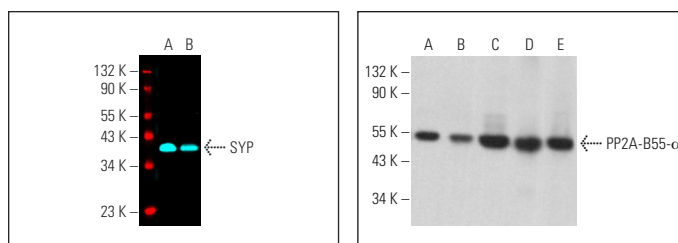
STORAGE

Store at -20° C; stable for one year from the date of shipment. Non-hazardous. No MSDS required. Minimize repeated freezing and thawing.

RESEARCH USE

For research use only, not for use in diagnostic procedures.

DATA



SYP (SVP38) Alexa Fluor[®] 647: sc-12737 AF647. Direct fluorescent western blot analysis of SYP expression in mouse brain (A) and rat brain (B) tissue extracts. Blocked with UltraCruz[®] Blocking Reagent: sc-516214.

PP2A-B55-α (2G9): sc-81606. Western blot analysis of PP2A-B55-α expression in 3T3-L1 (A), M1 (B), RAW 264.7 (C) and C6 (D) whole cell lysates and mouse brain tissue extract (E).

PROTOCOLS

See our web site at www.scbt.com or our catalog for detailed protocols and support products.