

MDA-MB-468 Whole Cell Lysate: sc-2282

BACKGROUND

Santa Cruz Biotechnology offers a variety of whole cell lysates for use in combination with our antibodies as Western Blotting controls. MDA-MB-468 Whole Cell Lysate is derived from the MDA-MB-468 cell line using a procedure that ensures protein integrity and lot-to-lot reproducibility. All lysates are tested by Western Blotting to assure that each one contains the expected concentration and assortment of proteins. Numerous antibodies directed against a wide array of mammalian proteins are used to test each lysate.

The MDA-MB-468 cell line was isolated in 1977 by R. Cailleau, et al., from a pleural effusion of a 51 year old Black female patient with metastatic adenocarcinoma of the breast. Although the tissue donor was heterozygous for the G6PD alleles, the cell line consistently showed only the G6PD A phenotype. There is a G→A mutation in codon 273 of the p53 gene resulting in an Arg→His substitution. EGF receptor is present at 1×10^6 per cell.

REFERENCES

1. Siciliano, M.J., Barker, P.E. and Cailleau, R. 1979. Mutually exclusive genetic signatures of human breast tumor cell lines with a common chromosomal marker. *Cancer Res.* 39: 919-922.
2. Pathak, S., Siciliano, M.J., Cailleau, R., Wiseman, C.L. and Hsu, T.C. 1979. A human breast adenocarcinoma with chromosome and isoenzyme markers similar to those of the HeLa line. *J. Natl. Cancer Inst.* 62: 263-271.
3. Brinkley, B.R., Beall, P.T., Wible, L.J., Mace, M.L., Turner, D.S. and Cailleau, R.M. 1980. Variations in cell form and cytoskeleton in human breast carcinoma cells *in vitro*. *Cancer Res.* 40: 3118-3129.

SOURCE

MDA-MB-468 Whole Cell Lysate is derived from the MDA-MB-468 cell line.

Organism: *Homo sapiens* (human)
Organ: Mammary gland; breast
Disease: Adenocarcinoma
Cell Type: Epithelial
Growth Properties: Adherent

PRODUCT

Each vial contains 500 µg protein in 200 µl of an SDS-PAGE Western Blotting buffer, which consists of 100 µl RIPA Lysis Buffer and 100 µl Electrophoresis Buffer, 2X.

APPLICATIONS

MDA-MB-468 Whole Cell Lysate is provided as a Western Blotting positive control. Recommended use is 50 µg (20 µl) per lane. Sample vial should be boiled once prior to use.

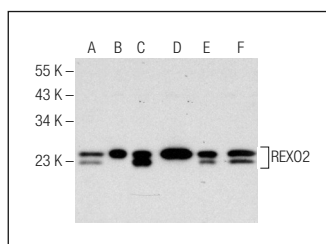
STORAGE

Store at -20° C; stable for one year from the date of shipment. Non-hazardous. No MSDS required. Minimize repeated freezing and thawing.

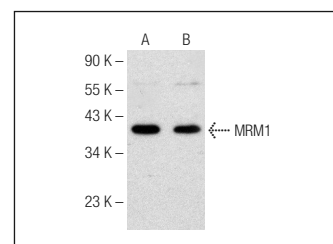
PREPARATION METHOD

Cells are cultured with appropriate media conditions and allowed to reach a confluency of 75%. Cells are lysed using the RIPA Lysis Buffer System (sc-24948). The BCA Protein Assay Kit (sc-202389) is used to determine the total protein concentration. The lysate is adjusted to contain 500 µg of total cellular protein in 100 µl before adding an equal volume of Electrophoresis Sample Buffer, 2X (sc-24945). Final concentration of product is 500 µg total protein in a final volume of 200 µl.

DATA



REXO2 (H-7): sc-166726. Western blot analysis of REXO2 expression in HeLa (A) and K-562 (B) nuclear extracts and HS 181.Tes (C), K-562 (D), T-47D (E) and MDA-MB-468 (F) whole cell lysates.



MRM1 (E-22): sc-133792. Western blot analysis of MRM1 expression in MDA-MB-468 (A) and COLO 320DM (B) whole cell lysates.

RESEARCH USE

For research use only, not for use in diagnostic procedures.

PROTOCOLS

See our web site at www.scbt.com or our catalog for detailed protocols and support products.