

H4 Cell Lysate: sc-2408

BACKGROUND

Santa Cruz Biotechnology offers a variety of whole cell lysates for use in combination with our antibodies as Western Blotting controls. H4 Whole Cell Lysate is derived from the H4 cell line using a procedure that ensures protein integrity and lot-to-lot reproducibility. All lysates are tested by Western Blotting to assure that each one contains the expected concentration and assortment of proteins. Numerous antibodies directed against a wide array of mammalian proteins are used to test each lysate.

Derived from a 37 year old male Caucasian, H4 is a hypertriploid human cell line having the modal chromosome number of 73 occurring in 26% of cells. However, cells having 75 chromosomes also occurred at a high rate (24%). Higher ploidies were found at 0.4%.

REFERENCES

1. Arnstein, P., Taylor, D.O., Nelson-Rees, W.A., Huebner, R.J. and Lennette, E.H. 1974. Propagation of human tumors in antithymocyte serum-treated mice. *J. Natl. Cancer Inst.* 52: 71-84.
2. Day, R.S. and Ziolkowski, C.H. 1979. Human brain tumour cell strains with deficient host-cell reactivation of N-methyl-N'-nitro-N-nitrosoguanidine-damaged adenovirus 5. *Nature* 279: 797-799.

SOURCE

H4 Whole Cell Lysate is derived from the H4 cell line.

Organism: *Homo sapiens* (human)
 Organ: Brain
 Disease: Neuroglioma
 Growth Properties: Adherent

PRODUCT

Each vial contains 500 µg protein in 200 µl of an SDS-PAGE Western Blotting buffer, which consists of 100 µl RIPA Lysis Buffer and 100 µl Electrophoresis Buffer, 2X.

APPLICATIONS

H4 Whole Cell Lysate is provided as a Western Blotting positive control. Recommended use is 50 µg (20 µl) per lane. Sample vial should be boiled once prior to use.

PREPARATION METHOD

Cells are cultured with appropriate media conditions and allowed to reach a confluency of 75%. Cells are lysed using the RIPA Lysis Buffer System (sc-24948). The BCA Protein Assay Kit (sc-202389) is used to determine the total protein concentration. The lysate is adjusted to contain 500 µg of total cellular protein in 100 µl before adding an equal volume of Electrophoresis Sample Buffer, 2X (sc-24945). Final concentration of product is 500 µg total protein in a final volume of 200 µl.

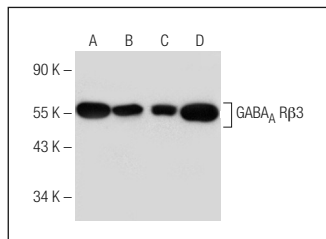
RESEARCH USE

For research use only, not for use in diagnostic procedures.

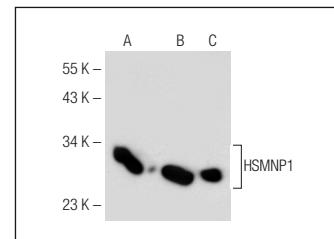
STORAGE

Store at -20° C; stable for one year from the date of shipment. Non-hazardous. No MSDS required. Minimize repeated freezing and thawing.

DATA



GABA_A Rβ3 (D-12): sc-376252. Western blot analysis of GABA_A Rβ3 expression in H4 (A), SK-N-SH (B), IMR-32 (C) and A549 (D) whole cell lysates.



HSMNP1 (H-7): sc-376178. Western blot analysis of HSMNP1 expression in human brain tissue extract (A) and U-87 MG (B) and H4 (C) whole cell lysates.

PROTOCOLS

See our web site at www.scbt.com or our catalog for detailed protocols and support products.