

Stat6 (E-10): sc-271213

BACKGROUND

Membrane receptor signaling by various ligands, including interferons and growth hormones such as EGF, induces activation of JAK kinases which then leads to tyrosine phosphorylation of proteins that have been designated Stats (signal transducers and activators of transcription). The first members of this family to be described include Stat1 α p91, Stat1 β p84 (a form of p91 that lacks 38 COOH-terminal amino acids) and Stat2 p113. Stat1 and Stat2 are induced by IFN- α and form a heterodimer which is part of the ISGF-3 transcription factor complex. Stat3, which becomes activated in response to epidermal growth factor (EGF) and interleukin-6 (IL-6), but not interferon- γ (IFN- γ) or Stat4, is an additional member of this family. It has been suggested that the phosphorylated forms of both Stat3 and Stat4 form homodimers as well as heterodimers with the other members of the Stat family, and that differential activation of different Stat proteins in response to different ligands should help to explain specificity in nuclear signaling from the cell surface. Highest expression of Stat4 is seen in testis and myeloid cells. IL-12 has been identified as an activator of Stat4. Other members of the Stat family include Stat5, which has been shown to be activated by Prolactin and by IL-3, and Stat6 (also designated IL-4 Stat), which is involved in IL-4-activated signaling pathways.

REFERENCES

- Zhong, Z., et al. 1994. Stat3: a Stat family member activated by tyrosine phosphorylation in response to epidermal growth factor and interleukin-6. *Science* 264: 95-98.
- Darnell, J.E., et al. 1994. JAK-Stat pathways and transcriptional activation in response to IFNs and other extracellular signaling proteins. *Science* 264: 1415-1421.
- Hou, J., et al. 1994. An interleukin-4-induced transcription factor: IL-4 Stat. *Science* 265: 1701-1706.

CHROMOSOMAL LOCATION

Genetic locus: STAT6 (human) mapping to 12q13.3; Stat6 (mouse) mapping to 10 D3.

SOURCE

Stat6 (E-10) is a mouse monoclonal antibody specific for an epitope mapping between amino acids 806-847 at the C-terminus of Stat6 of human origin.

PRODUCT

Each vial contains 200 μ g IgG γ_1 kappa light chain in 1.0 ml of PBS with < 0.1% sodium azide and 0.1% gelatin. Also available as TransCruz reagent for Gel Supershift and ChIP applications, sc-271213 X, 200 μ g/0.1 ml.

Blocking peptide available for competition studies, sc-271213 P, (100 μ g peptide in 0.5 ml PBS containing < 0.1% sodium azide and 0.2% stabilizer protein).

STORAGE

Store at 4° C, ****DO NOT FREEZE****. Stable for one year from the date of shipment. Non-hazardous. No MSDS required.

APPLICATIONS

Stat6 (E-10) is recommended for detection of Stat6 of mouse, rat and human origin by Western Blotting (starting dilution 1:100, dilution range 1:100-1:1000), immunoprecipitation [1-2 μ g per 100-500 μ g of total protein (1 ml of cell lysate)], immunofluorescence (starting dilution 1:50, dilution range 1:50-1:500) and solid phase ELISA (starting dilution 1:30, dilution range 1:30-1:3000).

Suitable for use as control antibody for Stat6 siRNA (h): sc-29497, Stat6 siRNA (m): sc-36570, Stat6 shRNA Plasmid (h): sc-29497-SH, Stat6 shRNA Plasmid (m): sc-36570-SH, Stat6 shRNA (h) Lentiviral Particles: sc-29497-V and Stat6 shRNA (m) Lentiviral Particles: sc-36570-V.

Stat6 (E-10) X TransCruz antibody is recommended for Gel Supershift and ChIP applications.

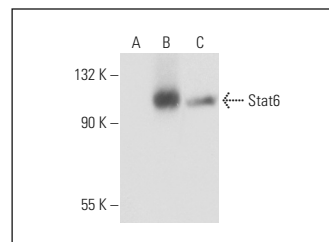
Molecular Weight of Stat6: 119 kDa.

Positive Controls: Stat6 (h): 293T Lysate: sc-117401, BJAB whole cell lysate: sc-2207 or K-562 nuclear extract: sc-2130.

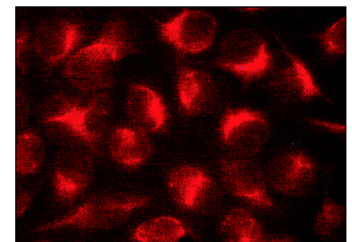
RECOMMENDED SUPPORT REAGENTS

To ensure optimal results, the following support reagents are recommended: 1) Western Blotting: use m-IgG κ BP-HRP: sc-516102 or m-IgG κ BP-HRP (Cruz Marker): sc-516102-CM (dilution range: 1:1000-1:10000), Cruz Marker™ Molecular Weight Standards: sc-2035, UltraCruz® Blocking Reagent: sc-516214 and Western Blotting Luminol Reagent: sc-2048. 2) Immunoprecipitation: use Protein A/G PLUS-Agarose: sc-2003 (0.5 ml agarose/2.0 ml). 3) Immunofluorescence: use m-IgG κ BP-FITC: sc-516140 or m-IgG κ BP-PE: sc-516141 (dilution range: 1:50-1:200) with UltraCruz® Mounting Medium: sc-24941 or UltraCruz® Hard-set Mounting Medium: sc-359850.

DATA



Stat6 (E-10): sc-271213. Western blot analysis of Stat6 expression in non-transfected 293T: sc-117752 (A), human Stat6 transfected 293T: sc-117401 (B) and BJAB (C) whole cell lysates.



Stat6 (E-10): sc-271213. Immunofluorescence staining of methanol-fixed HeLa cells showing cytoplasmic localization.

SELECT PRODUCT CITATIONS

- Reber, L.L., et al. 2012. A dissociated glucocorticoid receptor modulator reduces airway hyperresponsiveness and inflammation in a mouse model of asthma. *J. Immunol.* 188: 3478-3487.

RESEARCH USE

For research use only, not for use in diagnostic procedures.