

## SQSTM1 (D-3): sc-28359



The Power to Question

## BACKGROUND

The chronic focal skeletal disorder, Paget's disease of bone, affects 2-3% of the population over the age of 60 years. Paget's disease is characterized by increased bone resorption by osteoclasts, followed by abundant new bone formation that is of poor quality. The disease leads to several complications including bone pain and deformities, as well as fissures and fractures. Mutations in the ubiquitin-associated (UBA) domain of the Sequestosome 1 protein (SQSTM1), also designated p62 or ZIP, commonly cause Paget's disease since the UBA is necessary for aggregate sequestration and cell survival.

## CHROMOSOMAL LOCATION

Genetic locus: SQSTM1 (human) mapping to 5q35.3.

## SOURCE

SQSTM1 (D-3) is a mouse monoclonal antibody raised against amino acids 151-440 of SQSTM1 of human origin.

## PRODUCT

Each vial contains 200 µg IgG<sub>1</sub> kappa light chain in 1.0 ml of PBS with < 0.1% sodium azide and 0.1% gelatin.

SQSTM1 (D-3) is available conjugated to agarose (sc-28359 AC), 500 µg/0.25 ml agarose in 1 ml, for IP; to HRP (sc-28359 HRP), 200 µg/ml, for WB, IHC(P) and ELISA; to either phycoerythrin (sc-28359 PE), fluorescein (sc-28359 FITC), Alexa Fluor® 488 (sc-28359 AF488), Alexa Fluor® 546 (sc-28359 AF546), Alexa Fluor® 594 (sc-28359 AF594) or Alexa Fluor® 647 (sc-28359 AF647), 200 µg/ml, for WB (RGB), IF, IHC(P) and FCM; and to either Alexa Fluor® 680 (sc-28359 AF680) or Alexa Fluor® 790 (sc-28359 AF790), 200 µg/ml, for Near-Infrared (NIR) WB, IF and FCM.

Alexa Fluor® is a trademark of Molecular Probes, Inc., Oregon, USA

## APPLICATIONS

SQSTM1 (D-3) is recommended for detection of SQSTM1 of human origin by Western blotting (starting dilution 1:200, dilution range 1:100-1:1000), immunoprecipitation [1-2 µg per 100-500 µg of total protein (1 ml of cell lysate)], immunofluorescence (starting dilution 1:50, dilution range 1:50-1:500), immunohistochemistry (including paraffin-embedded sections) (starting dilution 1:50, dilution range 1:50-1:500) and solid phase ELISA (starting dilution 1:30, dilution range 1:30-1:3000).

Suitable for use as control antibody for SQSTM1 siRNA (h): sc-29679, SQSTM1 shRNA Plasmid (h): sc-29679-SH and SQSTM1 shRNA (h) Lentiviral Particles: sc-29679-V.

Molecular Weight of SQSTM1: 65 kDa.

Positive Controls: HeLa whole cell lysate: sc-2200, SK-LMS-1 cell lysate: sc-3813 or MDA-MB-231 cell lysate: sc-2232.

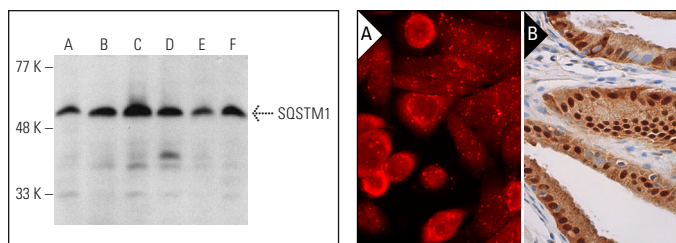
## STORAGE

Store at 4° C, \*\*DO NOT FREEZE\*\*. Stable for one year from the date of shipment. Non-hazardous. No MSDS required.

## RESEARCH USE

For research use only, not for use in diagnostic procedures.

## DATA



SQSTM1 (D-3) HRP: sc-28359 HRP. Direct western blot analysis of SQSTM1 expression in SK-LMS-1 (A), HeLa (B), MDA-MB-231 (C), SK-BR-3 (D), MDA-MB-468 (E) and Ca Ski (F) whole cell lysates.

SQSTM1 (D-3) Alexa Fluor® 594: sc-28359 AF594. Direct immunofluorescence staining of formalin-fixed SW480 cells showing cytoplasmic and nuclear localization. Blocked with UltraCruz® Blocking Reagent: sc-516214 (A). SQSTM1 (D-3): sc-28359. Immunoperoxidase staining of formalin fixed, paraffin-embedded human gall bladder tissue showing cytoplasmic and nuclear staining of glandular cells (B).

## SELECT PRODUCT CITATIONS

- Selby, P.L., et al. 2006. Canine distemper virus induces human osteoclastogenesis through NFκB and sequestosome 1/p62 activation. *J. Bone Miner. Res.* 21: 1750-1756.
- Park, H.W., et al. 2014. Pharmacological correction of obesity-induced autophagy arrest using calcium channel blockers. *Nat. Commun.* 5: 4834.
- Melland-Smith, M., et al. 2015. Disruption of sphingolipid metabolism augments ceramide-induced autophagy in preeclampsia. *Autophagy* 11: 653-669.
- Ahola, S., et al. 2016. Modified Atkins diet induces subacute selective ragged-red-fiber lysis in mitochondrial myopathy patients. *EMBO Mol. Med.* 8: 1234-1247.
- Kim, S.H., et al. 2017. Ezetimibe ameliorates steatohepatitis via AMP activated protein kinase-TFEB-mediated activation of autophagy and NLRP3 inflammasome inhibition. *Autophagy* 13: 1767-1781.
- Ji, J., et al. 2018. XIAP limits autophagic degradation of Sox2 and is a therapeutic target in nasopharyngeal carcinoma stem cells. *Theranostics* 8: 1494-1510.
- Goulielmaki, M., et al. 2019. DPS-2: a novel dual MEK/ERK and PI3K/AKT pathway inhibitor with powerful *ex vivo* and *in vivo* anticancer properties. *Transl. Oncol.* 12: 932-950.
- Gomez-Puerto, M.C., et al. 2020. MnTBAP reverses pulmonary vascular remodeling and improves cardiac function in experimentally induced pulmonary arterial hypertension. *Int. J. Mol. Sci.* 21: 4130.
- Kim, M.J., et al. 2021. Distinct roles of UVRAG and EGFR signaling in skeletal muscle homeostasis. *Mol. Metab.* 47: 101185.

## PROTOCOLS

See our web site at [www.scbt.com](http://www.scbt.com) for detailed protocols and support products.