

# OCT1 (2C5): sc-293181

## BACKGROUND

Organic cation transporters (OCT) are expressed in the plasma membrane of epithelial cells from a wide range of tissues, where they function in the elimination of endogenous amines, cationic drugs and other xenobiotics. The structure of OCTs consists of a 12-transmembrane-domain structure and a large extracellular hydrophilic loop. In humans, OCT1 is primarily expressed in the liver while OCT2 is expressed in the kidney. OCT3 is expressed in the placenta, skeletal muscle, prostate, aorta and liver. OCT3, also known as extraneuronal monoamine transporter, is widely expressed in different regions of the brain including the hippocampus, cerebellum and cerebral cortex. OCT3 mediates the uptake of several neuroactive agents, including dopamine, and may play an important role in the disposition of neurotransmitters and cationic neurotoxins in the brain.

## REFERENCES

- Gorboulev, V., et al. 1997. Cloning and characterization of two human polyspecific organic cation transporters. *DNA Cell Biol.* 16: 871-881.
- Koepsell, H. 1998. Organic cation transporters in intestine, kidney, liver, and brain. *Annu. Rev. Physiol.* 60: 246-266.
- Wu, X., et al. 1998. Identity of the organic cation transporter OCT3 as the extraneuronal monoamine transporter (uptake2) and evidence for the expression of the transporter in the brain. *J. Biol. Chem.* 273: 32776-32786.
- Dresser, M.J., et al. 1999. Molecular and functional characteristics of clones human organic cation transporters. *Pharm. Biotechnol.* 12: 441-469.
- Verhaagh, S., et al. 1999. Cloning of the mouse and human solute carrier 22a3 (Slc22a3/SLC22A3) identifies a conserved cluster three organic cation transporters on mouse chromosome 17 and human 6q26-q27. *Genomics* 55: 209-218.

## CHROMOSOMAL LOCATION

Genetic locus: SLC22A1 (human) mapping to 6q25.3.

## SOURCE

OCT1 (2C5) is a mouse monoclonal antibody raised against purified recombinant protein fragment corresponding to OCT1 of human origin.

## PRODUCT

Each vial contains 100 µg IgG<sub>1</sub> kappa light chain in 1.0 ml of PBS with < 0.1% sodium azide and 0.1% gelatin.

## STORAGE

Store at 4° C, **\*\*DO NOT FREEZE\*\***. Stable for one year from the date of shipment. Non-hazardous. No MSDS required.

## PROTOCOLS

See our web site at [www.scbt.com](http://www.scbt.com) for detailed protocols and support products.

## APPLICATIONS

OCT1 (2C5) is recommended for detection of OCT1 of human origin by Western Blotting (starting dilution 1:200, dilution range 1:100-1:1000), immunoprecipitation [1-2 µg per 100-500 µg of total protein (1 ml of cell lysate)], immunofluorescence (starting dilution 1:50, dilution range 1:50-1:500), immunohistochemistry (including paraffin-embedded sections) (starting dilution 1:50, dilution range 1:50-1:500), flow cytometry (1 µg per 1 x 10<sup>6</sup> cells) and solid phase ELISA (starting dilution 1:30, dilution range 1:30-1:3000).

Suitable for use as control antibody for OCT1 siRNA (h): sc-42552, OCT1 shRNA Plasmid (h): sc-42552-SH and OCT1 shRNA (h) Lentiviral Particles: sc-42552-V.

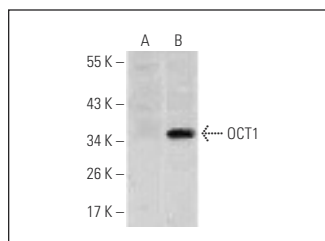
Molecular Weight of OCT1: 61 kDa.

Positive Controls: human OCT1 (284-347)-hlgGfc transfected HEK293 whole cell lysate.

## RECOMMENDED SUPPORT REAGENTS

To ensure optimal results, the following support reagents are recommended: 1) Western Blotting: use m-IgGκ BP-HRP: sc-516102 or m-IgGκ BP-HRP (Cruz Marker): sc-516102-CM (dilution range: 1:1000-1:10000), Cruz Marker™ Molecular Weight Standards: sc-2035, UltraCruz® Blocking Reagent: sc-516214 and Western Blotting Luminol Reagent: sc-2048. 2) Immunoprecipitation: use Protein A/G PLUS-Agarose: sc-2003 (0.5 ml agarose/2.0 ml). 3) Immunofluorescence: use m-IgGκ BP-FITC: sc-516140 or m-IgGκ BP-PE: sc-516141 (dilution range: 1:50-1:200) with UltraCruz® Mounting Medium: sc-24941 or UltraCruz® Hard-set Mounting Medium: sc-359850. 4) Immunohistochemistry: use m-IgGκ BP-HRP: sc-516102 with DAB, 50X: sc-24982 and Immunohistomount: sc-45086, or Organo/Limonene Mount: sc-45087.

## DATA



OCT1 (2C5): sc-293181. Western blot analysis of OCT1 expression in non-transfected (A) and human OCT1 (284-347)-hlgGfc transfected (B) HEK293 whole cell lysates.

## SELECT PRODUCT CITATIONS

- Moody, H.L., et al. 2017. MicroRNA-31 regulates chemosensitivity in malignant pleural mesothelioma. *Mol. Ther. Nucleic Acids* 8: 317-329.

## RESEARCH USE

For research use only, not for use in diagnostic procedures.