

γ Tubulin siRNA (h): sc-29322

BACKGROUND

Tubulin is a major cytoskeleton component that has five distinct forms, designated α , β , γ , δ and ϵ Tubulin. α and β Tubulins form heterodimers which multimerize to form a microtubule filament. Multiple β Tubulin isoforms ($\beta 1$, $\beta 2$, $\beta 3$, $\beta 4$, $\beta 5$, $\beta 6$ and $\beta 8$) have been characterized and are expressed in mammalian tissues. $\beta 1$ and $\beta 4$ are present throughout the cytosol, $\beta 2$ is present in the nuclei and nucleoplasm, and $\beta 3$ is a neuron-specific cyto-skeletal protein. γ Tubulin forms the gammasome, which is required for nucleating microtubule filaments at the centrosome. Both δ Tubulin and ϵ Tubulin are associated with the centrosome. δ Tubulin is a homolog of the *Chlamydomonas* δ Tubulin Uni3 and is found in association with the centrioles, whereas ϵ Tubulin localizes to the pericentriolar material. ϵ Tubulin exhibits a cell-cycle-specific pattern of localization, first associating with only the older of the centrosomes in a newly duplicated pair and later associating with both centrosomes.

REFERENCES

- Weisenberg, R.C. 1981. Invited review: the role of nucleotide triphosphate in Actin and tubulin assembly and function. *Cell Motil.* 1: 485-497.
- Burns, R.G. 1991. α -, β -, and γ -Tubulins: sequence comparisons and structural constraints. *Cell Motil. Cytoskeleton* 20: 181-189.
- Zheng, Y., et al. 1991. γ Tubulin is present in *Drosophila melanogaster* and *Homo sapiens* and is associated with the centrosome. *Cell* 65: 817-823.
- Ludueno, R.F. 1998. Multiple forms of Tubulin: different gene products and covalent modifications. *Int. Rev. Cytol.* 178: 207-275.

CHROMOSOMAL LOCATION

Genetic locus: TUBG1/TUBG2 (human) mapping to 17q21.2.

PRODUCT

γ Tubulin siRNA (h) is a pool of 4 target-specific 19-25 nt siRNAs designed to knock down gene expression. Each vial contains 3.3 nmol of lyophilized siRNA, sufficient for a 10 μ M solution once resuspended using protocol below. Suitable for 50-100 transfections. Also see γ Tubulin shRNA Plasmid (h): sc-29322-SH and γ Tubulin shRNA (h) Lentiviral Particles: sc-29322-V as alternate gene silencing products.

For independent verification of γ Tubulin (h) gene silencing results, we also provide the individual siRNA duplex components. Each is available as 3.3 nmol of lyophilized siRNA. These include: sc-29322A, sc-29322B, sc-29322C and sc-29322D.

STORAGE AND RESUSPENSION

Store lyophilized siRNA duplex at -20° C with desiccant. Stable for at least one year from the date of shipment. Once resuspended, store at -20° C, avoid contact with RNAses and repeated freeze thaw cycles.

Resuspend lyophilized siRNA duplex in 330 μ l of the RNase-free water provided. Resuspension of the siRNA duplex in 330 μ l of RNase-free water makes a 10 μ M solution in a 10 μ M Tris-HCl, pH 8.0, 20 mM NaCl, 1 mM EDTA buffered solution.

APPLICATIONS

γ Tubulin siRNA (h) is recommended for the inhibition of γ Tubulin expression in human cells.

SUPPORT REAGENTS

For optimal siRNA transfection efficiency, Santa Cruz Biotechnology's siRNA Transfection Reagent: sc-29528 (0.3 ml), siRNA Transfection Medium: sc-36868 (20 ml) and siRNA Dilution Buffer: sc-29527 (1.5 ml) are recommended. Control siRNAs or Fluorescein Conjugated Control siRNAs are available as 10 μ M in 66 μ l. Each contain a scrambled sequence that will not lead to the specific degradation of any known cellular mRNA. Fluorescein Conjugated Control siRNAs include: sc-36869, sc-44239, sc-44240 and sc-44241. Control siRNAs include: sc-37007, sc-44230, sc-44231, sc-44232, sc-44233, sc-44234, sc-44235, sc-44236, sc-44237 and sc-44238.

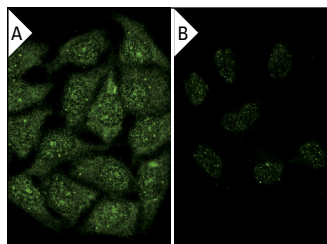
GENE EXPRESSION MONITORING

γ Tubulin (C-11): sc-17787 is recommended as a control antibody for monitoring of γ Tubulin gene expression knockdown by Western Blotting (starting dilution 1:200, dilution range 1:100-1:1000) or immunofluorescence (starting dilution 1:50, dilution range 1:50-1:500).

RT-PCR REAGENTS

Semi-quantitative RT-PCR may be performed to monitor γ Tubulin gene expression knockdown using RT-PCR Primer: γ Tubulin (h)-PR: sc-29322-PR (20 μ l, 437 bp). Annealing temperature for the primers should be 55-60° C and the extension temperature should be 68-72° C.

DATA



γ Tubulin siRNA (h): sc-29322. Immunofluorescence staining of methanol-fixed, control HeLa (A) and γ Tubulin siRNA silenced HeLa (B) cells showing diminished cytoplasmic and nuclear staining in the siRNA silenced cells. Cells probed with γ Tubulin (C-11): sc-17787.

RESEARCH USE

For research use only, not for use in diagnostic procedures.

PROTOCOLS

See our web site at www.scbt.com for detailed protocols and support products.