

Fibulin-4 (2C8): sc-293492

BACKGROUND

Fibulin proteins contribute to normal development of elastic fiber systems in various types of organs that require elasticity, such as vasculature, lung and skin. Fibulin-4, also known as EFEMP2 (EGF-containing fibulin-like extracellular matrix protein 2), MBP1 or UPH1 is a 443 amino acid secreted protein that contains six EGF-like calcium-binding domains and belongs to the fibulin family. Expressed ubiquitously with highest expression in heart, Fibulin-4 is essential for connective tissue development and elastic fiber formation, and may also play an important role in vascular patterning and collagen biosynthesis. Defects in the gene encoding Fibulin-4 are associated with autosomal recessive cutis laxa type I (CL type I), a connective tissue disorder that is inherited in both an autosomal dominant and an autosomal recessive manner and is characterized by inelastic tissue in all affected areas of the body.

REFERENCES

- Giltay, R., et al. 1999. Sequence, recombinant expression and tissue localization of two novel extracellular matrix proteins, Fibulin-3 and Fibulin-4. *Matrix Biol.* 18: 469-480.
- Katsanis, N., et al. 2000. Isolation of a paralog of the Doyme honeycomb retinal dystrophy gene from the multiple retinopathy critical region on 11q13. *Hum. Genet.* 106: 66-72.
- Gallagher, W.M., et al. 2001. Human Fibulin-4: analysis of its biosynthetic processing and mRNA expression in normal and tumour tissues. *FEBS Lett.* 489: 59-66.
- Toto, L., et al. 2002. Genetic heterogeneity in malattia leventinese. *Clin. Genet.* 62: 399-403.
- Huchtagowder, V., et al. 2006. Fibulin-4: a novel gene for an autosomal recessive cutis laxa syndrome. *Am. J. Hum. Genet.* 78: 1075-1080.
- Xiang, Y., et al. 2006. Fibulin-4 is a target of autoimmunity predominantly in patients with osteoarthritis. *J. Immunol.* 176: 3196-3204.
- McLaughlin, P.J., et al. 2006. Targeted disruption of Fibulin-4 abolishes elastogenesis and causes perinatal lethality in mice. *Mol. Cell. Biol.* 26: 1700-1709.
- Online Mendelian Inheritance in Man, OMIM™. 2006. Johns Hopkins University, Baltimore, MD. MIM Number: 604633. World Wide Web URL: <http://www.ncbi.nlm.nih.gov/omim/>
- El-Hallous, E., et al. 2007. Fibrillin-1 interactions with fibulins depend on the first hybrid domain and provide an adaptor function to tropoelastin. *J. Biol. Chem.* 282: 8935-8946.

CHROMOSOMAL LOCATION

Genetic locus: EFEMP2 (human) mapping to 11q13.1.

SOURCE

Fibulin-4 (2C8) is a mouse monoclonal antibody raised against amino acids 26-443 representing partial length Fibulin-4 of human origin.

PRODUCT

Each vial contains 100 µg IgG_{2a} kappa light chain in 1.0 ml of PBS with < 0.1% sodium azide and 0.1% gelatin.

APPLICATIONS

Fibulin-4 (2C8) is recommended for detection of Fibulin-4 of human origin by Western Blotting (starting dilution 1:200, dilution range 1:100-1:1000), immunoprecipitation [1-2 µg per 100-500 µg of total protein (1 ml of cell lysate)] and solid phase ELISA (starting dilution 1:30, dilution range 1:30-1:3000).

Suitable for use as control antibody for Fibulin-4 siRNA (h): sc-75017, Fibulin-4 shRNA Plasmid (h): sc-75017-SH and Fibulin-4 shRNA (h) Lentiviral Particles: sc-75017-V.

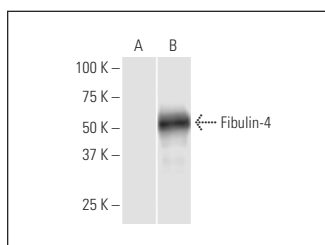
Molecular Weight of Fibulin-4: 61 kDa.

Positive Controls: Fibulin-4 transfected 293T whole cell lysate.

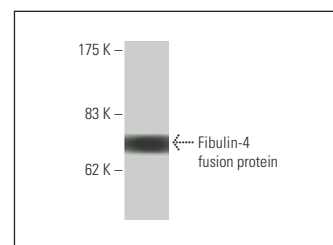
RECOMMENDED SUPPORT REAGENTS

To ensure optimal results, the following support reagents are recommended: 1) Western Blotting: use m-IgGκ BP-HRP: sc-516102 or m-IgGκ BP-HRP (Cruz Marker): sc-516102-CM (dilution range: 1:1000-1:10000), Cruz Marker™ Molecular Weight Standards: sc-2035, UltraCruz® Blocking Reagent: sc-516214 and Western Blotting Luminol Reagent: sc-2048. 2) Immunoprecipitation: use Protein A/G PLUS-Agarose: sc-2003 (0.5 ml agarose/2.0 ml).

DATA



Fibulin-4 (2C8): sc-293492. Western blot analysis of Fibulin-4 expression in non-transfected (A) and Fibulin-4 transfected (B) 293T whole cell lysates.



Fibulin-4 (2C8): sc-293492. Western blot analysis of human recombinant Fibulin-4 fusion protein.

STORAGE

Store at 4° C, **DO NOT FREEZE**. Stable for one year from the date of shipment. Non-hazardous. No MSDS required.

RESEARCH USE

For research use only, not for use in diagnostic procedures.

PROTOCOLS

See our web site at www.scbt.com for detailed protocols and support products.