

# casein kinase I $\delta$ siRNA (h): sc-29910

## BACKGROUND

Casein kinase I (also designated CKI) and casein kinase II (also designated CKII) compose a family of Serine/Threonine protein kinases which are present in all eukaryotes examined to date. CKI family members, which include CKI $\alpha$ ,  $\gamma$ ,  $\epsilon$  and  $\delta$ , have been implicated in the control of cytoplasmic and nuclear processes, including DNA replication and repair. CKII is usually expressed as a tetrameric complex consisting of either an  $\alpha\beta\beta 2$  or an  $\alpha\alpha'\beta 2$  structure. The  $\alpha$  catalytic subunit is stimulated by the  $\beta$  regulatory subunit, which undergoes autophosphorylation. CKII activity is high in the cytosol and nucleus of proliferating and differentiating cells. CKII is known to phosphorylate more than 100 different substrates including nuclear oncoproteins, transcription factors and enzymes involved in DNA metabolism.

## CHROMOSOMAL LOCATION

Genetic locus: CSNK1D (human) mapping to 17q25.3.

## PRODUCT

casein kinase I $\delta$  siRNA (h) is a pool of 3 target-specific 19-25 nt siRNAs designed to knock down gene expression. Each vial contains 3.3 nmol of lyophilized siRNA, sufficient for a 10  $\mu$ M solution once resuspended using protocol below. Suitable for 50-100 transfections. Also see casein kinase I $\delta$  shRNA Plasmid (h): sc-29910-SH and casein kinase I $\delta$  shRNA (h) Lentiviral Particles: sc-29910-V as alternate gene silencing products.

For independent verification of casein kinase I $\delta$  (h) gene silencing results, we also provide the individual siRNA duplex components. Each is available as 3.3 nmol of lyophilized siRNA. These include: sc-29910A, sc-29910B and sc-29910C.

## STORAGE AND RESUSPENSION

Store lyophilized siRNA duplex at -20° C with desiccant. Stable for at least one year from the date of shipment. Once resuspended, store at -20° C, avoid contact with RNAses and repeated freeze thaw cycles.

Resuspend lyophilized siRNA duplex in 330  $\mu$ l of the RNase-free water provided. Resuspension of the siRNA duplex in 330  $\mu$ l of RNase-free water makes a 10  $\mu$ M solution in a 10  $\mu$ M Tris-HCl, pH 8.0, 20 mM NaCl, 1 mM EDTA buffered solution.

## APPLICATIONS

casein kinase I $\delta$  siRNA (h) is recommended for the inhibition of casein kinase I $\delta$  expression in human cells.

## SUPPORT REAGENTS

For optimal siRNA transfection efficiency, Santa Cruz Biotechnology's siRNA Transfection Reagent: sc-29528 (0.3 ml), siRNA Transfection Medium: sc-36868 (20 ml) and siRNA Dilution Buffer: sc-29527 (1.5 ml) are recommended. Control siRNAs or Fluorescein Conjugated Control siRNAs are available as 10  $\mu$ M in 66  $\mu$ l. Each contain a scrambled sequence that will not lead to the specific degradation of any known cellular mRNA. Fluorescein Conjugated Control siRNAs include: sc-36869, sc-44239, sc-44240 and sc-44241. Control siRNAs include: sc-37007, sc-44230, sc-44231, sc-44232, sc-44233, sc-44234, sc-44235, sc-44236, sc-44237 and sc-44238.

## GENE EXPRESSION MONITORING

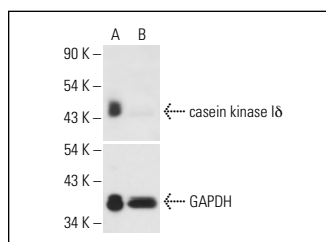
casein kinase I $\delta$  (C-8): sc-55553 is recommended as a control antibody for monitoring of casein kinase I $\delta$  gene expression knockdown by Western Blotting (starting dilution 1:200, dilution range 1:100-1:1000) or immunofluorescence (starting dilution 1:50, dilution range 1:50-1:500).

To ensure optimal results, the following support reagents are recommended: 1) Western Blotting: use m-IgG $\kappa$  BP-HRP: sc-516102 or m-IgG $\kappa$  BP-HRP (Cruz Marker): sc-516102-CM (dilution range: 1:1000-1:10000), Cruz Marker<sup>™</sup> Molecular Weight Standards: sc-2035, UltraCruz<sup>®</sup> Blocking Reagent: sc-516214 and Western Blotting Luminol Reagent: sc-2048. 2) Immunofluorescence: use m-IgG $\kappa$  BP-FITC: sc-516140 or m-IgG $\kappa$  BP-PE: sc-516141 (dilution range: 1:50-1:200) with UltraCruz<sup>®</sup> Mounting Medium: sc-24941 or UltraCruz<sup>®</sup> Hard-set Mounting Medium: sc-359850.

## RT-PCR REAGENTS

Semi-quantitative RT-PCR may be performed to monitor casein kinase I $\delta$  gene expression knockdown using RT-PCR Primer: casein kinase I $\delta$  (h)-PR: sc-29910-PR (20  $\mu$ l, 546 bp). Annealing temperature for the primers should be 55-60° C and the extension temperature should be 68-72° C.

## DATA



casein kinase I $\delta$  siRNA (h): sc-29910. Western blot analysis of casein kinase I $\delta$  expression in non-transfected control (A) and casein kinase I $\delta$  siRNA transfected (B) HeLa cells. Blot probed with casein kinase I $\delta$  (C-18): sc-6473. GAPDH (FL-335): sc-25778 used as specificity and loading control.

## SELECT PRODUCT CITATIONS

1. Bernatik, O., et al. 2011. Sequential activation and inactivation of dishevelled in the Wnt/ $\beta$ -catenin pathway by casein kinases. J. Biol. Chem. 286: 10396-10410.

## RESEARCH USE

For research use only, not for use in diagnostic procedures.

## PROTOCOLS

See our web site at [www.scbt.com](http://www.scbt.com) for detailed protocols and support products.