

BAF155 (DXD7): sc-32763

BACKGROUND

The SWI/SNF complex is involved in the activation of transcription via the remodeling of nucleosome structure in an ATP-dependent manner. Brm (also designated SNF1 or SNF2 α) and Brg-1 (also designated SNF2 or SNF2 β) are the ATPase subunits of the mammalian SWI/SNF complex. Brm, Brg-1, Ini1 (integrase interactor 1, also designated SNF5), BAF155 (also designated SRG3) and BAF170 are thought to comprise the functional core of the SWI/SNF complex. Addition of Ini1, BAF155 and BAF170 to Brg-1 appears to increase remodeling activity. Other complex subunits are thought to play regulatory roles. HSNF2L and hSNF2H both appear to be homologs of *Drosophila* ISWI, a Brm related ATPase that is present in chromatin remodeling complexes other than SWI/SNF, including the NURF (nucleosome remodeling factor).

CHROMOSOMAL LOCATION

Genetic locus: SMARCC1 (human) mapping to 3p21.31; Smarcc1 (mouse) mapping to 9 F2.

SOURCE

BAF155 (DXD7) is a mouse monoclonal antibody raised against a synthetic peptide corresponding to amino acids 591-608 in the BAF155 sequence of human origin.

PRODUCT

Each vial contains 200 μ g IgG₁ kappa light chain in 1.0 ml of PBS with < 0.1% sodium azide and 0.1% gelatin. Also available as TransCruz reagent for Gel Supershift and ChIP applications, sc-32763 X, 200 μ g/0.1 ml.

BAF155 (DXD7) is available conjugated to agarose (sc-32763 AC), 500 μ g/0.25 ml agarose in 1 ml, for IP; to HRP (sc-32763 HRP), 200 μ g/ml, for WB, IHC(P) and ELISA; to either phycoerythrin (sc-32763 PE), fluorescein (sc-32763 FITC), Alexa Fluor[®] 488 (sc-32763 AF488), Alexa Fluor[®] 546 (sc-32763 AF546), Alexa Fluor[®] 594 (sc-32763 AF594) or Alexa Fluor[®] 647 (sc-32763 AF647), 200 μ g/ml, for WB (RGB), IF, IHC(P) and FCM; and to either Alexa Fluor[®] 680 (sc-32763 AF680) or Alexa Fluor[®] 790 (sc-32763 AF790), 200 μ g/ml, for Near-Infrared (NIR) WB, IF and FCM.

APPLICATIONS

BAF155 (DXD7) is recommended for detection of BAF155 of human and, to a lesser extent, mouse and rat origin by Western Blotting (starting dilution 1:1000, dilution range 1:500-1:1000), immunoprecipitation [1-2 μ g per 100-500 μ g of total protein (1 ml of cell lysate)], immunofluorescence (starting dilution 1:50, dilution range 1:50-1:500) and immunohistochemistry (including paraffin-embedded sections) (starting dilution 1:50, dilution range 1:50-1:500).

Suitable for use as control antibody for BAF155 siRNA (h): sc-29780, BAF155 siRNA (m): sc-29781, BAF155 shRNA Plasmid (h): sc-29780-SH, BAF155 shRNA Plasmid (m): sc-29781-SH, BAF155 shRNA (h) Lentiviral Particles: sc-29780-V and BAF155 shRNA (m) Lentiviral Particles: sc-29781-V.

BAF155 (DXD7) X TransCruz antibody is recommended for Gel Supershift and ChIP applications.

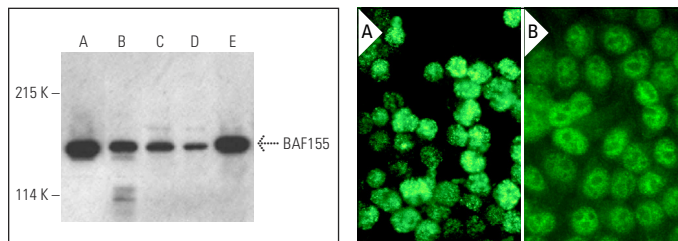
Molecular Weight of BAF155: 150 kDa.

Positive Controls: HeLa nuclear extract: sc-2120.

STORAGE

Store at 4° C, ****DO NOT FREEZE****. Stable for one year from the date of shipment. Non-hazardous. No MSDS required.

DATA



BAF155 (DXD7) HRP: sc-32763 HRP. Direct western blot analysis of BAF155 expression in Jurkat (A), NTERA-2 cl.D1 (B) and Hep G2 (C) whole cell lysates and HeLa (D) and Jurkat (E) nuclear extracts.

BAF155 (DXD7): sc-32763. Immunofluorescence staining of methanol-fixed Jurkat cells showing nuclear localization (A). Immunofluorescence staining of formalin-fixed HeLa cells showing nuclear localization (B).

SELECT PRODUCT CITATIONS

- Andersen, C.L., et al. 2009. Dysregulation of the transcription factors SOX4, CBF β and SMARCC1 correlates with outcome of colorectal cancer. *Br. J. Cancer* 100: 511-523.
- Janet, Y., et al. 2012. E2F6 associates with BRG1 in transcriptional regulation. *PLoS ONE* 7: e47967.
- Singh, A.P. and Archer, T.K. 2014. Analysis of the SWI/SNF chromatin-remodeling complex during early heart development and BAF250a repression cardiac gene transcription during P19 cell differentiation. *Nucleic Acids Res.* 42: 2958-2975.
- Zhao, D., et al. 2016. Tanshinone II A stabilizes vulnerable plaques by suppressing RAGE signaling and NF κ B activation in apolipoprotein-E-deficient mice. *Mol. Med. Rep.* 14: 4983-4990.
- Kuwamoto, S., et al. 2017. SMARCA4-deficient thoracic sarcoma: report of a case and insights into how to reach the diagnosis using limited samples and resources. *Hum. Pathol.* 70: 92-97.
- Kohashi, K., et al. 2018. SWI/SNF chromatin-remodeling complex status in SMARCB1/INI1-preserved epithelioid sarcoma. *Am. J. Surg. Pathol.* 42: 312-318.
- Kulkarni, R.A., et al. 2019. A chemoproteomic portrait of the oncometabolite fumarate. *Nat. Chem. Biol.* 15: 391-400.
- Tsuruta, S., et al. 2020. Solid-type poorly differentiated adenocarcinoma of the stomach: deficiency of mismatch repair and SWI/SNF complex. *Cancer Sci.* 111: 1008-1019.
- Szewczyk, M.M., et al. 2020. Pharmacological inhibition of PRMT7 links arginine monomethylation to the cellular stress response. *Nat. Commun.* 11: 2396.

RESEARCH USE

For research use only, not for use in diagnostic procedures. Not for resale.

Alexa Fluor[®] is a trademark of Molecular Probes, Inc., Oregon, USA