

# MCP-1 (5D3-F7): sc-32786

## BACKGROUND

The monocyte chemotactic proteins, MCP-1, MCP-2 and MCP-3, form a sub-family of the C-C (or  $\beta$ ) chemokines, which are characterized by a set of conserved adjacent cysteines. MCPs are produced by a variety of cells, including T lymphocytes, subsequent to their activation with cytokines such as IL-1, TNF $\alpha$  and IFN- $\gamma$ . MCP-1 levels are increased during infection and inflammation, which are both characterized by leukocyte infiltration. *In vitro* studies have shown that the MCP isoforms exhibit their chemotactic effects on different subpopulations of lymphocytes. MCP-1 is a potent basophil activator but does not affect eosinophils, whereas MCP-2 stimulates both eosinophils and basophils. MCP-3 has been shown to have the broadest range of influence, activating monocytes, dendritic cells, lymphocytes, natural killer cells, eosinophils, basophils and neutrophils. Two MCP-1 receptors that differ in their carboxy-termini have been identified.

## REFERENCES

1. Charo, I.F., et al. 1994. Molecular cloning and functional expression of two monocyte chemoattractant protein 1 receptors reveals alternative splicing of the carboxyl-terminal tails. *Proc. Natl. Acad. Sci. USA* 91: 2752-2756.
2. Taub, D.D., et al. 1995. Monocyte chemotactic protein-1 (MCP-1), -2, and -3 are chemotactic for human T lymphocytes. *J. Clin. Invest.* 95: 1370-1376.
3. Weber, M., et al. 1995. Monocyte chemotactic protein MCP-2 activates human basophil and eosinophil leukocytes similar to MCP-3. *J. Immunol.* 154: 4166-4172.
4. Combadiere, C., et al. 1995. Monocyte chemoattractant protein-3 is a functional ligand for C-C chemokine receptors 1 and 2B. *J. Biol. Chem.* 270: 29671-29675.
5. Proost, P., et al. 1996. Human monocyte chemotactic proteins-2 and -3: structural and functional comparison with MCP-1. *J. Leukoc. Biol.* 59: 67-74.
6. Dubois, P.M., et al. 1996. Early signal transduction by the receptor to the chemokine monocyte chemotactic protein-1 in a murine T cell hybrid. *J. Immunol.* 156: 1356-1361.
7. Beall, C.J., et al. 1996. Site-directed mutagenesis of monocyte chemoattractant protein-1 identifies two regions of the polypeptide essential for biological activity. *Biochem. J.* 313: 633-640.
8. Kuna, P., et al. 1996. Chemokines in seasonal allergic rhinitis. *J. Allergy Clin. Immunol.* 97: 104-112.

## CHROMOSOMAL LOCATION

Genetic locus: CCL2 (human) mapping to 17q12.

## SOURCE

MCP-1 (5D3-F7) is a mouse monoclonal antibody raised against recombinant MCP-1 of human origin.

## PRODUCT

Each vial contains 200  $\mu$ g IgG $_1$  kappa light chain in 1.0 ml of PBS with < 0.1% sodium azide and 0.1% gelatin.

## APPLICATIONS

MCP-1 (5D3-F7) is recommended for detection of MCP-1 of human origin by Western Blotting (starting dilution 1:100, dilution range ), immunoprecipitation [1-2  $\mu$ g per 100-500  $\mu$ g of total protein (1 ml of cell lysate)] and immunofluorescence (starting dilution 1:50, dilution range 1:50-1:500).

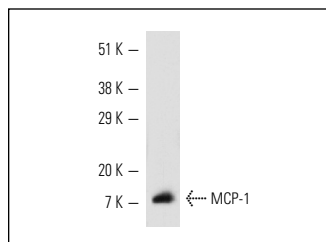
Suitable for use as control antibody for MCP-1 siRNA (h): sc-43913, MCP-1 shRNA Plasmid (h): sc-43913-SH and MCP-1 shRNA (h) Lentiviral Particles: sc-43913-V.

Molecular Weight of MCP-1: 12 kDa.

## RECOMMENDED SUPPORT REAGENTS

To ensure optimal results, the following support reagents are recommended: 1) Western Blotting: use m-IgG $\kappa$  BP-HRP: sc-516102 or m-IgG $\kappa$  BP-HRP (Cruz Marker): sc-516102-CM (dilution range: 1:1000-1:10000), Cruz Marker™ Molecular Weight Standards: sc-2035, TBS Blotto A Blocking Reagent: sc-2333 and Western Blotting Luminol Reagent: sc-2048. 2) Immunoprecipitation: use Protein A/G PLUS-Agarose: sc-2003 (0.5 ml agarose/2.0 ml). 3) Immunofluorescence: use m-IgG $\kappa$  BP-FITC: sc-516140 or m-IgG $\kappa$  BP-PE: sc-516141 (dilution range: 1:50-1:200) with UltraCruz® Mounting Medium: sc-24941 or UltraCruz® Hard-set Mounting Medium: sc-359850.

## DATA



MCP-1 (5D3-F7): sc-32786. Western blot analysis of human recombinant MCP-1.

## STORAGE

Store at 4° C, \*\*DO NOT FREEZE\*\*. Stable for one year from the date of shipment. Non-hazardous. No MSDS required.

## RESEARCH USE

For research use only, not for use in diagnostic procedures.

## PROTOCOLS

See our web site at [www.scbt.com](http://www.scbt.com) for detailed protocols and support products.



See **MCP-1-4/eotaxin (B-2): sc-377082** for MCP-1-4/eotaxin antibody conjugates, including AC, HRP, FITC, PE, Alexa Fluor® 488 and Alexa Fluor® 647.