

karyopherin β 3 siRNA (h): sc-35740

BACKGROUND

Protein transport across the nucleus is a selective, multi-step process involving several cytoplasmic factors. Proteins must be recognized as import substrates, dock at the nuclear pore complex and translocate across the nuclear envelope in an ATP-dependent fashion. Two cytosolic factors centrally involved in the recognition and docking process are the karyopherin α 1 and karyopherin β 1 subunits. Karyopherin α 1 functions in the recognition and targeting of substrates destined for nuclear import, while karyopherin β 1 serves as an adapter, tethering the karyopherin α 1/substrate complex to docking proteins on the nuclear envelope, termed nucleoporins. Karyopherin α 2 has been shown to complex with Epstein-Barr virus nuclear antigen 1 (EBNA-1). Certain RNA-binding proteins are imported to the nucleus by karyopherin β 2, and karyopherin β 3 appears to be involved in the import of some ribosomal proteins.

REFERENCES

1. Moroianu, J., et al. 1995. Previously identified protein of uncertain function is karyopherin α and together with karyopherin β docks import substrate at nuclear pore complexes. *Proc. Natl. Acad. Sci. USA* 92: 2008-2011.
2. Lounsbury, K.M., et al. 1996. Ran binding domains promote the interaction of Ran with p97/ β -karyopherin, linking the docking and translocation steps of nuclear import. *J. Biol. Chem.* 271: 2357-2360.

CHROMOSOMAL LOCATION

Genetic locus: IPO5 (human) mapping to 13q32.2.

PRODUCT

karyopherin β 3 siRNA (h) is a pool of 3 target-specific 19-25 nt siRNAs designed to knock down gene expression. Each vial contains 3.3 nmol of lyophilized siRNA, sufficient for a 10 μ M solution once resuspended using protocol below. Suitable for 50-100 transfections. Also see karyopherin β 3 shRNA Plasmid (h): sc-35740-SH and karyopherin β 3 shRNA (h) Lentiviral Particles: sc-35740-V as alternate gene silencing products.

For independent verification of karyopherin β 3 (h) gene silencing results, we also provide the individual siRNA duplex components. Each is available as 3.3 nmol of lyophilized siRNA. These include: sc-35740A, sc-35740B and sc-35740C.

STORAGE AND RESUSPENSION

Store lyophilized siRNA duplex at -20° C with desiccant. Stable for at least one year from the date of shipment. Once resuspended, store at -20° C, avoid contact with RNAses and repeated freeze thaw cycles.

Resuspend lyophilized siRNA duplex in 330 μ l of the RNase-free water provided. Resuspension of the siRNA duplex in 330 μ l of RNase-free water makes a 10 μ M solution in a 10 μ M Tris-HCl, pH 8.0, 20 mM NaCl, 1 mM EDTA buffered solution.

APPLICATIONS

karyopherin β 3 siRNA (h) is recommended for the inhibition of karyopherin β 3 expression in human cells.

SUPPORT REAGENTS

For optimal siRNA transfection efficiency, Santa Cruz Biotechnology's siRNA Transfection Reagent: sc-29528 (0.3 ml), siRNA Transfection Medium: sc-36868 (20 ml) and siRNA Dilution Buffer: sc-29527 (1.5 ml) are recommended. Control siRNAs or Fluorescein Conjugated Control siRNAs are available as 10 μ M in 66 μ l. Each contain a scrambled sequence that will not lead to the specific degradation of any known cellular mRNA. Fluorescein Conjugated Control siRNAs include: sc-36869, sc-44239, sc-44240 and sc-44241. Control siRNAs include: sc-37007, sc-44230, sc-44231, sc-44232, sc-44233, sc-44234, sc-44235, sc-44236, sc-44237 and sc-44238.

GENE EXPRESSION MONITORING

karyopherin β 3 (B-7): sc-55527 is recommended as a control antibody for monitoring of karyopherin β 3 gene expression knockdown by Western Blotting (starting dilution 1:200, dilution range 1:100-1:1000) or immunofluorescence (starting dilution 1:50, dilution range 1:50-1:500).

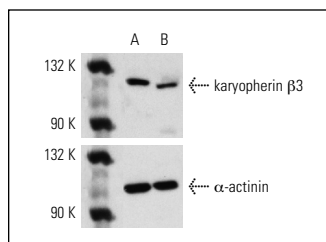
To ensure optimal results, the following support reagents are recommended:

1) Western Blotting: use m-IgG κ BP-HRP: sc-516102 or m-IgG κ BP-HRP (Cruz Marker): sc-516102-CM (dilution range: 1:1000-1:10000), Cruz Marker[™] Molecular Weight Standards: sc-2035, UltraCruz[®] Blocking Reagent: sc-516214 and Western Blotting Luminol Reagent: sc-2048. 2) Immunofluorescence: use m-IgG κ BP-FITC: sc-516140 or m-IgG κ BP-PE: sc-516141 (dilution range: 1:50-1:200) with UltraCruz[®] Mounting Medium: sc-24941 or UltraCruz[®] Hard-set Mounting Medium: sc-359850.

RT-PCR REAGENTS

Semi-quantitative RT-PCR may be performed to monitor karyopherin β 3 gene expression knockdown using RT-PCR Primer: karyopherin β 3 (h)-PR: sc-35740-PR (20 μ l). Annealing temperature for the primers should be 55-60° C and the extension temperature should be 68-72° C.

DATA



karyopherin β 3 siRNA (h): sc-35740. Western blot analysis of karyopherin β 3 expression in non-transfected control (A) and karyopherin β 3 siRNA transfected (B) HeLa cells. Blot probed with karyopherin β 3 (H-4): sc-17802. α -actinin (H-2): sc-17829 used as specificity and loading control.

RESEARCH USE

For research use only, not for use in diagnostic procedures.