

# human colon extract: sc-363757

## BACKGROUND

Santa Cruz Biotechnology offers a variety of tissue extracts for use in combination with research antibodies as Western Blotting controls. Human colon tissue extract is derived from normal, healthy human colon tissue using a preparation method (RIPA Lysis Buffer System (sc-24948)), that ensures protein integrity and lot-to-lot reproducibility. Tissue extracts are tested by Western Blotting in order to ensure each preparation contains a consistent concentration, and assortment of proteins.

## REFERENCES

1. Berney, C.R., et al. 1999. Protein markers in colorectal cancer: predictors of liver metastasis. *Ann. Surg.* 230: 179-184.
2. Elmentaite, R., et al. 2021. Cells of the human intestinal tract mapped across space and time. *Nature* 597: 250-255.
3. Qiao, Q., et al. 2021. Human  $\alpha$ -defensin 5 suppressed colon cancer growth by targeting PI3K pathway. *Exp. Cell Res.* 407: 112809.

## SOURCE

Human colon extract is derived from healthy human colon.

Organism: Homo sapiens (human)

Organ: normal human colon tissue (non-diseased)

Source: female

Infectious disease testing: HIV 1 Ab negative, HIV 2 Ab negative, Syphilis negative, HTLV negative, HCV Ab negative, HBc Ab negative, HBs Ag negative

## PRODUCT

Each vial contains 500  $\mu$ g protein in 200  $\mu$ l of an SDS-PAGE Western Blotting buffer, which consists of 100  $\mu$ l RIPA Lysis Buffer and 100  $\mu$ l Electrophoresis Buffer, 2X.

## APPLICATIONS

human colon extract is provided as a Western Blotting positive control. Recommended use is 50  $\mu$ g (20  $\mu$ l) per lane. Sample vial should be boiled once prior to use.

## PREPARATION METHOD

Frozen human colon tissues are reduced to a granular powder using a tissue crusher. Crushed tissues are suspended in solution and lysed using the RIPA Lysis Buffer System (sc-24948). The lysate is adjusted to contain 500  $\mu$ g of total cellular protein in 100  $\mu$ l before adding an equal volume of Electrophoresis Sample Buffer, 2X (sc-24945). Final concentration of product is 500  $\mu$ g total protein in a final volume of 200  $\mu$ l.

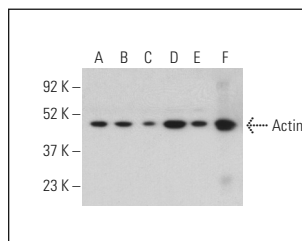
## STORAGE

Store at -20° C; stable for one year from the date of shipment. Non-hazardous. No MSDS required. Minimize repeated freezing and thawing.

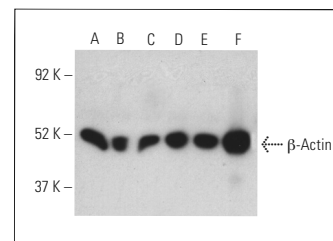
## RESEARCH USE

For research use only, not for use in diagnostic procedures.

## DATA



Actin (C-2): sc-8432. Western blot analysis of Actin expression in Jurkat (A), MCF7 (B), ZR-75-1 (C), CCRF-CEM (D) and HeLa (E) whole cell lysates and human colon tissue extract (F). Detection reagent used: m-IgG<sub>1</sub> BP-HRP: sc-525408.



$\beta$ -Actin (C4): sc-47778. Western blot analysis of  $\beta$ -Actin expression in Jurkat (A), MCF7 (B), ZR-75-1 (C), CCRF-CEM (D) and HeLa (E) whole cell lysates and human colon tissue extract (F). Detection reagent used: m-IgG<sub>1</sub> BP-HRP: sc-525408.

## PROTOCOLS

See our web site at [www.scbt.com](http://www.scbt.com) or our catalog for detailed protocols and support products.