

# human pancreas extract: sc-363770

## BACKGROUND

Santa Cruz Biotechnology, Inc. offers a range of mammalian organ tissue protein extracts for use in combination with research antibodies as Western blotting controls. Human (*Homo sapiens*), mouse (*Mus musculus*), and rat (*Rattus norvegicus*) whole tissue extracts are derived from normal, healthy, and non-diseased tissue specimens. Mouse and rat animals are maintained under controlled conditions, and determined in good health by DVM. Human cadaver tissue via patient consent, are with infectious disease and serological testing. Whole tissue extraction preparation methodology (RIPA Lysis Buffer System (sc-24948)) ensures both protein integrity, and lot-to-lot reproducibility. Tissue extracts are tested by western blotting in order to ensure, that each preparation contains a consistent concentration and assortment of proteins.

## SOURCE

Organism: *Homo sapiens* (human)  
 Organ: Normal human pancreas (non-diseased)  
 Source: Human pancreas extract is derived from ethically sourced human pancreas via patient consent donors.

Infectious disease testing: Serological testing; human immunodeficiency virus (HIV 1 Ab, HIV 2 Ab) negative, syphilis (STS) negative, human T-cell leukemia virus type (HTLV) negative, hepatitis C (HCV) Ab negative, hepatitis B core (HBc) Ab negative, hepatitis B surface antigen (HBs Ag) negative, nucleic acid testing hepatitis B (NATB) negative, nucleic acid testing hepatitis C (NATC) negative, West Nile virus (WNV) negative.

## PRODUCT

Each vial contains 500 µg protein in 200 µl of an SDS-PAGE Western Blotting buffer, which consists of 100 µl RIPA Lysis Buffer (sc-24948) and 100 µl Electrophoresis Sample Buffer, 2X (sc-24945).

## APPLICATIONS

human pancreas extract is provided as a Western Blotting positive control. Recommended use is 50 µg (20 µl) per lane. Tissue extract vial should be placed at 95° C for 3- 5 minutes once prior to use.

## PREPARATION METHOD

Frozen tissues are reduced to a granular powder using a mechanical tissue grinder. Tissues are then suspended in a lysis solution (RIPA Lysis Buffer System (sc-24948)), and undergo sonication. Insoluble cellular debris removal is performed by centrifugation. The tissue extraction is adjusted to contain 500 µg of total cellular protein in 100 µl before adding an equal 100 µl volume of Electrophoresis Sample Buffer, 2X (sc-24945). Final concentration of product is 500 µg total protein in a final volume of 200 µl.

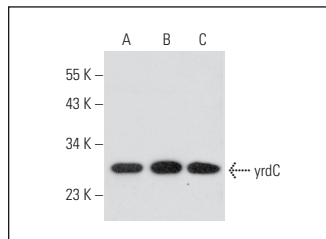
## PRODUCT

Each vial contains 500 µg protein in 200 µl of an SDS-PAGE Western Blotting buffer, which consists of 100 µl RIPA Lysis Buffer and 100 µl Electrophoresis Buffer, 2X.

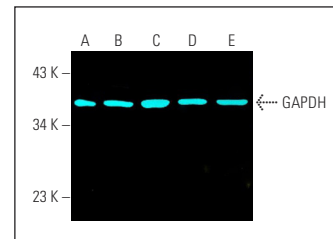
## STORAGE

Store at -20° C, avoid repeated freeze/thaw cycles. Stable for one year from the date of shipment. Non-hazardous. No MSDS required.

## DATA



yrdC (E-10): sc-390477. Western blot analysis of yrdC expression in PANC-1 (A) and MIA PaCa-2 (B) whole cell lysates and human pancreas tissue extract (C).



GAPDH (D-6) Alexa Fluor<sup>®</sup> 647: sc-166545 AF647. Direct fluorescent western blot analysis of GAPDH expression in NIH/3T3 (A), Hep G2 (B), HeLa (C) and A549 (D) whole cell lysates and human pancreas tissue extract (E). Blocked with UltraCruz<sup>®</sup> Blocking Reagent: sc-516214.

## RESEARCH USE

For research use only, not for use in diagnostic procedures.

## PROTOCOLS

See our web site at [www.scbt.com](http://www.scbt.com) for detailed protocols and support products.