

HUV-EC-C Whole Cell Lysate: sc-364180

BACKGROUND

Santa Cruz Biotechnology offers a variety of whole cell lysates for use in combination with our antibodies as Western Blotting controls. HUV-EC-C Whole Cell Lysate is derived from the HUV-EC-C cell line using a procedure that ensures protein integrity and lot-to-lot reproducibility. All lysates are tested by Western Blotting to assure that each one contains the expected concentration and assortment of proteins. Numerous antibodies directed against a wide array of mammalian proteins are used to test each lysate.

Endothelial Cell Growth Supplement (ECGS) and unidentified factors from bovine pituitary, hypothalamus or whole brain extracts are mitogenic for the HUV-EC-C line. The cells have a life expectancy of 50 to 60 population doublings.

REFERENCES

- Hoshi, H. and McKeenan, W.L. 1984. Brain- and liver cell-derived factors are required for growth of human endothelial cells in serum-free culture. *Proc. Natl. Acad. Sci. USA* 81: 6413-6417.
- Soker, S., Fidder, H., Neufeld, G. and Klagsbrun, M. 1996. Characterization of novel vascular endothelial growth factor (VEGF) receptors on tumor cells that bind VEGF165 via its exon 7-encoded domain. *J. Biol. Chem.* 271: 5761-5767.
- Zahedi, K. 1997. Characterization of the binding of serum amyloid P to laminin. *J. Biol. Chem.* 272: 2143-2148.

SOURCE

HUV-EC-C Whole Cell Lysate is derived from the HUV-EC-C cell line.

Organism: *Homo sapiens* (human)
Organ: Umbilical vein
Tissue: Vascular endothelium
Disease: Normal
Cell Type: Endothelia
Growth Properties: Adherent

PRODUCT

Each vial contains 500 µg protein in 200 µl of an SDS-PAGE Western Blotting buffer, which consists of 100 µl RIPA Lysis Buffer and 100 µl Electrophoresis Buffer, 2X.

APPLICATIONS

HUV-EC-C Whole Cell Lysate is provided as a Western Blotting positive control. Recommended use is 50 µg (20 µl) per lane. Sample vial should be boiled once prior to use.

STORAGE

Store at -20° C; stable for one year from the date of shipment. Non-hazardous. No MSDS required. Minimize repeated freezing and thawing.

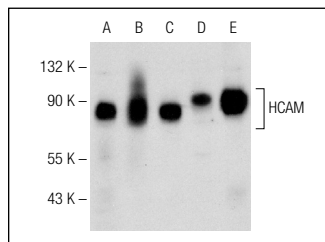
RESEARCH USE

For research use only, not for use in diagnostic procedures.

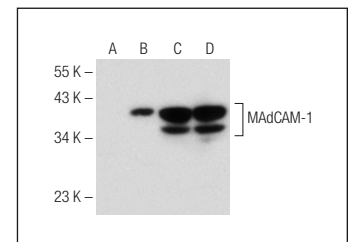
PREPARATION METHOD

Cells are cultured with appropriate media conditions and allowed to reach a confluency of 75%. Cells are lysed using the RIPA Lysis Buffer System (sc-24948). The BCA Protein Assay Kit (sc-202389) is used to determine the total protein concentration. The lysate is adjusted to contain 500 µg of total cellular protein in 100 µl before adding an equal volume of Electrophoresis Sample Buffer, 2X (sc-24945). Final concentration of product is 500 µg total protein in a final volume of 200 µl.

DATA



HCAM (H-300): sc-7946. Western blot analysis of HCAM expression in HUV-EC-C (A), human PBL (B), HeLa (C), U-937 (D) and WI 38 (E) whole cell lysates.



MAdCAM-1 (F-6): sc-374398. Western blot analysis of MAdCAM-1 expression in non-transfected 293T: sc-117752 (A), mouse MAdCAM-1 transfected 293T: sc-121483 (B), ECV304 (C) and HUV-EC-C (D) whole cell lysates.

PROTOCOLS

See our web site at www.scbt.com or our catalog for detailed protocols and support products.