

# SK-OV-3 Whole Cell Lysate: sc-364229

## BACKGROUND

Santa Cruz Biotechnology offers a variety of whole cell lysates for use in combination with our antibodies as Western Blotting controls. SK-OV-3 Whole Cell Lysate is derived from the SK-OV-3 cell line using a procedure that ensures protein integrity and lot-to-lot reproducibility. All lysates are tested by Western Blotting to assure that each one contains the expected concentration and assortment of proteins. Numerous antibodies directed against a wide array of mammalian proteins are used to test each lysate. SK-OV-3 cells are resistant to tumor necrosis factor (TNF) and to several cytotoxic drugs, including diphtheria toxin, *cis*-platinum and adriamycin.

## REFERENCES

1. Fogh, J., ed. 1975. Human tumor cells *in vitro*. New York: Springer.
2. Fogh, J., Wright, W.C. and Loveless, J.D. 1977. Absence of HeLa cell contamination in 169 cell lines derived from human tumors. J. Natl. Cancer Inst. 58: 209-214.
3. Fogh, J., Fogh, J.M. and Orfeo, T. 1977. One hundred and twenty-seven cultured human tumor cell lines producing tumors in nude mice. J. Natl. Cancer Inst. 59: 221-226.
4. Morimoto, H., Yonehara, S. and Bonavida, B. 1993. Overcoming tumor necrosis factor and drug resistance of human tumor cell lines by combination treatment with anti-Fas antibody and drugs or toxins. Cancer Res. 53: 2591-2596.

## SOURCE

SK-OV-3 Whole Cell Lysate is derived from the SK-OV-3 cell line.

Organism: *Homo sapiens* (human)  
Tissue: Ovary  
Disease: Adenocarcinoma  
Cell Type: Epithelial  
Growth Properties: Adherent

## PRODUCT

Each vial contains 500 µg protein in 200 µl of an SDS-PAGE Western Blotting buffer, which consists of 100 µl RIPA Lysis Buffer and 100 µl Electrophoresis Buffer, 2X.

## APPLICATIONS

SK-OV-3 Whole Cell Lysate is provided as a Western Blotting positive control. Recommended use is 50 µg (20 µl) per lane. Sample vial should be boiled once prior to use.

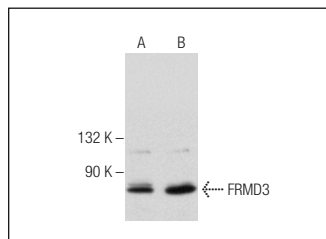
## PREPARATION METHOD

Cells are cultured with appropriate media conditions and allowed to reach a confluency of 75%. Cells are lysed using the RIPA Lysis Buffer System (sc-24948). The BCA Protein Assay Kit (sc-202389) is used to determine the total protein concentration. The lysate is adjusted to contain 500 µg of total cellular protein in 100 µl before adding an equal volume of Electrophoresis Sample Buffer, 2X (sc-24945). Final concentration of product is 500 µg total protein in a final volume of 200 µl.

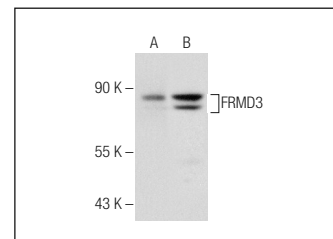
## STORAGE

Store at -20° C; stable for one year from the date of shipment. Non-hazardous. No MSDS required. Minimize repeated freezing and thawing.

## DATA



FRMD3 (A-14): sc-164431. Western blot analysis of FRMD3 expression in SK-OV-3 (A) and SHP-77 (B) whole cell lysates.



FRMD3 (D-16): sc-164432. Western blot analysis of FRMD3 expression in OV-90 (A) and SK-OV-3 (B) whole cell lysates.

## RESEARCH USE

For research use only, not for use in diagnostic procedures.

## PROTOCOLS

See our web site at [www.scbt.com](http://www.scbt.com) or our catalog for detailed protocols and support products.