

CSMLO Whole Cell Lysate: sc-364369

BACKGROUND

Santa Cruz Biotechnology, Inc. offers a range of mammalian protein whole cell lysates for your proteomics research. Human (*Homo sapiens*), mouse (*Mus musculus*), and rat (*Rattus norvegicus*) whole cell lysates are enriched from in vitro suspension-type, or adherent-type cell cultures, that are maintained under controlled conditions, and according to each lineage specific cell culture specification. Immunoprecipitation (IP)-ready mammalian whole cell lysates contain non-denatured/intact proteins, and are suitable for antibody-dependent enrichment of endogenous proteins. Western blotting (WB)-ready mammalian whole cell lysates for SDS-PAGE contain denatured and reduced proteins, from endogenous or transfected 293T cell sources, and are suitable for use as Western blotting protein expression controls. Protein extraction methodology (RIPA Lysis Buffer System, (sc-24948)) ensures both protein integrity, and lot-to-lot reproducibility. Each whole cell preparation contains a consistent concentration and assortment of membrane, nuclear, and cytosolic proteins.

SOURCE

CSMLO Whole Cell Lysate has higher endogenous levels of kaiso and the HCT116 cell line has been transfected with a construct (LZRSmsGFP/kaiso) that allows it to produce a GFP protein and the kaiso protein separately from the same IRES. The cells can be facs sorted and correlate the GFP expression directly to the kaiso expression.

PRODUCT

Western blotting (WB)-ready (denatured and reduced protein) endogenous whole cell lysates are ready to load for SDS-PAGE, and are provided in a single vial. Each vial contains 500 µg protein in 200 µl [2.5 µg/µl], containing 2X Electrophoresis Sample Buffer (sc-24945).

APPLICATIONS

Western blotting (WB)-ready endogenous mammalian protein whole cell lysates (for SDS-PAGE) are provided at a final concentration of 500 µg protein in 200 µl [2.5 µg/µl]. Thaw/heat at 95° C for 3-5 minutes. For endogenous controls, load up to 20 µl (50 µg) per lane (15 well (8.0 cm x 8.0 cm) gel).

PREPARATION METHOD

Mammalian cells are cultured *in vitro* under an appropriate buffered media condition to either an optimal suspension cell density, or optimal adherent cell sub-confluency. Cells are then harvested from cell culture media for protein extraction using the RIPA Lysis Buffer System (sc-24948). Bicinchoninic acid (BCA) protein assay calibration determines the protein concentration for each preparation. Western blotting (WB)-ready endogenous whole cell lysates contain 500 µg protein in 200 µl [2.5 µg/µl] at 1:1 with 2X Electrophoresis Sample Buffer (sc-24945).

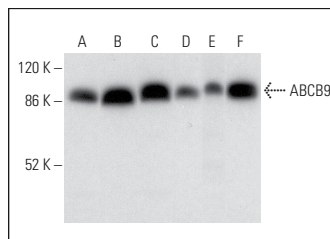
STORAGE

Store at -20° C, avoid repeated freeze/thaw cycles. Stable for one year from the date of shipment. Non-hazardous. No MSDS required.

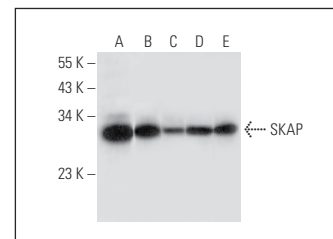
RESEARCH USE

For research use only, not for use in diagnostic procedures.

DATA



ABCB9 (E-2): sc-393431. Western blot analysis of ABCB9 expression in JC (A), CSMLO (B), NIH/3T3 (C), RAW 264.7 (D), WR19L (E) and M1 (F) whole cell lysates.



SKAP (F-11): sc-514112. Western blot analysis of SKAP expression in RAW 264.7 (A), F9 (B), CSMLO (C) and NIH/3T3 (D) whole cell lysates and NIH/3T3 nuclear extract (E).

PROTOCOLS

See our web site at www.scbt.com for detailed protocols and support products.