

DcR1 (C-6): sc-365279

BACKGROUND

Tumor necrosis factor (TNF) is a pleiotropic cytokine whose function is mediated by two distinct cell surface receptors, designated TNF-R1 and TNF-R2, which are expressed on most cell types. TNF function is primarily mediated through TNF-R1 signaling. Both receptors belong to the growing TNF receptor superfamily which includes FAS antigen and CD40. TNF-R1 contains a cytoplasmic motif, termed the "death domain," that has been found to be necessary for the transduction of the apoptotic signal. The death domain is also found in several other receptors, including FAS, DR2 (or TRUND), DR3 (death receptor 3), DR4, DR5 and DR6. TRUND, DR4 and DR5 are receptors for the apoptosis-inducing cytokine TRAIL. Non-death domain-containing receptors, designated decoy receptor 1 (DcR1) or TRID, DcR2 and DcR3, associate with specific ligands and may play a role in cellular resistance to apoptotic stimuli.

REFERENCES

1. Tartaglia, L.A., et al. 1993. A novel domain within the 55 kd TNF receptor signals cell death. *Cell* 74: 845-853.
2. Smith, C.A., et al. 1994. The TNF receptor superfamily of cellular and viral proteins: activation, costimulation, and death. *Cell* 76: 959-962.
3. Nagata, S., et al. 1995. The FAS death factor. *Science* 267: 1449-1456.
4. Kitson, J., et al. 1996. A death-domain-containing receptor that mediates apoptosis. *Nature* 384: 372-375.
5. Pan, G., et al. 1997. The receptor for the cytotoxic ligand TRAIL. *Science* 276: 111-113.
6. Pan, G., et al. 1997. An antagonist decoy receptor and a death domain-containing receptor for TRAIL. *Science* 277: 815-818.
7. Sheridan, J.P., et al. 1997. Control of TRAIL-induced apoptosis by a family of signaling and decoy receptors. *Science* 277: 818-821.

CHROMOSOMAL LOCATION

Genetic locus: TNFRSF10C (human) mapping to 8p21.3.

SOURCE

DcR1 (C-6) is a mouse monoclonal antibody raised against amino acids 131-259 mapping at the C-terminus of DcR1 of human origin.

PRODUCT

Each vial contains 200 µg IgG_{2a} kappa light chain in 1.0 ml of PBS with < 0.1% sodium azide and 0.1% gelatin.

DcR1 (C-6) is available conjugated to agarose (sc-365279 AC), 500 µg/0.25 ml agarose in 1 ml, for IP; to HRP (sc-365279 HRP), 200 µg/ml, for WB, IHC(P) and ELISA; to either phycoerythrin (sc-365279 PE), fluorescein (sc-365279 FITC), Alexa Fluor[®] 488 (sc-365279 AF488), Alexa Fluor[®] 546 (sc-365279 AF546), Alexa Fluor[®] 594 (sc-365279 AF594) or Alexa Fluor[®] 647 (sc-365279 AF647), 200 µg/ml, for WB (RGB), IF, IHC(P) and FCM; and to either Alexa Fluor[®] 680 (sc-365279 AF680) or Alexa Fluor[®] 790 (sc-365279 AF790), 200 µg/ml, for Near-Infrared (NIR) WB, IF and FCM.

APPLICATIONS

DcR1 (C-6) is recommended for detection of precursor and mature DcR1 of human origin by Western Blotting (starting dilution 1:100, dilution range 1:100-1:1000), immunoprecipitation [1-2 µg per 100-500 µg of total protein (1 ml of cell lysate)], immunofluorescence (starting dilution 1:50, dilution range 1:50-1:500) and solid phase ELISA (starting dilution 1:30, dilution range 1:30-1:3000).

Suitable for use as control antibody for DcR1 siRNA (h): sc-40235, DcR1 shRNA Plasmid (h): sc-40235-SH and DcR1 shRNA (h) Lentiviral Particles: sc-40235-V.

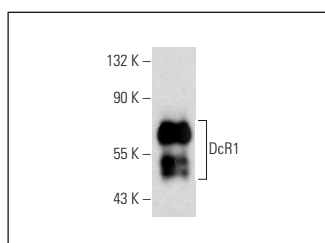
Molecular Weight of DcR1: 70 kDa.

Positive Controls: Raji whole cell lysate: sc-364236, K-562 whole cell lysate: sc-2203 or Jurkat whole cell lysate: sc-2204.

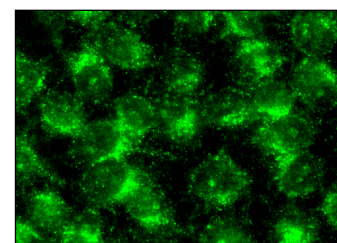
RECOMMENDED SUPPORT REAGENTS

To ensure optimal results, the following support reagents are recommended: 1) Western Blotting: use m-IgGκ BP-HRP: sc-516102 or m-IgGκ BP-HRP (Cruz Marker): sc-516102-CM (dilution range: 1:1000-1:10000), Cruz Marker[™] Molecular Weight Standards: sc-2035, UltraCruz[®] Blocking Reagent: sc-516214 and Western Blotting Luminol Reagent: sc-2048. 2) Immunoprecipitation: use Protein A/G PLUS-Agarose: sc-2003 (0.5 ml agarose/2.0 ml). 3) Immunofluorescence: use m-IgGκ BP-FITC: sc-516140 or m-IgGκ BP-PE: sc-516141 (dilution range: 1:50-1:200) with UltraCruz[®] Mounting Medium: sc-24941 or UltraCruz[®] Hard-set Mounting Medium: sc-359850.

DATA



DcR1 (C-6): sc-365279. Western blot analysis of DcR1 expression in human PBL whole cell lysate.



DcR1 (C-6): sc-365279. Immunofluorescence staining of methanol-fixed HeLa cells showing cytoplasmic localization.

STORAGE

Store at 4° C, **DO NOT FREEZE**. Stable for one year from the date of shipment. Non-hazardous. No MSDS required.

RESEARCH USE

For research use only, not for use in diagnostic procedures.

PROTOCOLS

See our web site at www.scbt.com for detailed protocols and support products.

Alexa Fluor[®] is a trademark of Molecular Probes, Inc., Oregon, USA