

MBD4 (A-8): sc-365974

BACKGROUND

Methylation of DNA contributes to the regulation of gene transcription in both mammalian and invertebrate systems. DNA methylation predominates on cytosine residues that are present in dinucleotide motifs consisting of a 5' cytosine followed by guanosine (CpG), and it requires the enzymatic activity of DNA methyltransferase, which results in transcriptional repression of the methylated gene. Several proteins have been identified that associate with the methyl-CpG sites, and they include methyl-CpG binding protein-1 (MBD1), MBD2, MBD3 and MeCP2. Expression of the MBD proteins is highest in somatic tissues. MBD1 binds in a context specific manner to methyl-CpG rich domains and, in turn, mediates the transcriptional inhibition that is commonly observed with DNA methylation. Similarly, MBD2 inhibits transcription of methylated genes by associating with histone deacetylase (HDAC1) within the MeCP1 repressor complex. In addition, MBD4, which is also designated MED1, associates with the mismatch repair protein MLH1 and preferentially binds to methylated cytosine residues in mismatched base pairs. MeCP2 binds tightly to chromosomes in a methylation-dependent manner and associates with a corepressor complex containing the transcriptional repressor mSin3A and histone deacetylases.

CHROMOSOMAL LOCATION

Genetic locus: MBD4 (human) mapping to 3q21.3; Mbd4 (mouse) mapping to 6 E3.

SOURCE

MBD4 (A-8) is a mouse monoclonal antibody raised against amino acids 281-580 mapping near the C-terminus of MBD4 of human origin.

PRODUCT

Each vial contains 200 µg IgG_{2a} kappa light chain in 1.0 ml of PBS with < 0.1% sodium azide and 0.1% gelatin.

STORAGE

Store at 4° C, ****DO NOT FREEZE****. Stable for one year from the date of shipment. Non-hazardous. No MSDS required.

APPLICATIONS

MBD4 (A-8) is recommended for detection of MBD4 of mouse, rat and human origin by Western Blotting (starting dilution 1:100, dilution range 1:100-1:1000), immunoprecipitation [1-2 µg per 100-500 µg of total protein (1 ml of cell lysate)], immunofluorescence (starting dilution 1:50, dilution range 1:50-1:500) and solid phase ELISA (starting dilution 1:30, dilution range 1:30-1:3000).

Suitable for use as control antibody for MBD4 siRNA (h): sc-37763, MBD4 siRNA (m): sc-37764, MBD4 shRNA Plasmid (h): sc-37763-SH, MBD4 shRNA Plasmid (m): sc-37764-SH, MBD4 shRNA (h) Lentiviral Particles: sc-37763-V and MBD4 shRNA (m) Lentiviral Particles: sc-37764-V.

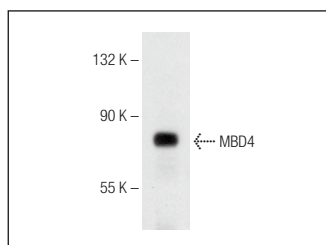
Molecular Weight of MBD4: 66 kDa.

Positive Controls: HeLa nuclear extract: sc-2120 or NIH/3T3 nuclear extract: sc-2138 or NIH/3T3 whole cell lysate: sc-2210.

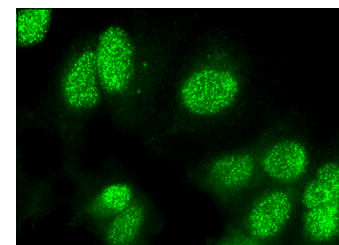
RECOMMENDED SUPPORT REAGENTS

To ensure optimal results, the following support reagents are recommended: 1) Western Blotting: use m-IgGκ BP-HRP: sc-516102 or m-IgGκ BP-HRP (Cruz Marker): sc-516102-CM (dilution range: 1:1000-1:10000), Cruz Marker™ Molecular Weight Standards: sc-2035, UltraCruz® Blocking Reagent: sc-516214 and Western Blotting Luminol Reagent: sc-2048. 2) Immunoprecipitation: use Protein A/G PLUS-Agarose: sc-2003 (0.5 ml agarose/2.0 ml). 3) Immunofluorescence: use m-IgGκ BP-FITC: sc-516140 or m-IgGκ BP-PE: sc-516141 (dilution range: 1:50-1:200) with UltraCruz® Mounting Medium: sc-24941 or UltraCruz® Hard-set Mounting Medium: sc-359850.

DATA



MBD4 (A-8): sc-365974. Western blot analysis of MBD4 expression in SK-MEL-28 nuclear extract.



MBD4 (A-8): sc-365974. Immunofluorescence staining of formalin-fixed Hep G2 cells showing nuclear localization.

SELECT PRODUCT CITATIONS

- Karpurapu, M., et al. 2014. Krüppel like factor 4 promoter undergoes active demethylation during monocyte/macrophage differentiation. *PLoS ONE* 9: e93362.
- Zhang, Y., et al. 2018. Epigenetic silencing of RNF144A expression in breast cancer cells through promoter hypermethylation and MBD4. *Cancer Med.* 7: 1317-1325.
- Yang, M., et al. 2020. Methylation-induced silencing of ALDH2 facilitates lung adenocarcinoma bone metastasis by activating the MAPK pathway. *Front. Oncol.* 10: 1141.

RESEARCH USE

For research use only, not for use in diagnostic procedures.

PROTOCOLS

See our web site at www.scbt.com for detailed protocols and support products.