

# CYP3A43 (H-41): sc-368034

## BACKGROUND

Chromosome 7 is about 158 million bases long, encodes over 1,000 genes and makes up about 5% of the human genome. Chromosome 7 has been linked to osteogenesis imperfecta, Pendred syndrome, lissencephaly, citrullinemia and Shwachman-Diamond syndrome. The deletion of a portion of the q arm of chromosome 7 is associated with Williams-Beuren syndrome, a condition characterized by mild mental retardation, an unusual countenance and friendliness with strangers and an elfin appearance. Deletions of portions of the q arm of chromosome 7 are also seen in a number of myeloid disorders including cases of acute myelogenous leukemia and myelodysplasia.

## REFERENCES

1. Tspirouras, P., et al. 1983. Restriction fragment length polymorphism associated with the pro  $\alpha 2$  (I) gene of human type I procollagen. Application to a family with an autosomal dominant form of osteogenesis imperfecta. *J. Clin. Invest.* 72: 1262-1267.
2. Liang, H., et al. 1998. Molecular anatomy of chromosome 7q deletions in myeloid neoplasms: evidence for multiple critical loci. *Proc. Natl. Acad. Sci. USA* 95: 3781-3785.
3. Hillier, L.W., et al. 2003. The DNA sequence of human chromosome 7. *Nature* 424: 157-164.
4. Eckert, M.A., et al. 2006. The neurobiology of Williams syndrome: cascading influences of visual system impairment? *Cell. Mol. Life Sci.* 63: 1867-1875.

## CHROMOSOMAL LOCATION

Genetic locus: CYP3A43 (human) mapping to 7q22.1.

## SOURCE

CYP3A43 (H-41) is a rabbit polyclonal antibody raised against amino acids 48-88 mapping near the N-terminus of CYP3A43 of human origin.

## PRODUCT

Each vial contains 200  $\mu$ g IgG in 1.0 ml of PBS with < 0.1% sodium azide and 0.1% gelatin.

## APPLICATIONS

CYP3A43 (H-41) is recommended for detection of CYP3A43 of human origin by Western Blotting (starting dilution 1:200, dilution range 1:100-1:1000), immunoprecipitation [1-2  $\mu$ g per 100-500  $\mu$ g of total protein (1 ml of cell lysate)], immunofluorescence (starting dilution 1:50, dilution range 1:50-1:500) and solid phase ELISA (starting dilution 1:30, dilution range 1:30-1:3000).

Suitable for use as control antibody for CYP3A43 siRNA (h): sc-105258, CYP3A43 shRNA Plasmid (h): sc-105258-SH and CYP3A43 shRNA (h) Lentiviral Particles: sc-105258-V.

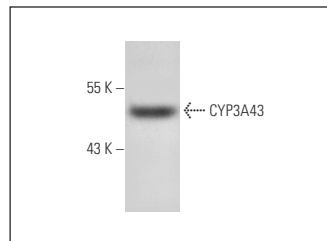
Molecular Weight of CYP3A43 isoforms: 58/58/48/28 kDa.

Positive Controls: human liver extract: sc-363766.

## RECOMMENDED SECONDARY REAGENTS

To ensure optimal results, the following support (secondary) reagents are recommended: 1) Western Blotting: use goat anti-rabbit IgG-HRP: sc-2004 (dilution range: 1:2000-1:100,000) or Cruz Marker™ compatible goat anti-rabbit IgG-HRP: sc-2030 (dilution range: 1:2000-1:5000), Cruz Marker™ Molecular Weight Standards: sc-2035, TBS Blotto A Blocking Reagent: sc-2333 and Western Blotting Luminol Reagent: sc-2048. 2) Immunoprecipitation: use Protein A/G PLUS-Agarose: sc-2003 (0.5 ml agarose/2.0 ml). 3) Immunofluorescence: use goat anti-rabbit IgG-FITC: sc-2012 (dilution range: 1:100-1:400) or goat anti-rabbit IgG-TR: sc-2780 (dilution range: 1:100-1:400) with UltraCruz™ Mounting Medium: sc-24941.

## DATA



CYP3A43 (H-41): sc-368034. Western blot analysis of CYP3A43 expression in human liver tissue extract.

## STORAGE

Store at 4° C, \*\*DO NOT FREEZE\*\*. Stable for one year from the date of shipment. Non-hazardous. No MSDS required.

## RESEARCH USE

For research use only, not for use in diagnostic procedures.

## PROTOCOLS

See our web site at [www.scbt.com](http://www.scbt.com) or our catalog for detailed protocols and support products.


 MONOS  
Satisfaction  
Guaranteed

Try **CYP3A43 (E-9): sc-393860**, our highly recommended monoclonal alternative to CYP3A43 (H-41).