

# TBRG4 (B-1): sc-373752

## BACKGROUND

TBRG4 (transforming growth factor  $\beta$  regulator 4), also known as CPR2 (cell cycle progression restoration protein 2) or FASTKD4 (FAST kinase domain-containing protein 4), is a 631 amino acid protein that contains one RAP domain and belongs to the FAST kinase family. TBRG4 is ubiquitously expressed and may have a role in cell cycle progression. Existing as two alternatively spliced isoforms, the gene encoding TBRG4 maps to human chromosome 7p13. Chromosome 7 is approximately 158 million bases long, encodes over 1,000 genes and makes up about 5% of the human genome. Chromosome 7 has been linked to Osteogenesis imperfecta, Pendred syndrome, Lissencephaly, Citrullinemia and Shwachman-Diamond syndrome. The deletion of a portion of the q arm of chromosome 7 is associated with Williams-Beuren syndrome, a condition characterized by mild mental retardation, an unusual comfort and friendliness with strangers and an elfin appearance. Deletions of portions of the q arm of chromosome 7 are also seen in a number of myeloid disorders including cases of acute myelogenous leukemia and myelodysplasia.

## REFERENCES

1. Tsipouras, P., et al. 1983. Restriction fragment length polymorphism associated with the pro  $\alpha$  2(I) gene of human type I procollagen. Application to a family with an autosomal dominant form of osteogenesis imperfecta. *J. Clin. Invest.* 72: 1262-1267.
2. Liang, H., et al. 1998. Molecular anatomy of chromosome 7q deletions in myeloid neoplasms: evidence for multiple critical loci. *Proc. Natl. Acad. Sci. USA* 95: 3781-3785.
3. Hillier, L.W., et al. 2003. The DNA sequence of human chromosome 7. *Nature* 424: 157-164.
4. Eckert, M.A., et al. 2006. The neurobiology of Williams syndrome: cascading influences of visual system impairment? *Cell. Mol. Life Sci.* 63: 1867-1875.
5. Aglipay, J.A., et al. 2006. ATM activation by ionizing radiation requires BRCA1-associated BAAT1. *J. Biol. Chem.* 281: 9710-9718.
6. Osborne, L.R., et al. 2006. Williams-Beuren syndrome diagnosis using fluorescence *in situ* hybridization. *Methods Mol. Med.* 126: 113-128.
7. Reiner, O., et al. 2006. Lissencephaly 1 linking to multiple diseases: mental retardation, neurodegeneration, schizophrenia, male sterility, and more. *Neuromolecular Med.* 8: 547-565.

## CHROMOSOMAL LOCATION

Genetic locus: TBRG4 (human) mapping to 7p13.

## SOURCE

TBRG4 (B-1) is a mouse monoclonal antibody raised against amino acids 370-631 mapping at the C-terminus of TBRG4 of human origin.

## PRODUCT

Each vial contains 200  $\mu$ g IgG<sub>2b</sub> kappa light chain in 1.0 ml of PBS with < 0.1% sodium azide and 0.1% gelatin.

## APPLICATIONS

TBRG4 (B-1) is recommended for detection of TBRG4 of human origin by Western Blotting (starting dilution 1:100, dilution range 1:100-1:1000), immunoprecipitation [1-2  $\mu$ g per 100-500  $\mu$ g of total protein (1 ml of cell lysate)], immunofluorescence (starting dilution 1:50, dilution range 1:50-1:500) and solid phase ELISA (starting dilution 1:30, dilution range 1:30-1:3000).

Suitable for use as control antibody for TBRG4 siRNA (h): sc-89508, TBRG4 shRNA Plasmid (h): sc-89508-SH and TBRG4 shRNA (h) Lentiviral Particles: sc-89508-V.

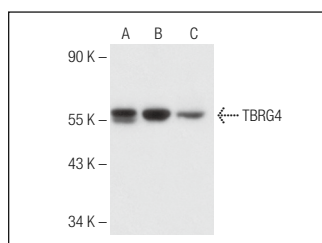
Molecular Weight of TBRG4 isoforms 1/2: 71/58 kDa.

Positive Controls: HeLa whole cell lysate: sc-2200, Hep G2 cell lysate: sc-2227 or human liver extract: sc-363766.

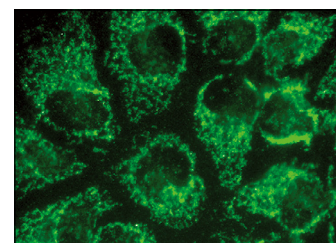
## RECOMMENDED SUPPORT REAGENTS

To ensure optimal results, the following support reagents are recommended: 1) Western Blotting: use m-IgG $\kappa$  BP-HRP: sc-516102 or m-IgG $\kappa$  BP-HRP (Cruz Marker): sc-516102-CM (dilution range: 1:1000-1:10000), Cruz Marker™ Molecular Weight Standards: sc-2035, UltraCruz® Blocking Reagent: sc-516214 and Western Blotting Luminol Reagent: sc-2048. 2) Immunoprecipitation: use Protein A/G PLUS-Agarose: sc-2003 (0.5 ml agarose/2.0 ml). 3) Immunofluorescence: use m-IgG $\kappa$  BP-FITC: sc-516140 or m-IgG $\kappa$  BP-PE: sc-516141 (dilution range: 1:50-1:200) with UltraCruz® Mounting Medium: sc-24941 or UltraCruz® Hard-set Mounting Medium: sc-359850.

## DATA



TBRG4 (B-1): sc-373752. Western blot analysis of TBRG4 expression in Hep G2 (A) and HeLa (B) whole cell lysates and human liver tissue extract (C).



TBRG4 (B-1): sc-373752. Immunofluorescence staining of methanol-fixed HeLa cells showing cytoplasmic localization.

## STORAGE

Store at 4° C, \*\*DO NOT FREEZE\*\*. Stable for one year from the date of shipment. Non-hazardous. No MSDS required.

## RESEARCH USE

For research use only, not for use in diagnostic procedures.

## PROTOCOLS

See our web site at [www.scbt.com](http://www.scbt.com) for detailed protocols and support products.