

IRF-2BP1 (A-10): sc-373899

BACKGROUND

IRF-2 (interferon regulatory factor-2) has been identified as a novel DNA-binding factor that functions as a regulator of both type I interferon (interferon- α and β) and interferon-inducible genes. IRF-2 may act in a mutually antagonistic manner in regulating cell growth. IRF-2BP1 (interferon regulatory factor 2 binding protein 1) is a 584 amino acid nuclear protein belonging to the IRF-2BP family. IRF-2BP1 acts as a corepressor of IRF-2 that can inhibit both enhancer-activation and basal transcription in a manner that is not dependent upon histone deacetylation. IRF-2BP1 enhances the polyubiquitination of JDP2 (Jun-dimerization protein 2), a member of the c-Jun family of transcription factors. IRF-2BP1 contains a C-terminal RING-type zinc finger domain, which is necessary for interaction with BAP1 (BRCA1 associated protein 1). IRF-2BP1 is encoded by a gene located on human chromosome 19, which consists of over 63 million bases, houses approximately 1,400 genes and is recognized for having the greatest gene density of the human chromosomes.

CHROMOSOMAL LOCATION

Genetic locus: IRF2BP1 (human) mapping to 19q13.32; Irf2bp1 (mouse) mapping to 7 A3.

SOURCE

IRF-2BP1 (A-10) is a mouse monoclonal antibody specific for an epitope mapping between amino acids 327-355 within an internal region of IRF-2BP1 of human origin.

PRODUCT

Each vial contains 200 μ g IgG₁ kappa light chain in 1.0 ml of PBS with < 0.1% sodium azide and 0.1% gelatin. Also available as TransCruz reagent for Gel Supershift and ChIP applications, sc-373899 X, 200 μ g/0.1 ml.

IRF-2BP1 (A-10) is available conjugated to agarose (sc-373899 AC), 500 μ g/0.25 ml agarose in 1 ml, for IP; to HRP (sc-373899 HRP), 200 μ g/ml, for WB, IHC(P) and ELISA; to either phycoerythrin (sc-373899 PE), fluorescein (sc-373899 FITC), Alexa Fluor[®] 488 (sc-373899 AF488), Alexa Fluor[®] 546 (sc-373899 AF546), Alexa Fluor[®] 594 (sc-373899 AF594) or Alexa Fluor[®] 647 (sc-373899 AF647), 200 μ g/ml, for WB (RGB), IF, IHC(P) and FCM; and to either Alexa Fluor[®] 680 (sc-373899 AF680) or Alexa Fluor[®] 790 (sc-373899 AF790), 200 μ g/ml, for Near-Infrared (NIR) WB, IF and FCM.

Blocking peptide available for competition studies, sc-373899 P, (100 μ g peptide in 0.5 ml PBS containing < 0.1% sodium azide and 0.2% stabilizer protein).

Alexa Fluor[®] is a trademark of Molecular Probes, Inc., Oregon, USA

STORAGE

Store at 4° C, ****DO NOT FREEZE****. Stable for one year from the date of shipment. Non-hazardous. No MSDS required.

PROTOCOLS

See our web site at www.scbt.com for detailed protocols and support products.

APPLICATIONS

IRF-2BP1 (A-10) is recommended for detection of IRF-2BP1 of mouse, rat and human origin by Western Blotting (starting dilution 1:100, dilution range 1:100-1:1000), immunoprecipitation [1-2 μ g per 100-500 μ g of total protein (1 ml of cell lysate)], immunofluorescence (starting dilution 1:50, dilution range 1:50-1:500) and solid phase ELISA (starting dilution 1:30, dilution range 1:30-1:3000).

IRF-2BP1 (A-10) is also recommended for detection of IRF-2BP1 in additional species, including equine.

Suitable for use as control antibody for IRF-2BP1 siRNA (h): sc-97273, IRF-2BP1 siRNA (m): sc-146284, IRF-2BP1 shRNA Plasmid (h): sc-97273-SH, IRF-2BP1 shRNA Plasmid (m): sc-146284-SH, IRF-2BP1 shRNA (h) Lentiviral Particles: sc-97273-V and IRF-2BP1 shRNA (m) Lentiviral Particles: sc-146284-V.

IRF-2BP1 (A-10) X TransCruz antibody is recommended for Gel Supershift and ChIP applications.

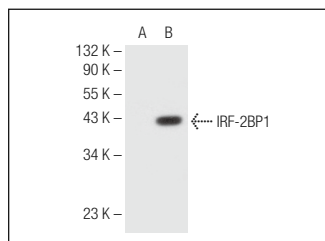
Molecular Weight of IRF-2BP1: 62 kDa.

Positive Controls: HeLa whole cell lysate: sc-2200 or IRF-2BP1 (h): 293T Lysate: sc-111584.

RECOMMENDED SUPPORT REAGENTS

To ensure optimal results, the following support reagents are recommended: 1) Western Blotting: use m-IgG κ BP-HRP: sc-516102 or m-IgG κ BP-HRP (Cruz Marker): sc-516102-CM (dilution range: 1:1000-1:10000), Cruz Marker[™] Molecular Weight Standards: sc-2035, UltraCruz[®] Blocking Reagent: sc-516214 and Western Blotting Luminol Reagent: sc-2048. 2) Immunoprecipitation: use Protein A/G PLUS-Agarose: sc-2003 (0.5 ml agarose/2.0 ml). 3) Immunofluorescence: use m-IgG κ BP-FITC: sc-516140 or m-IgG κ BP-PE: sc-516141 (dilution range: 1:50-1:200) with UltraCruz[®] Mounting Medium: sc-24941 or UltraCruz[®] Hard-set Mounting Medium: sc-359850.

DATA



IRF-2BP1 (A-10): sc-373899. Western blot analysis of IRF-2BP1 expression in non-transfected: sc-117752 (A) and human IRF-2BP1 transfected: sc-111584 (B) 293T whole cell lysates.

RESEARCH USE

For research use only, not for use in diagnostic procedures.