

Integrin α IIb (A-7): sc-373992

BACKGROUND

Integrins are heterodimers composed of noncovalently associated transmembrane α and β subunits. The 16 α and 8 β subunits heterodimerize to produce more than 20 different receptors. Most integrin receptors bind ligands that are components of the extracellular matrix, including Fibronectin, collagen and Vitronectin. Certain integrins can also bind to soluble ligands such as Fibrinogen, or to counterreceptors on adjacent cells such as the intracellular adhesion molecules (ICAMs), leading to aggregation of cells. Ligands serve to cross-link or cluster integrins by binding to adjacent integrin receptors; both receptor clustering and ligand occupancy are necessary for the activation of integrin-mediated responses. In addition to mediating cell adhesion and cytoskeletal organization, integrins function as signaling receptors. Signals transduced by integrins play a role in many biological processes, including cell growth, differentiation, migration and apoptosis.

REFERENCES

- Hynes, R.O. 1992. Integrins: versatility, modulation and signaling in cell adhesion. *Cell* 69: 11-25.
- Miyamoto, S., et al. 1995. Synergistic roles for receptor occupancy and aggregation in integrin transmembrane function. *Science* 267: 883-885.
- Clark, E.A., et al. 1995. Integrins and signal transduction pathways: the road taken. *Science* 268: 233-239.
- Sheppard, D. 1996. Epithelial integrins. *Bioessays* 18: 655-660.
- Juliano, R. 1996. Cooperation between soluble factors and integrin-mediated cell anchorage in the control of cell growth and differentiation. *Bioessays* 18: 911-917.
- Hantgan, R.R., et al. 2003. Ligand binding promotes the entropy-driven oligomerization of Integrin α IIb/ β 3. *J. Biol. Chem.* 278: 3417-3426.

CHROMOSOMAL LOCATION

Genetic locus: ITGA2B (human) mapping to 17q21.31; Itga2b (mouse) mapping to 11 E1.

SOURCE

Integrin α IIb (A-7) is a mouse monoclonal antibody raised against amino acids 847-1006 mapping near the C-terminus of Integrin α IIb of human origin.

PRODUCT

Each vial contains 200 μ g IgG₃ kappa light chain in 1.0 ml of PBS with < 0.1% sodium azide and 0.1% gelatin.

Blocking peptide available for competition studies, sc-373992 P, (100 μ g peptide in 0.5 ml PBS containing < 0.1% sodium azide and 0.2% stabilizer protein).

STORAGE

Store at 4° C, ****DO NOT FREEZE****. Stable for one year from the date of shipment. Non-hazardous. No MSDS required.

APPLICATIONS

Integrin α IIb (A-7) is recommended for detection of Integrin α IIb heavy and light chain of mouse, rat and human origin by Western Blotting (starting dilution 1:100, dilution range 1:100-1:1000), immunoprecipitation [1-2 μ g per 100-500 μ g of total protein (1 ml of cell lysate)], immunofluorescence (starting dilution 1:50, dilution range 1:50-1:500) and solid phase ELISA (starting dilution 1:30, dilution range 1:30-1:3000).

Suitable for use as control antibody for Integrin α IIb siRNA (h): sc-43554, Integrin α IIb siRNA (m): sc-45927, Integrin α IIb shRNA Plasmid (h): sc-43554-SH, Integrin α IIb shRNA Plasmid (m): sc-45927-SH, Integrin α IIb shRNA (h) Lentiviral Particles: sc-43554-V and Integrin α IIb shRNA (m) Lentiviral Particles: sc-45927-V.

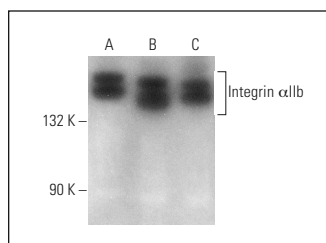
Molecular Weight of Integrin α IIb: 136 kDa.

Positive Controls: SUP-T1 whole cell lysate: sc-364796, Jurkat whole cell lysate: sc-2204 or TF-1 cell lysate: sc-2412.

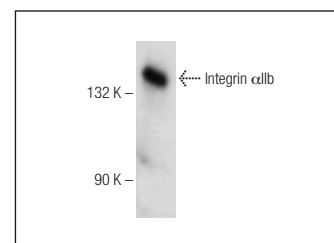
RECOMMENDED SUPPORT REAGENTS

To ensure optimal results, the following support reagents are recommended: 1) Western Blotting: use m-IgG κ BP-HRP: sc-516102 or m-IgG κ BP-HRP (Cruz Marker): sc-516102-CM (dilution range: 1:1000-1:10000), Cruz Marker™ Molecular Weight Standards: sc-2035, UltraCruz® Blocking Reagent: sc-516214 and Western Blotting Luminol Reagent: sc-2048. 2) Immunoprecipitation: use Protein A/G PLUS-Agarose: sc-2003 (0.5 ml agarose/2.0 ml). 3) Immunofluorescence: use m-IgG κ BP-FITC: sc-516140 or m-IgG κ BP-PE: sc-516141 (dilution range: 1:50-1:200) with UltraCruz® Mounting Medium: sc-24941 or UltraCruz® Hard-set Mounting Medium: sc-359850.

DATA



Integrin α IIb (A-7): sc-373992. Western blot analysis of Integrin α IIb expression in SUP-T1 (A), TF-1 (B) and Jurkat (C) whole cell lysates.



Integrin α IIb (A-7): sc-373992. Western blot analysis of Integrin α IIb expression in HEL 92.1.7 whole cell lysate.

RESEARCH USE

For research use only, not for use in diagnostic procedures.

CONJUGATES

See **Integrin α IIb (B-9): sc-365938** for Integrin α IIb antibody conjugates, including AC, HRP, FITC, PE, Alexa Fluor® 488 and Alexa Fluor® 647.