

CRMP-5 (F-4): sc-376921

BACKGROUND

Collapsin response mediator proteins (CRMPs), including CRMP-1 (DRP-1), CRMP-2 (DRP-2 or TOAD64), CRMP-3 (DRP-4), CRMP-4 (DRP-3) and CRMP-5 (DRP-5), mediate signal transduction after exposure of neural cells to the axon guidance molecule Semaphorin 3A (SEMA3A)/collapsin. CRMPs are present in the developing cerebral cortex and neocortical neurons and are responsive to SEMA3A. In the adult brain, the expression of CRMPs is dramatically down-regulated. However, they remain expressed in structures that retain their capacity for differentiation and plasticity. CRMP-5, which is phylogenetically divergent from the other four CRMPs, is expressed in the filopodia of growth cones as well as in adult central and peripheral neurons, including synapses. The paraneoplastic CRMP-5 autoantibody (CRMP-5-IgG) is also associated with small-cell lung carcinoma or thymoma.

REFERENCES

1. Thambisetty, M.R., et al. 2001. Paraneoplastic optic neuropathy and cerebellar ataxia with small cell carcinoma of the lung. *J. Neuroophthalmol.* 21: 164-167.
2. Yu, Z., et al. 2001. CRMP-5 neuronal autoantibody: marker of lung cancer and thymoma-related autoimmunity. *Ann. Neurol.* 49: 146-154.
3. Rosslenbroich, V., et al. 2003. Subcellular localization of collapsin response mediator proteins to lipid rafts. *Biochem. Biophys. Res. Commun.* 305: 392-399.
4. Cross, S.A., et al. 2003. Paraneoplastic autoimmune optic neuritis with retinitis defined by CRMP-5-IgG. *Ann. Neurol.* 54: 38-50.
5. Samii, A., et al. 2003. Paraneoplastic movement disorder in a patient with non-Hodgkin's lymphoma and CRMP-5 autoantibody. *Mov. Disord.* 18: 1556-1558.
6. Quach, T.T., et al. 2004. Involvement of collapsin response mediator proteins in the neurite extension induced by neurotrophins in dorsal root ganglion neurons. *Mol. Cell. Neurosci.* 25: 433-443.

CHROMOSOMAL LOCATION

Genetic locus: DPYSL5 (human) mapping to 2p23.3; Dpysl5 (mouse) mapping to 5 B1.

SOURCE

CRMP-5 (F-4) is a mouse monoclonal antibody specific for an epitope mapping between amino acids 509-534 at the C-terminus of CRMP-5 of human origin.

PRODUCT

Each vial contains 200 µg IgG_{2a} kappa light chain in 1.0 ml of PBS with < 0.1% sodium azide and 0.1% gelatin.

Blocking peptide available for competition studies, sc-376921 P, (100 µg peptide in 0.5 ml PBS containing < 0.1% sodium azide and 0.2% stabilizer protein).

RESEARCH USE

For research use only, not for use in diagnostic procedures.

APPLICATIONS

CRMP-5 (F-4) is recommended for detection of CRMP-5 of mouse, rat and human origin by Western Blotting (starting dilution 1:100, dilution range 1:100-1:1000), immunoprecipitation [1-2 µg per 100-500 µg of total protein (1 ml of cell lysate)], immunofluorescence (starting dilution 1:50, dilution range 1:50-1:500), immunohistochemistry (including paraffin-embedded sections) (starting dilution 1:50, dilution range 1:50-1:500) and solid phase ELISA (starting dilution 1:30, dilution range 1:30-1:3000).

CRMP-5 (F-4) is also recommended for detection of CRMP-5 in additional species, including equine, canine, bovine and porcine.

Suitable for use as control antibody for CRMP-5 siRNA (h): sc-60449, CRMP-5 siRNA (m): sc-60450, CRMP-5 shRNA Plasmid (h): sc-60449-SH, CRMP-5 shRNA Plasmid (m): sc-60450-SH, CRMP-5 shRNA (h) Lentiviral Particles: sc-60449-V and CRMP-5 shRNA (m) Lentiviral Particles: sc-60450-V.

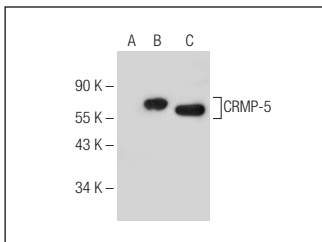
Molecular Weight of CRMP-5: 62 kDa.

Positive Controls: Y79 cell lysate: sc-2240, Y79 cell lysate: sc-2240, SK-N-SH cell lysate: sc-2410 or CRMP-5 (h): 293T Lysate: sc-176143.

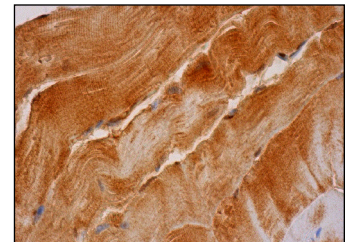
RECOMMENDED SUPPORT REAGENTS

To ensure optimal results, the following support reagents are recommended: 1) Western Blotting: use m-IgGκ BP-HRP: sc-516102 or m-IgGκ BP-HRP (Cruz Marker): sc-516102-CM (dilution range: 1:1000-1:10000), Cruz Marker™ Molecular Weight Standards: sc-2035, TBS Blotto A Blocking Reagent: sc-2333 and Western Blotting Luminol Reagent: sc-2048. 2) Immunoprecipitation: use Protein A/G PLUS-Agarose: sc-2003 (0.5 ml agarose/2.0 ml). 3) Immunofluorescence: use m-IgGκ BP-FITC: sc-516140 or m-IgGκ BP-PE: sc-516141 (dilution range: 1:50-1:200) with UltraCruz® Mounting Medium: sc-24941 or UltraCruz® Hard-set Mounting Medium: sc-359850.

DATA



CRMP-5 (F-4): sc-376921. Western blot analysis of CRMP-5 expression in non-transfected 293T: sc-117752 (A), human CRMP-5 transfected 293T: sc-117752 (B) and SK-N-SH (C) whole cell lysates.



CRMP-5 (F-4): sc-376921. Immunoperoxidase staining of formalin fixed, paraffin-embedded human skeletal muscle tissue showing cytoplasmic staining of myocytes.

STORAGE

Store at 4° C, **DO NOT FREEZE**. Stable for one year from the date of shipment. Non-hazardous. No MSDS required.

PROTOCOLS

See our web site at www.scbt.com for detailed protocols and support products.